

D

C

B

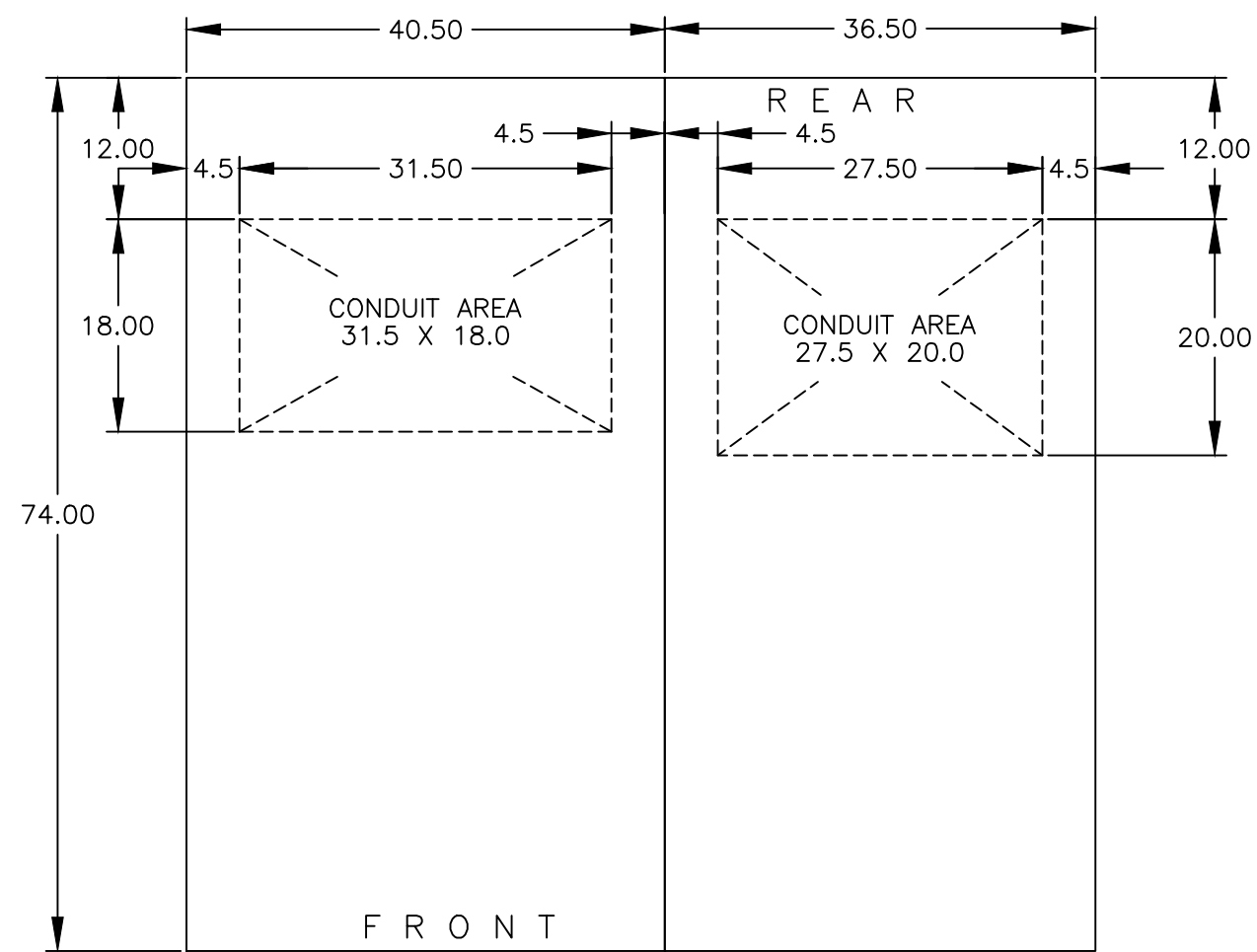
A

D

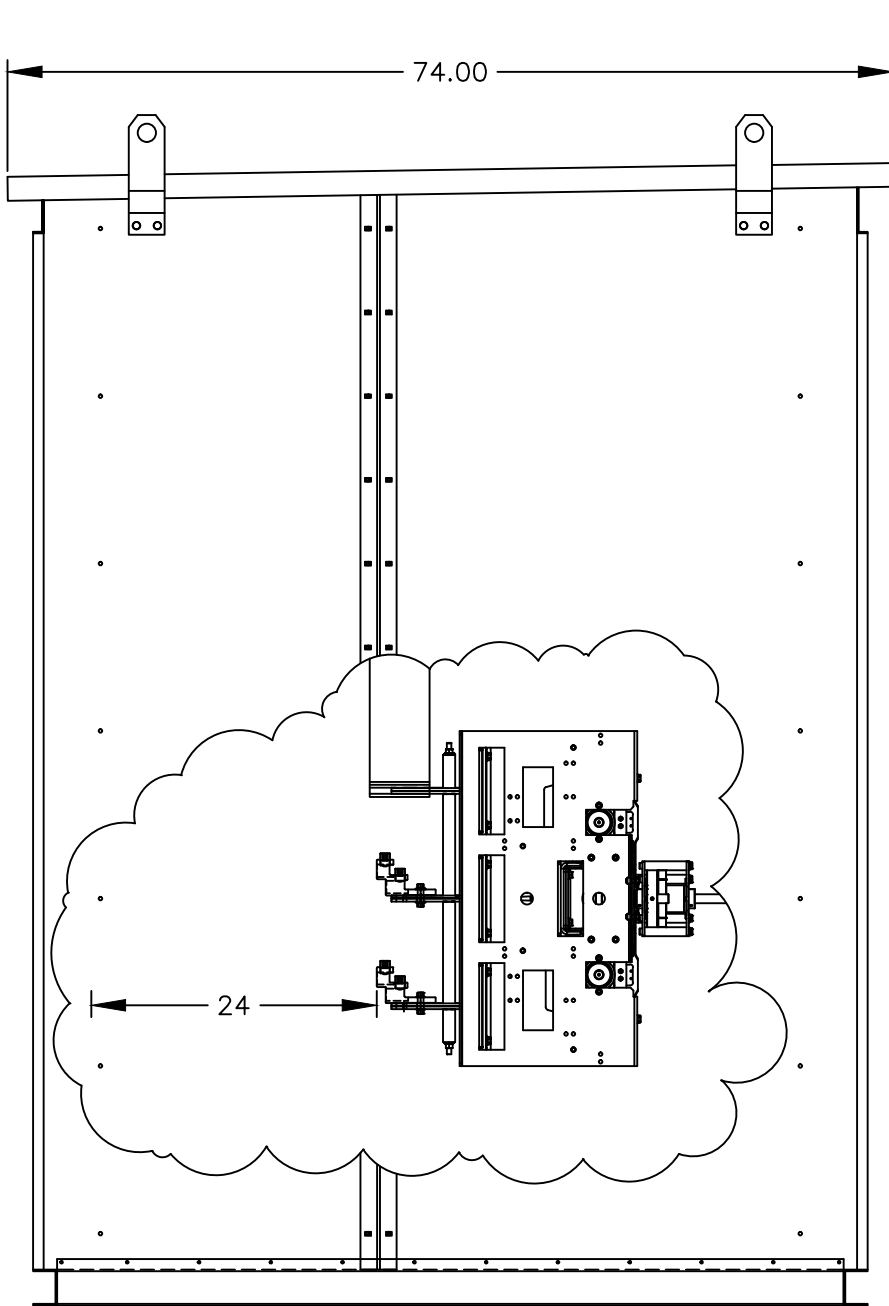
C

B

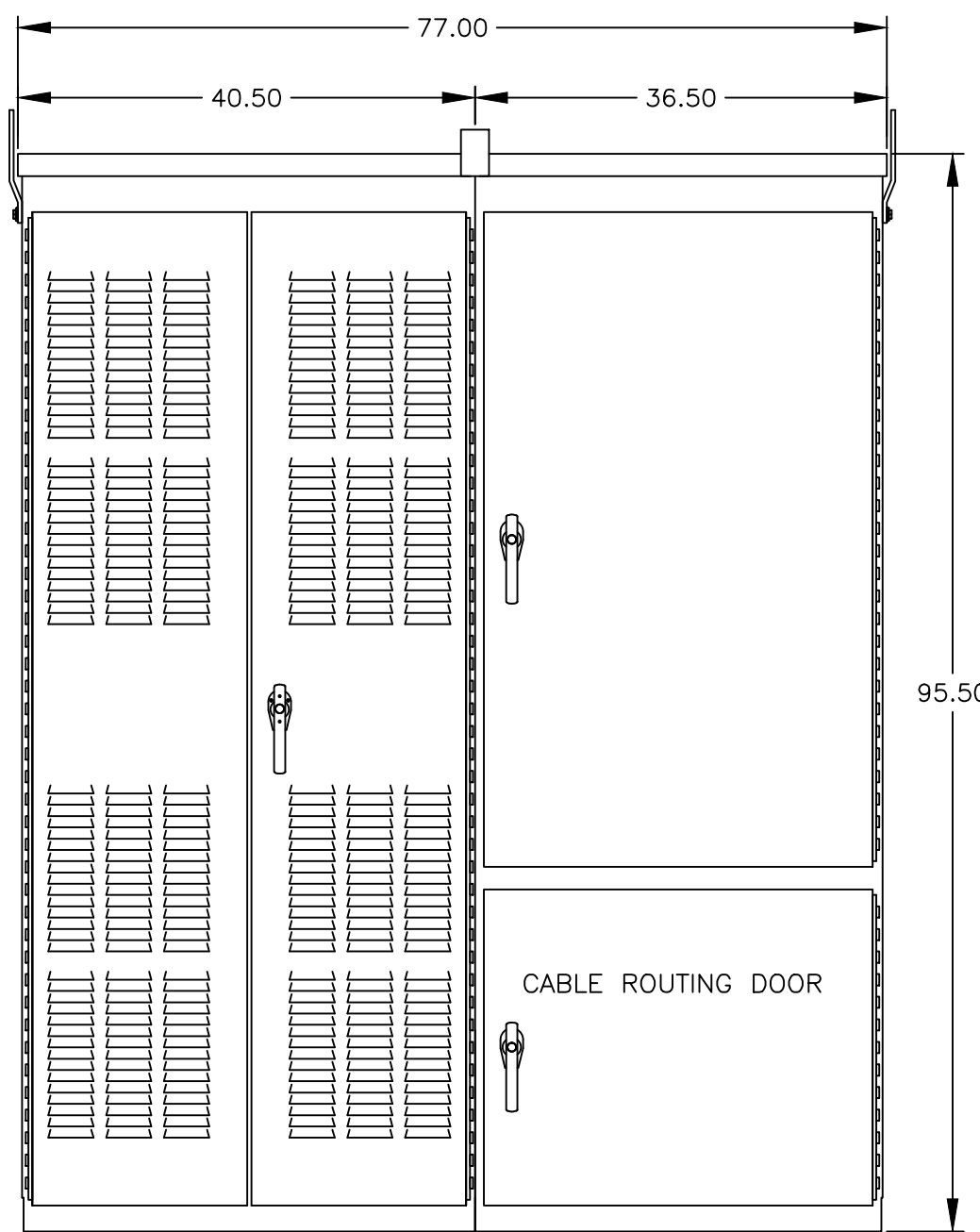
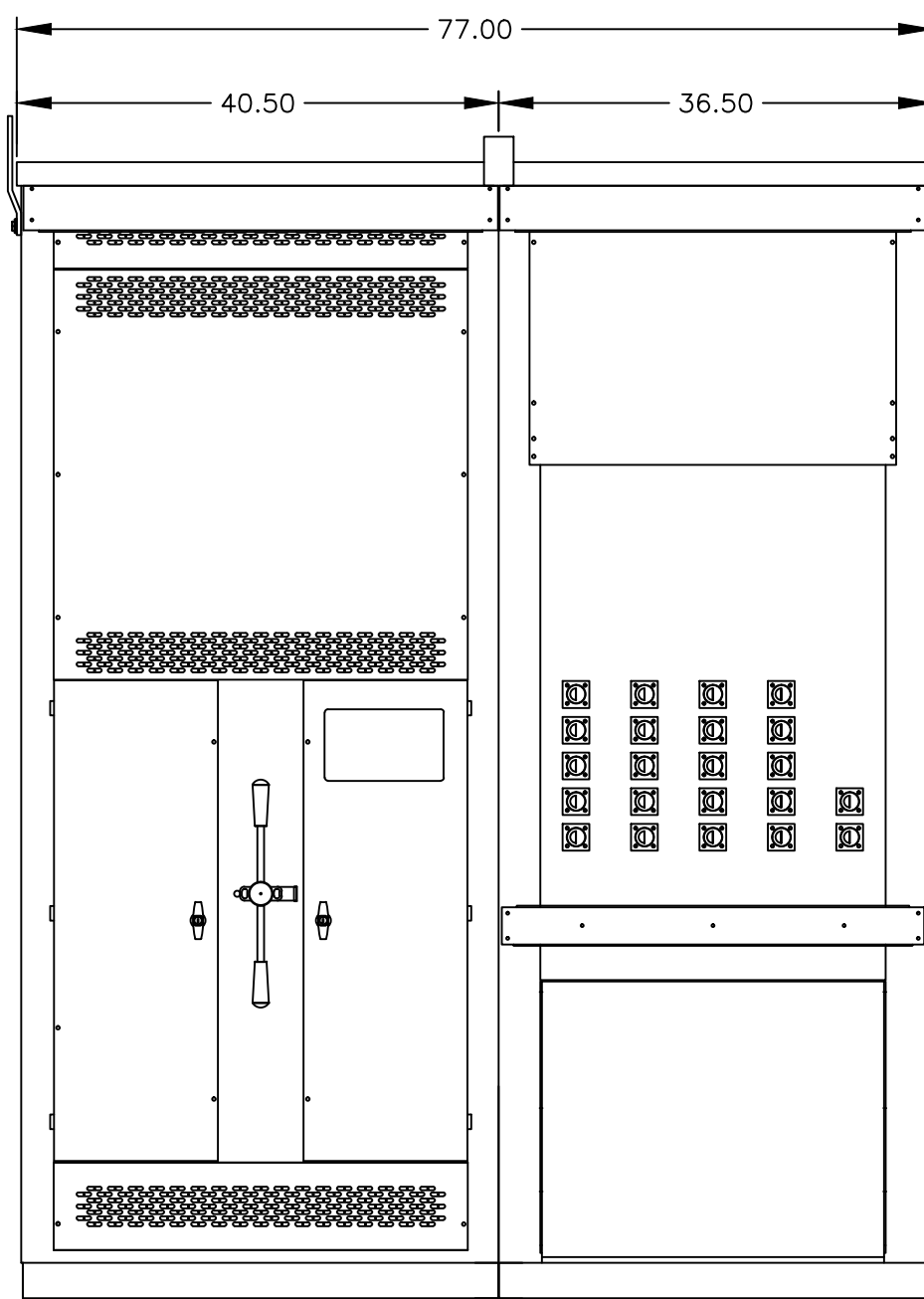
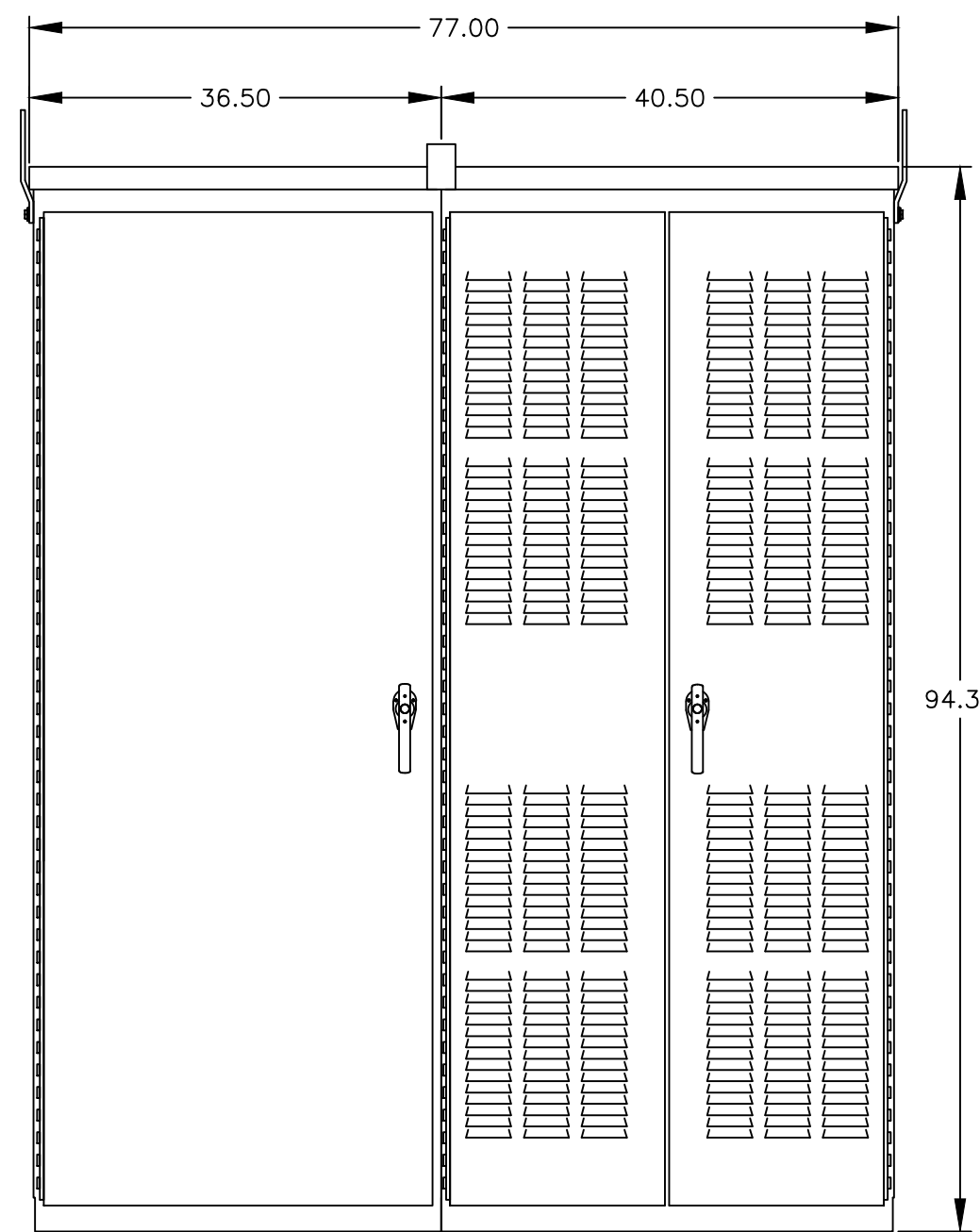
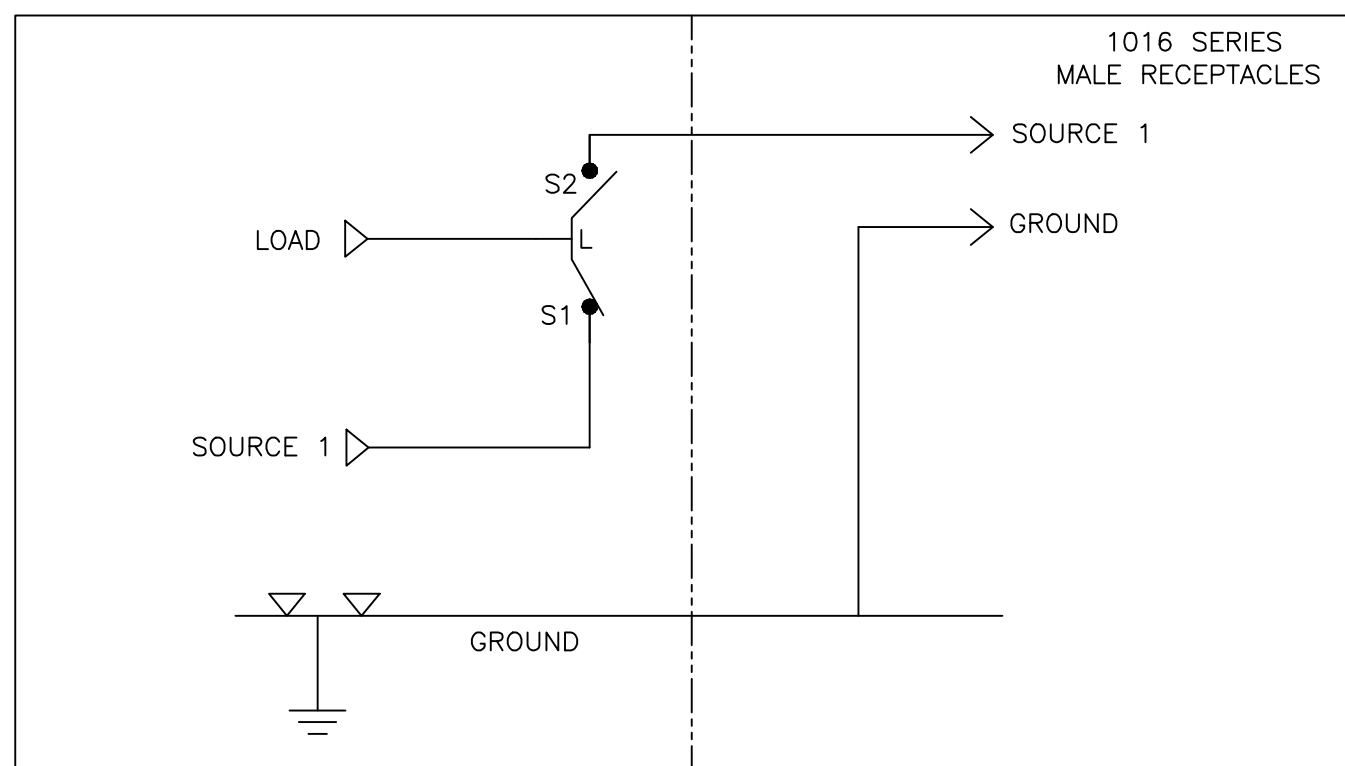
A



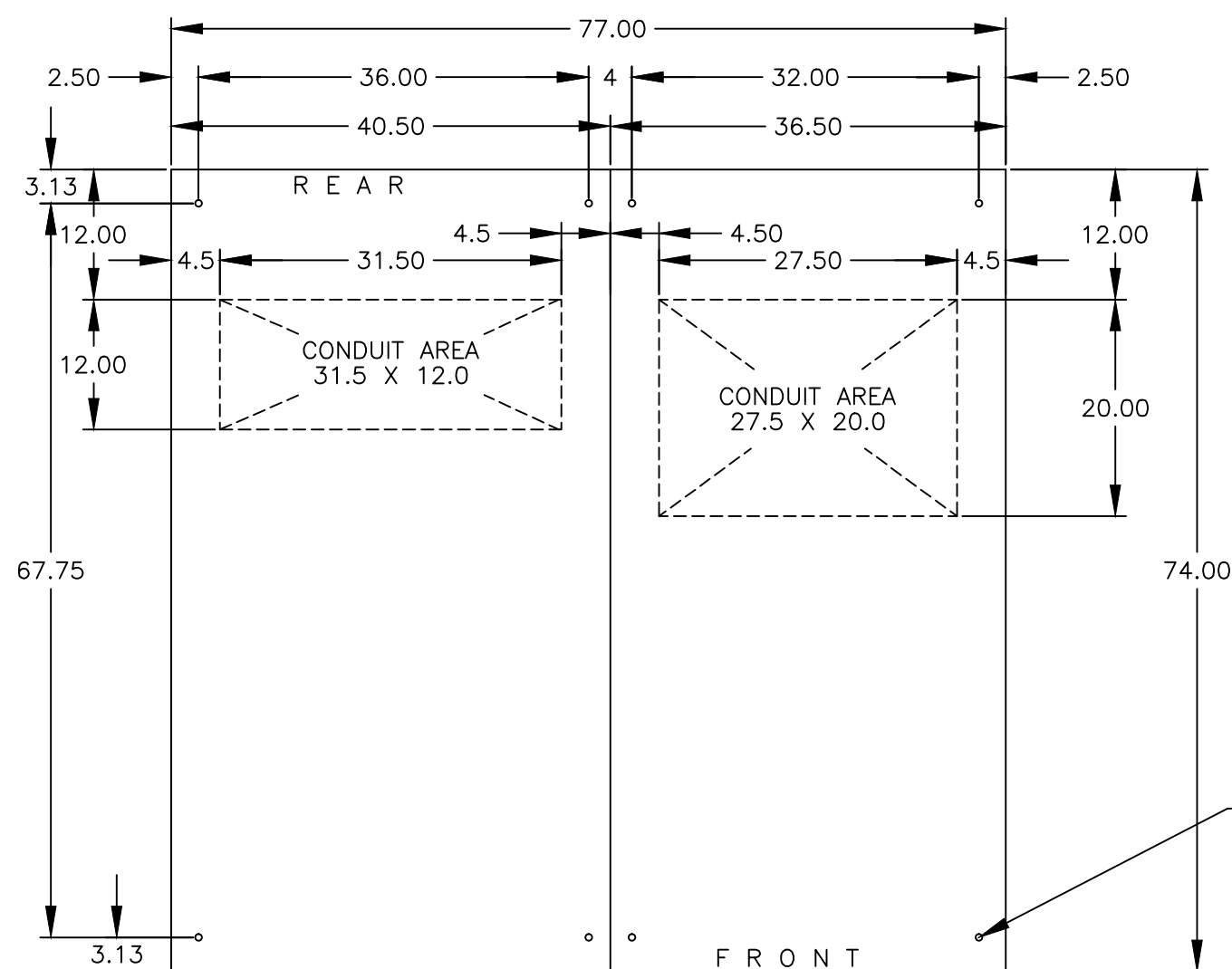
TOP VIEW



LEFT VIEW

SECTION 2  
SECTION 1  
FRONT VIEWSECTION 1  
SECTION 2  
FRONT VIEW WITHOUT EXTERIOR DOORSSECTION 1  
SECTION 2  
REAR VIEW

ONLINE



PLAN VIEW

BASE MOUNTING HOLES  
.625 DIA HOLES  
(4) PLACES PER SECTION

## GENERAL NOTES

- FLOOR MOUNTED ENCLOSURE.  
TYPE 3R CONSTRUCTED FROM CODE GAUGE STEEL.  
FINISH: TYPE 3R, ANSI 61 GRAY POLYESTER SEMI GLOSS ELECTROSTATIC POWDER.  
TYPE 3RX EXTERIOR CONSTRUCTED FROM CODE GAUGE STAINLESS STEEL.  
(R) EXTERIOR CONSTRUCTED FROM TYPE 304 STAINLESS STEEL.  
(S) EXTERIOR CONSTRUCTED FROM TYPE 316 STAINLESS STEEL.
- EXTERIOR DOORS HAVE PADLOCKABLE HANDLES WITH 3-POINT LATCH
- DESIGNED FOR FRONT & REAR ACCESS.
- RECOMMENDED CLEARANCES: FRONT: 38" REAR: 36"
- EXTERIOR VENTS ARE SUPPLIED WITH POLYESTER DUST FILTERS.
- LIFTING PLATES: SECTIONS ARE SUPPLIED WITH LIFTING PLATES. INSPECT PLATES FOR DAMAGE AND TORQUE BOLTS TO 45 FT LBS BEFORE USE. REFER TO ANSI/NEMA PB 2.1 FOR PROPER HANDLING OF EQUIPMENT. AFTER INSTALLATION OF SECTION, REMOVE LIFTING PLATES. REINSTALL BOLTS INTO EXTERIOR HOLES AND TORQUE TO APPROXIMATELY 20 FT LBS.
- DENOTES SHIPPING SPLIT. UNIT SHIPS IN 2 SECTIONS.

## SYSTEM NOTES

- SYSTEM RATING: 1000 AMPS, 1200 AMPS, 1600 AMPS, 2000 AMPS.  
SHORT CIRCUIT RATING: 1000A-1200A: 85,000 RMS SYM @ 480V.  
SHORT CIRCUIT RATING: 1600A-2000A: 100,000 RMS SYM @ 480V.  
THE EMERGENCY SOURCE MUST BE PROTECTED BY A REMOTE OVERCURRENT PROTECTION DEVICE AS LISTED ON THE MARKINGS ON THE TRANSFER SWITCH.
- ALL BUS IS SILVER-PLATED COPPER, BASED ON 1000A PER SQ. IN. DENSITY.
- GROUND: 20% RATED.
- NEUTRAL: 100% RATED.
- APPLICABLE LABEL(S): U.L. 891.

## TRANSFER SWITCH

- G FRAME AUTOMATIC TRANSFER SWITCH 1000A - 2000A.
- TRANSFER SWITCH RATING: 1000 AMPS, 1200 AMPS, 1600 AMPS, 2000 AMPS.  
SHORT CIRCUIT RATING WHEN PROTECTED BY A CIRCUIT BREAKER  
TIME RESPONSE, MAXIMUM 0.05 SECONDS:  
85,000 RMS SYM @ 480V (1000A - 1200A).  
100,000 RMS SYM @ 480V (1600A - 2000A).
- A FULL RATED NEUTRAL CONNECTION FOR EACH SOURCE AND THE LOAD IS OPTIONAL.  
WHEN PROVIDED IT IS IN ONE OF THE FOLLOWING FORMATS.  
A. SOLID NEUTRAL  
B. SWITCHED NEUTRAL POLE  
C. OVERLAPPING NEUTRAL POLE
- UL 1008

## TERMINATIONS 1000A-1200A

- SUPPLIED WITH MECHANICAL (SCREW TYPE) LUGS FOR CU/AL CABLE.  
SOURCE 1: (4) 1/0 - 600MCM PER PHASE & NEUTRAL & GROUND  
LOAD: (4) 1/0 - 600MCM PER PHASE & NEUTRAL & GROUND  
SOURCE 2: (5) 1016 SERIES SINGLE POLE MALE RECEPTACLES PER PHASE & NEUTRAL  
SOURCE 2: (2) 1016 SERIES SINGLE POLE MALE RECEPTACLES ON GROUND  
A. SUITABLE WIRE BENDING SPACE IS PROVIDED AS PER NEC.
- OPTIONAL LUGS MAY BE SUPPLIED.

## TERMINATIONS 1600A-2000A

- SUPPLIED WITH MECHANICAL (SCREW TYPE) LUGS FOR CU/AL CABLE.  
SOURCE 1: (6) 1/0 - 600MCM PER PHASE & NEUTRAL & GROUND  
LOAD: (6) 1/0 - 600MCM PER PHASE & NEUTRAL & GROUND  
SOURCE 2: (5) 1016 SERIES SINGLE POLE MALE RECEPTACLES PER PHASE & NEUTRAL  
SOURCE 2: (2) 1016 SERIES SINGLE POLE MALE RECEPTACLES ON GROUND  
A. SUITABLE WIRE BENDING SPACE IS PROVIDED AS PER NEC.
- OPTIONAL LUGS MAY BE SUPPLIED.

PROJECT NAME:		274353	NC	RN	8/30/18
OUTLINE		273545	NC	RN	7/17/18
GMTQ 1000A - 2000A		NEW ISSUE			
TYPE 3R/3RX 96 X 77 X 74		REV. TO SHEET	ECN NO.	BY	APP.
DRAWN BY		DATE	MANUFACTURING TOLERANCES TO BE IN ACCORDANCE WITH ASCO PROCEDURE MP-1-003. FOR PLASTIC PARTS SEE MP-1-005	ASSEM. REF. NO.	COMPUTER GENERATED DRAWING
CHECKED		DATE	PROPERTY OF ASCO POWER TECHNOLOGIES, L.P. USE PERMITTED FOR OUR WORK ONLY. ALL RIGHTS OF DESIGN OR INVENTION ARE RESERVED.	SCALE 1/16" = 1" SIZE DS	DWG. NO.
PROJECT APPROVAL		DATE	ASCOT	ASCOT	977106-005
FINAL APPROVAL		DATE	ASCOT	ASCOT	10F 1