

# ASCO SERIES 300 Manual Transfer Switch Solutions

When power fails, businesses suffer. For some organizations, a permanent generator is too costly. Instead, permanent means for quickly connecting a portable or temporary generator can make economic sense. ASCO SERIES 300 Manual Transfer Switching Solutions include the 300 SERIES MTS, 300 SERIES Quick Connect Panel, and 300 SERIES MTS with Integrated Quick Connects. This equipment provides innovative and flexible solutions for temporary backup power applications, including NEC® 700.3(F) requirements.

## Flexibility for Every Manual Backup Power Switching Application



The ASCO SERIES 300 **Manual Transfer Switch** is the perfect load transfer solution for commercial and municipal applications:

- Three-position center-off switch is robust and easy-to-use
- Leverages ASCO's reliable, field-proven, transfer switching technology
- Modular, compact design is easy to install and maintain
- Designed to handle the demands of motors and high inrush currents
- Service Entrance configurations available



The ASCO SERIES 300 **Quick Connect Power Panel** provides reliable, convenient, and economical connection for a standby generator:

- Listed to UL 1008 Transfer Switch Accessory standard
- Utilizes standard Cam-Lok™ receptacles for quick connection
- Standard Type 3R construction is weatherproof with or without cables
- Available with stainless steel enclosure for corrosive environments
- Lockable doors prevent unauthorized entry



The ASCO SERIES 300 **Manual Transfer Switch with Integrated Quick Connects** provides a total temporary power connection and transfer solution:

- Enables connection and control of a secondary power source
- Provides a complete UL 1008-listed solution in a single unit

**ASCO**®

## Applications



**Healthcare**

Healthcare facilities require uninterrupted power to mitigate risks and ensure patients receive the best possible care. When only a single permanent generator provides backup power, the NEC® now requires a means for connecting a portable generator. ASCO's SERIES 300 MTS can be used to switch loads to a temporary power source when permanent generators are off-line.



**Telecom**

Telecommunications facilities must provide a high level of service and dependability. Lost power could disrupt critical services to customers and businesses. The ASCO SERIES 300 MTS provides a way to keep power on and customers online.



**Municipal**

Communities rely on city and county governments for critical emergency services. A power interruption can hinder emergency response. The ASCO SERIES 300 Manual Transfer Switch enables connection to backup power for critical services when they are needed most. It also provides also cost-effective backup solution for water and wastewater pump stations.



**Commercial, Retail, Light Industrial**

Power interruptions can profoundly impact the revenues of retail, commercial, and industrial businesses. Outages interrupt shopping, disrupt operations, and create safety problems. They can result in lost transaction data, lost account information, and damaged data equipment. Loss of refrigeration can ruin inventory. The ASCO SERIES 300 Manual Transfer Switch provides a cost-efficient backup power switching solution for small businesses.



## SERIES 300 MTS Features:

Every ASCO SERIES 300 Manual Transfer Switch provides the following capabilities and features:

- Transfer Switches listed to UL 1008 standard
- Service Entrance configurations listed to UL 891
- Available from 150 to 3000 Amps, up to 600VAC, single or 3-phase
- Dual-operator configuration provides 3-position switching with center-off position
  - Switch design prevents simultaneous connection to two power sources
  - Pad-lockable in any position
- Leverages ASCO's field-proven transfer switching technology
- Designed to handle the demands of motors and high inrush currents
- Available with solid neutral termination or switched neutral pole
- Available stainless steel enclosure for use in corrosive environments
- When equipped with a connecting means, meets NFPA 110 standards for Emergency and Standby Power Systems and NEC® Article 700.3(F)
- Auxiliary contacts indicate switch position - two contacts for Normal and two for Emergency
  - LED indicators and Form C contacts for switch position and source availability
  - Phase rotation monitoring to ensure correct connection of temporary source
  - Two-wire engine start switch
- IO Module for building management system integration
- Restriction of Hazardous Substances (RoHS) compliant



## SERIES 300 Quick Connect Panel Features:

Whether it's a stand-alone panel or integrated into an MTS, ASCO Quick Connect Panels offer the following features:

- Input panels listed to UL 1008 as a transfer switch accessory
- Output panels are listed to UL 891 for switchboards
- 400 to 4000 Amp models rated up to 600 Volts
- Convenient, economical, and reliable connection of emergency or alternate power to a transfer switch
- Standard Type 3R weatherproof construction with or without cables connected
- Quick Connect Panels are constructed of aluminum or stainless steel
- Utilizes standard Cam-Lok receptacle for quick connection
- Lockable doors to prevent unauthorized entry



## SERIES 300 MTS with Integrated Quick Connections

Every ASCO SERIES 300 Manual Transfer Switch provides the following capabilities and features:

- Standard Type 3R cabinet is weatherproof with or without temporary power cables connected
- Utilizes 16 Series Cam-Lok connectors



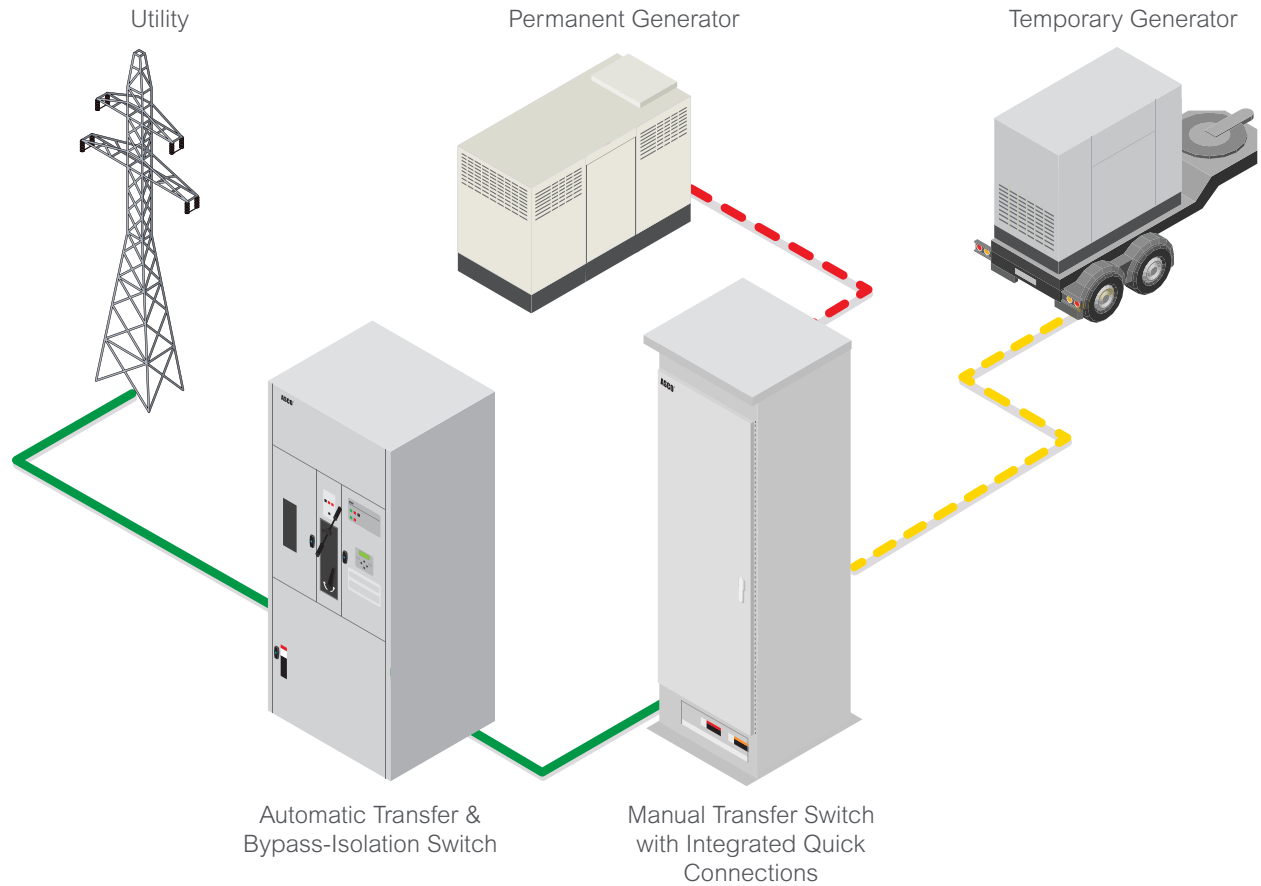
## Simple and Effective 3-Position Switch



Note: Handle shown above for 150 - 1200A versions only.

## The Perfect Solution for NEC® 700.3 Requirements

At facilities where backup power must be available even when servicing a facility's sole generator, National Electrical Code® Article 700.3(F) requires that a permanent switching means be provided to connect an interim source of secondary power. For facilities without a permanent backup generator, an MTS and a connecting means can facilitate the connection of a temporary or portable generator when needed, without the cost of a permanent engine-generator.



### MTS Ordering Information

J	+	03MTS	+	A	+	3	+	0600	+	N	+	0X	+	M
Frame		Product		Neutral Code		Phase Poles		Amperes		Voltage Code		Group Code		Enclosure
J = 150 - 600A H = 800 - 1200A G = 1600 - 3000A		03MTS <sup>2</sup> - Manual Transfer Switch		A - Solid Neutral		2 3		0150 0200 0230 <sup>1</sup> 0260 <sup>1</sup> 0400 0600 0800 1000 1200 1600 2000 2600 3000		A - 115 B - 120 C - 208 D - 220 E - 230 F - 240 H - 380 J - 400 K - 415 L - 440 M - 460 N - 480 P - 550 Q - 575 R - 600		00 - No Accessory 0X - Accessory 0Z - Custom Accessory		C - Type 1 M - Type 3R Secure N - Type 4 Secure S - Type 3RX Secure (316) SS V - Type 4X Secure (316) SS
		03MUS - Service Entrance Manual Transfer Switch		B - Switched Neutral										
		03MTQ <sup>3</sup> - Manual Transfer Switch with Quick Connects												
		03MUQ <sup>3</sup> - Service Entrance Manual Transfer Switch with Quick Connects												

#### Notes:

1. For Service Entrance switches rating is 225, and 250 amperes respectively.
2. Voltage code is not required for 03MTS without 170 accessory.
3. 03MTQ and 03MUQ transfer switches only available up to 1200 amps.

## ASCO 170 MTS User Interface/Annunciation Accessories

170	B	P	1
Accessory Description	User Interface/Controls	Phase Rotation	IO Module
All 170 Accessories Include LEDs and Contacts For: <ul style="list-style-type: none"> <li>• Source 1 Available</li> <li>• Source 2 Available</li> <li>• Connected to Source 1</li> <li>• Connected to Source 2</li> <li>• Disconnected Position</li> </ul>	B – Base (Source Indication Only. No engine start switch or common alarm) E – Maintained Engine Start Switch/Output With Common Alarm Input/LED/Contact K – Keyed Maintained Engine Start Switch/Output with Common Alarm Input/LED/Contact	P = Phase Rotation Monitor (LED) Blank = none	1 = IO Module Blank = None

## Additional ASCO MTS Accessories

Accessories	Description
44A	Strip heater with thermostat prevent condensation and ice formation of water. External 120V power source required
44G	Strip heater with thermostat wired to load terminals
73	Surge Suppressor Rated 65kA

## Quick Connect Panel Information

Rating	Standard Connection Type	Mounting	Dimensions	Shipping Weight (lbs)	Internal Connection
400A	Cam-Lok (1 row)	Wall Mount	24"w x 32"h x 11"d	85	Dual 2 AWG - 600 MCM Lugs
800A	Cam-Lok (2 rows)	Wall Mount	24"w x 32"h x 11"d	95	Dual 2 AWG - 600 MCM Lugs
1200A	Cam-Lok (3 rows)	Floor Mount	35"w x 56"h x 28"d	475	Copper Bus with ½" holes
1600A	Cam-Lok (4 rows)	Floor Mount	35"w x 56"h x 28"d	495	Copper Bus with ½" holes
2000A	Cam-Lok (5 - 9 rows)	Pad Mount	31"w x 39"h x 50"d	205	Single 2 AWG - 600 MCM Lugs
2400A - 4000A	Cam-Lok (6 - 10 rows)	Pad Mount	48"w x 39"h x 50"d	Varies based on Amperage	Single 2 AWG - 600 MCM Lugs

## Catalog Information

3QC	N	C	A	A	3	0400	F	00	F
SERIES	Input/Output	Connector Type	Ground <sup>3</sup>	Neutral	Poles/Phase <sup>4</sup>	Amps	Volts/Color Code	Accessories	Enclosure
3QC	N = Input  U <sup>1</sup> = Output	C = Cam-Lok	A = 100%  N = minimum of 25% grounding ampacity	0 = none  A = 100% Rated Neutral	2 or 3	0400 0800 1200 1600 2000 <sup>2</sup> 2400 <sup>2</sup> 2800 <sup>2</sup> 3200 <sup>2</sup> 4000 <sup>2</sup>	F ≤ 240V Black, Red, Blue  N ≤ 480V Brown, Orange, Yellow  R ≤ 600V Black, Black, Black	00 = None	F = Type 3R  S = 316 Stainless Steel Type 3R

### Notes:

1. Output Panels contain female connectors with flip covers.
2. Provisions for Trap Key interlock, Phase rotation monitor, 2-wire auto start and Tamper Resistant door are standard features available on 2000A-4000A Pad Mount Quick Connect Panels.
3. 100% Rated Ground standard on 400A-1600A units. Minimum of 25% rated ground on 2000A and above.
4. 2-Pole only available for 240V up to 1600A.