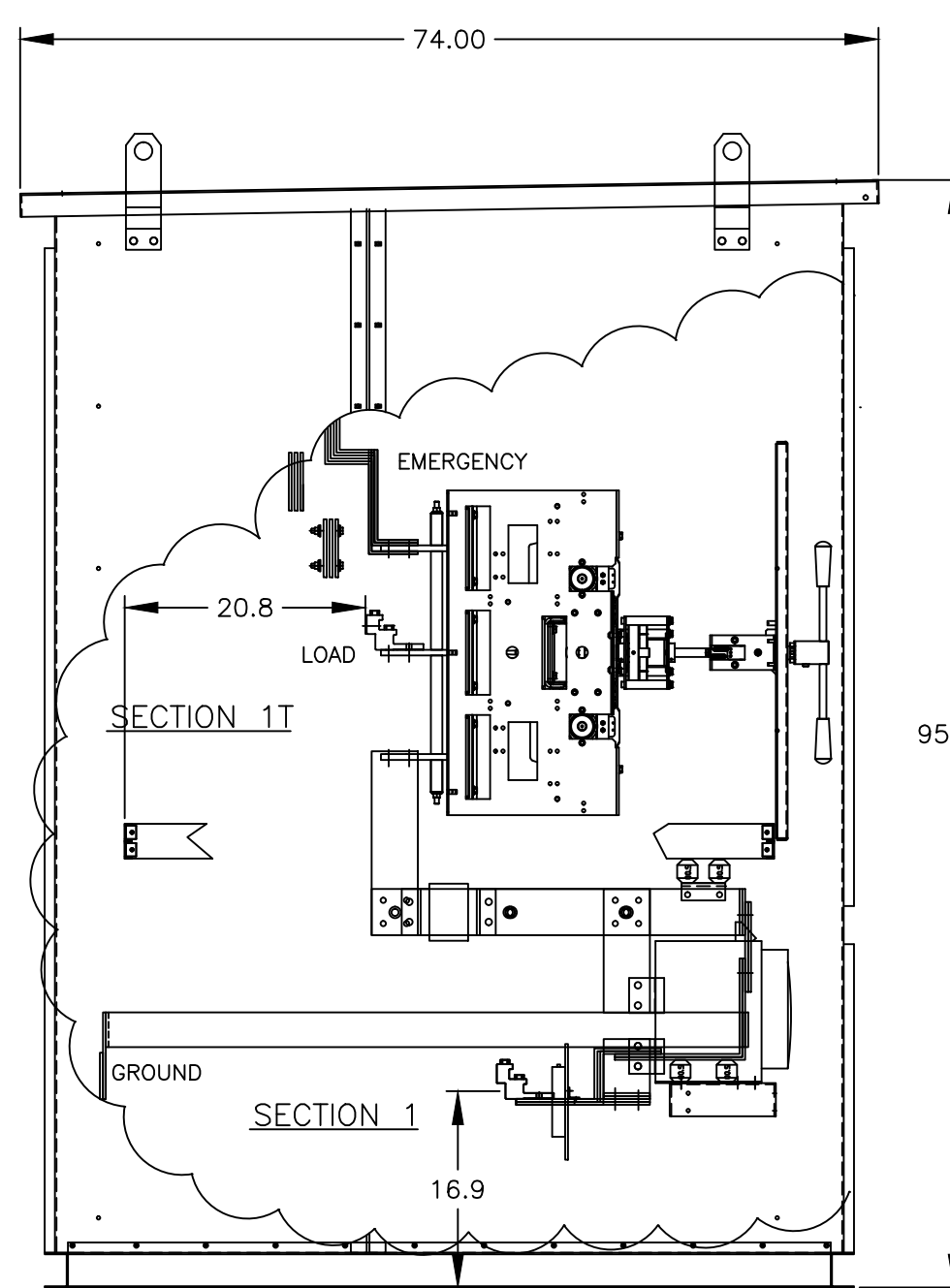
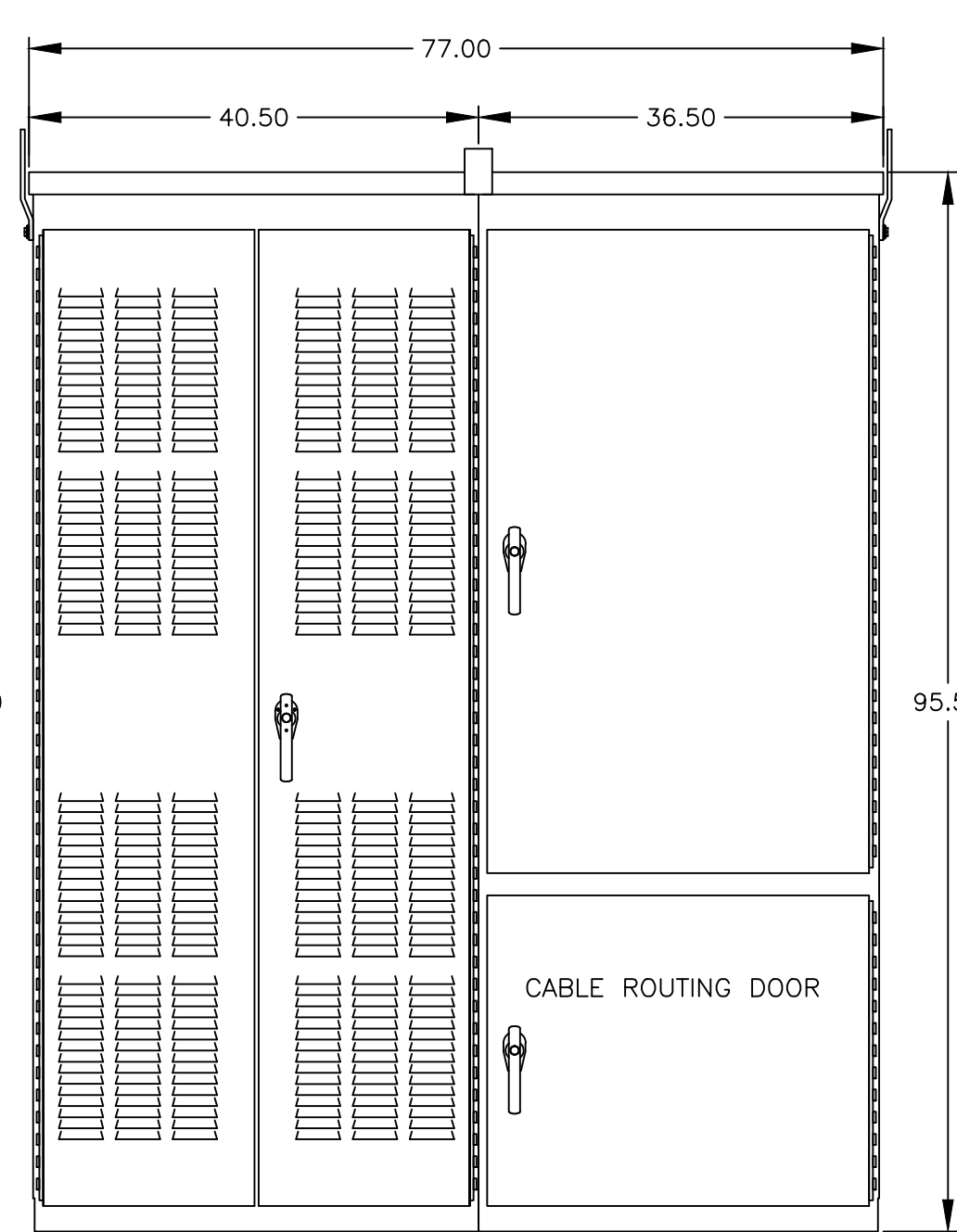


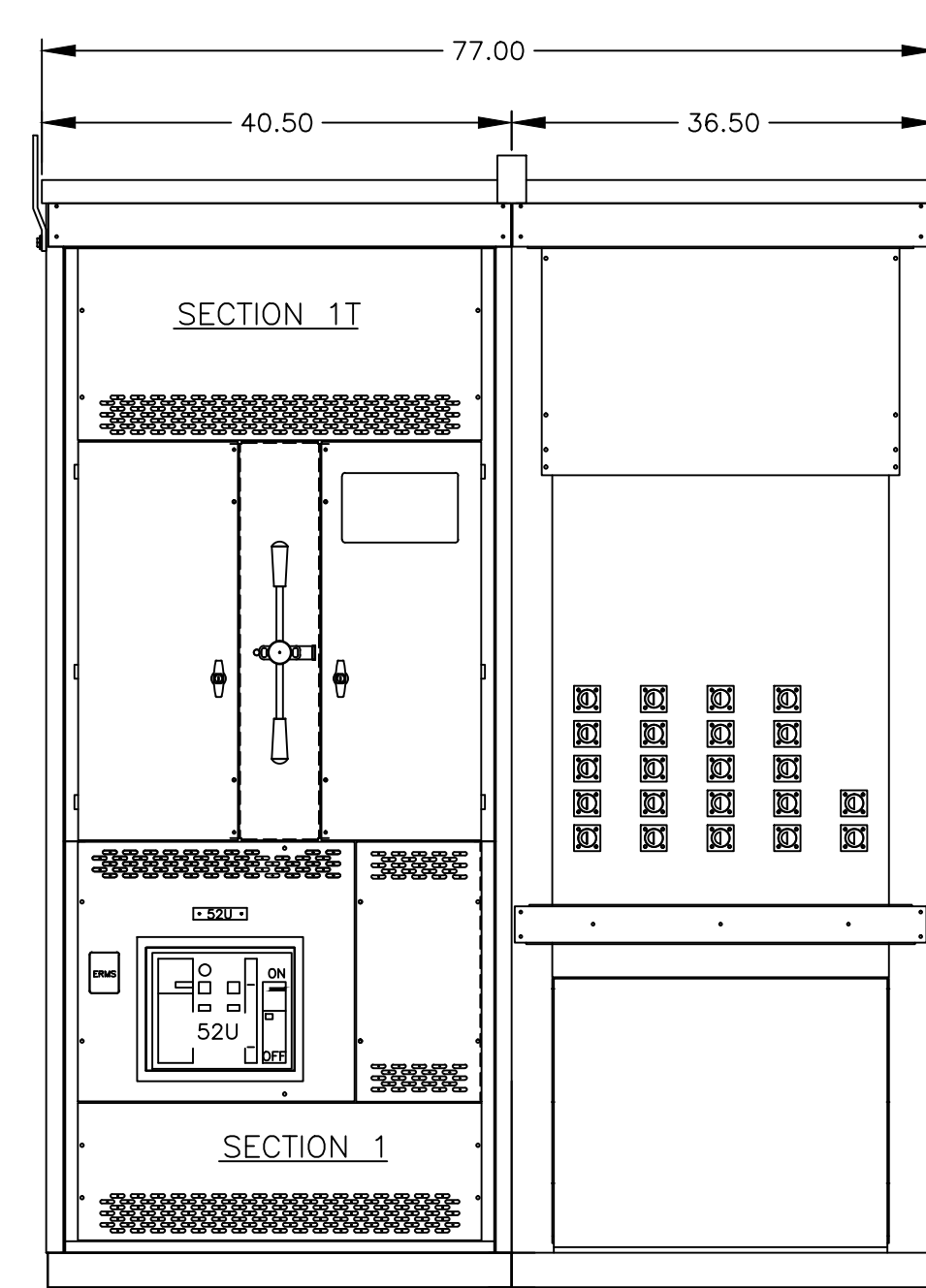
TOP VIEW



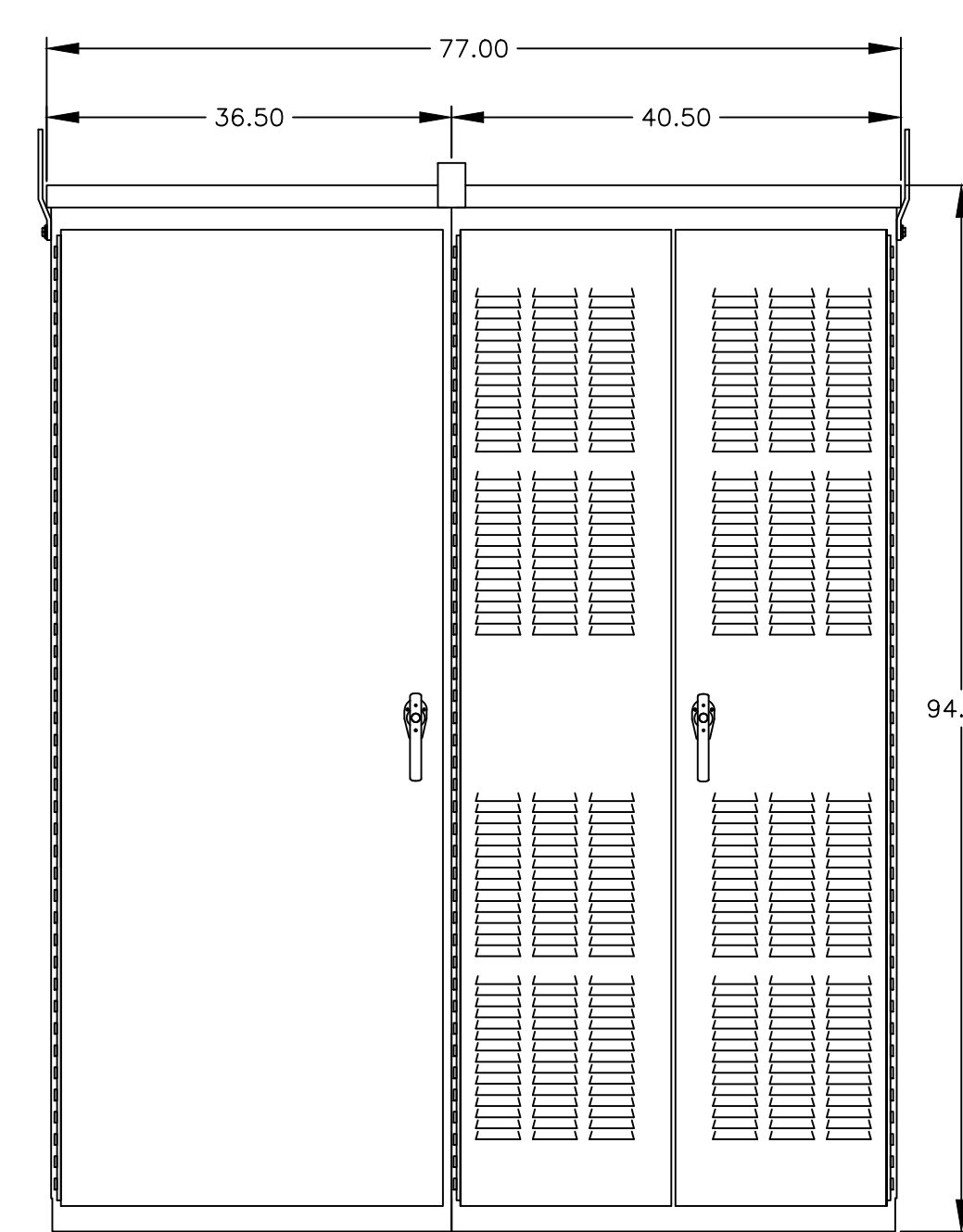
LEFT VIEW



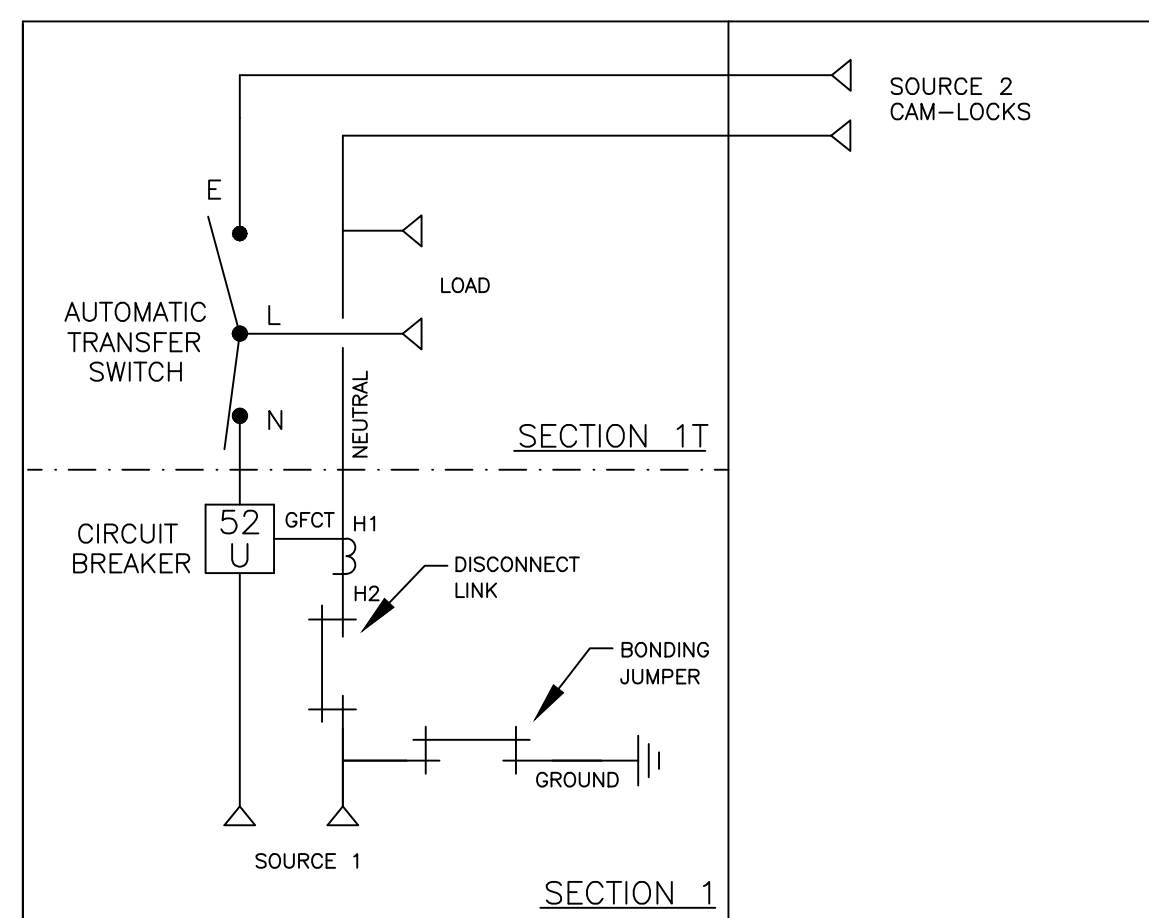
FRONT VIEW



FRONT VIEW WITHOUT EXTERIOR DOORS

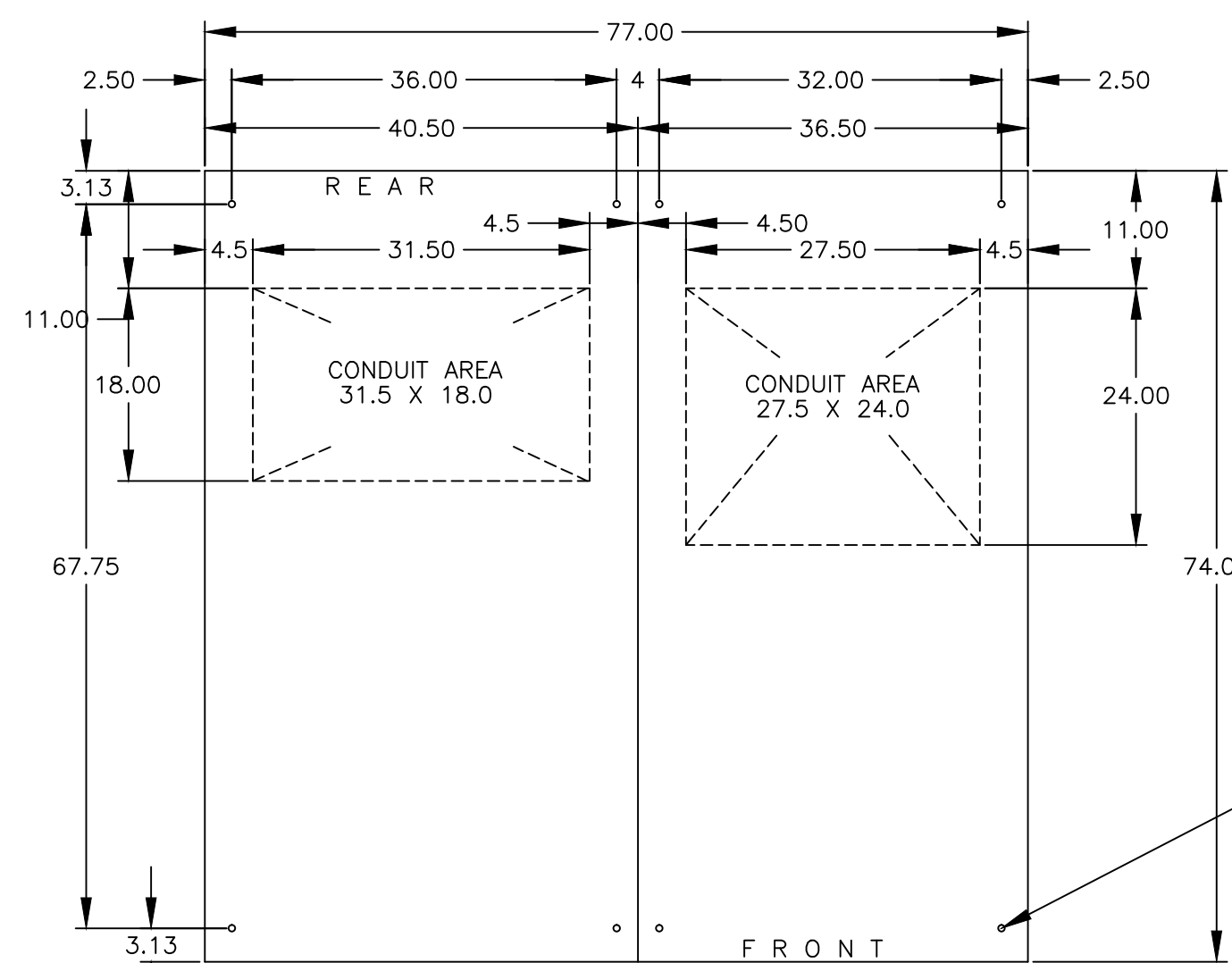


REAR VIEW



SECTION 1 SECTION 2  
(WITH SOLID NEUTRAL)

ONLINE



PLAN VIEW

GENERAL NOTES

- FLOOR MOUNTED ENCLOSURE.  
TYPE 3R CONSTRUCTED FROM CODE GAUGE STEEL.  
FINISH: TYPE 3R, ANSI 61 GRAY POLYESTER SEMI GLOSS ELECTROSTATIC POWDER.  
TYPE 3RX EXTERIOR CONSTRUCTED FROM CODE GAUGE STAINLESS STEEL.  
(R) EXTERIOR CONSTRUCTED FROM TYPE 304 STAINLESS STEEL.  
(S) EXTERIOR CONSTRUCTED FROM TYPE 316 STAINLESS STEEL.
- EXTERIOR DOORS HAVE PADLOCKABLE HANDLES WITH 3-POINT LATCH
- DESIGNED FOR FRONT & REAR ACCESS.
- RECOMMENDED CLEARANCES: FRONT: 38" REAR: 36"
- EXTERIOR VENTS ARE SUPPLIED WITH POLYESTER DUST FILTERS.
- LIFTING PLATES: SECTIONS ARE SUPPLIED WITH LIFTING PLATES. INSPECT PLATES FOR DAMAGE AND TORQUE BOLTS TO 45 FT LBS BEFORE USE. REFER TO ANSI/NEMA PB 2.1 FOR PROPER HANDLING OF EQUIPMENT. AFTER INSTALLATION OF SECTION, REMOVE LIFTING PLATES. REINSTALL BOLTS INTO EXTERIOR HOLES AND TORQUE TO APPROXIMATELY 20 FT LBS.
- DENOTES SHIPPING SPLIT. UNIT SHIPS IN 2 SECTIONS.

SYSTEM NOTES

- SYSTEM RATING: 1000 AMPS, 1200 AMPS, 1600 AMPS, 2000 AMPS.  
SHORT CIRCUIT RATING: 1000A-1200A: 85,000 RMS SYM @ 480V.  
SHORT CIRCUIT RATING: 1600A-2000A: 100,000 RMS SYM @ 480V.  
THE EMERGENCY SOURCE MUST BE PROTECTED BY A REMOTE OVERCURRENT PROTECTION DEVICE AS LISTED ON THE MARKINGS ON THE TRANSFER SWITCH.
- ALL BUS IS SILVER-PLATED COPPER, BASED ON 1000A PER SQ. IN. DENSITY.
- GROUND: 20% RATED.
- NEUTRAL: 100% RATED.
- APPLICABLE LABEL(S): U.L. 891.

TRANSFER SWITCH

- G FRAME AUTOMATIC TRANSFER SWITCH 1000A - 2000A.
- TRANSFER SWITCH RATING: 1000 AMPS, 1200 AMPS, 1600 AMPS, 2000 AMPS.  
SHORT CIRCUIT RATING WHEN PROTECTED BY A CIRCUIT BREAKER  
TIME RESPONSE, MAXIMUM 0.05 SECONDS:  
85,000 RMS SYM @ 480V (1000A - 1200A).  
100,000 RMS SYM @ 480V (1600A - 2000A).
- A FULL RATED NEUTRAL CONNECTION FOR EACH SOURCE AND THE LOAD IS OPTIONAL.  
WHEN PROVIDED IT IS IN ONE OF THE FOLLOWING FORMATS.  
A. SOLID NEUTRAL  
B. SWITCHED NEUTRAL POLE  
C. OVERLAPPING NEUTRAL POLE
- UL 1008

TERMINATIONS 1000A-1200A

- SUPPLIED WITH MECHANICAL (SCREW TYPE) LUGS FOR CU/AL CABLE.  
SOURCE 1: (4) 1/0 - 600MCM PER PHASE & NEUTRAL & GROUND  
LOAD: (4) 1/0 - 600MCM PER PHASE & NEUTRAL & GROUND  
SOURCE 2: (5) 1016 SERIES SINGLE POLE MALE RECEPTACLES PER PHASE & NEUTRAL  
SOURCE 2: (2) 1016 SERIES SINGLE POLE MALE RECEPTACLES ON GROUND  
A. SUITABLE WIRE BENDING SPACE IS PROVIDED AS PER NEC.
- OPTIONAL LUGS MAY BE SUPPLIED.

TERMINATIONS 1600A-2000A

- SUPPLIED WITH MECHANICAL (SCREW TYPE) LUGS FOR CU/AL CABLE.  
SOURCE 1: (6) 1/0 - 600MCM PER PHASE & NEUTRAL & GROUND  
LOAD: (6) 1/0 - 600MCM PER PHASE & NEUTRAL & GROUND  
SOURCE 2: (5) 1016 SERIES SINGLE POLE MALE RECEPTACLES PER PHASE & NEUTRAL  
SOURCE 2: (2) 1016 SERIES SINGLE POLE MALE RECEPTACLES ON GROUND  
A. SUITABLE WIRE BENDING SPACE IS PROVIDED AS PER NEC.
- OPTIONAL LUGS MAY BE SUPPLIED.

EMERGENCY BREAKER: ITEM 52U

- SQUARE "D" 100% RATED, TYPE 'NW', 2000AF/2000AT OR 2000AF/1600AT, 2000AF/1200AT, 2000AF/1000AT STATIONARY MOUNTED MANUALLY OPERATED. WITH LONG DELAY, SHORT DELAY AND INSTANTANEOUS SETTINGS AND GROUND FAULT SETTINGS
- OPTIONAL ENERGY REDUCTION MAINTENANCE SETTING (ERMS) SYSTEM MAY BE SUPPLIED.
- U.L. 489

PROJECT NAME:		277620	LY	3/11/19
REV. TO SHEET	ECN NO.	BY	APP.	DATE
OUTLINE		MOUNTING		
GMUQ 1000A - 2000A				
TYPE 3R/3RX 96 X 77 X 74				
BY	DATE	MANUFACTURING TOLERANCES TO BE IN ACCORDANCE WITH ASCO PROCEDURE MP-1-003. FOR PLASTIC PARTS SEE MP-1-005		
LY	3/11/19	ASSEM. REF. NO.	COMPUTER GENERATED DRAWING	
CHECKED		SCALE 1/16" = 1" SIZE DS		
PROJECT APPROVAL		PROPERTY OF ASCO POWER TECHNOLOGIES. USE PERMITTED FOR OUR WORK ONLY. ALL RIGHTS OF DESIGN OR INVENTION ARE RESERVED.		
FINAL APPROVAL		DWG. NO. 977108-003		
DRAWING REV.		ECN NO. 277620		
		SHEET 1 OF 1		