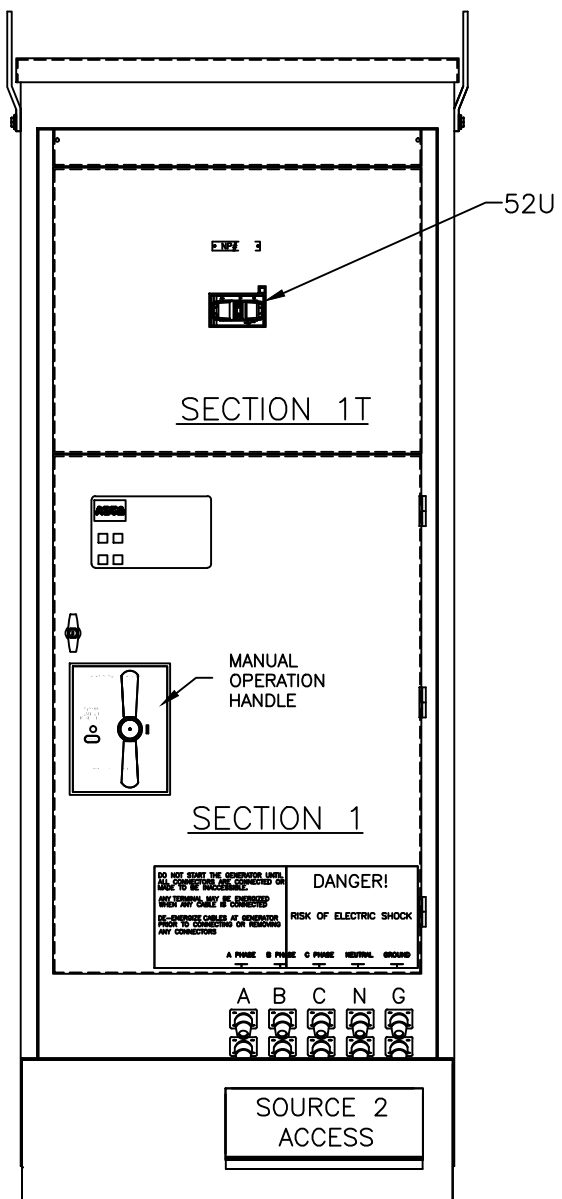
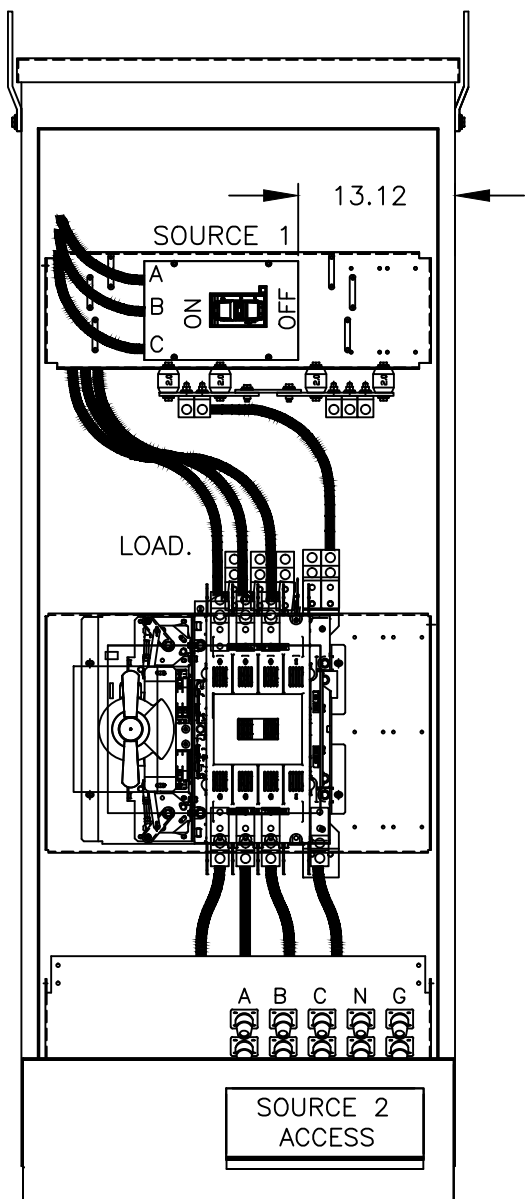


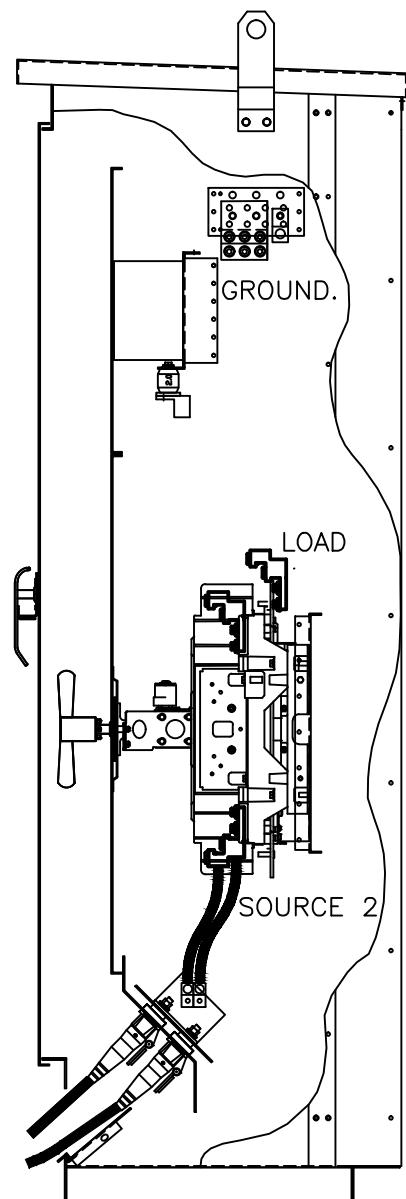
TOP VIEW



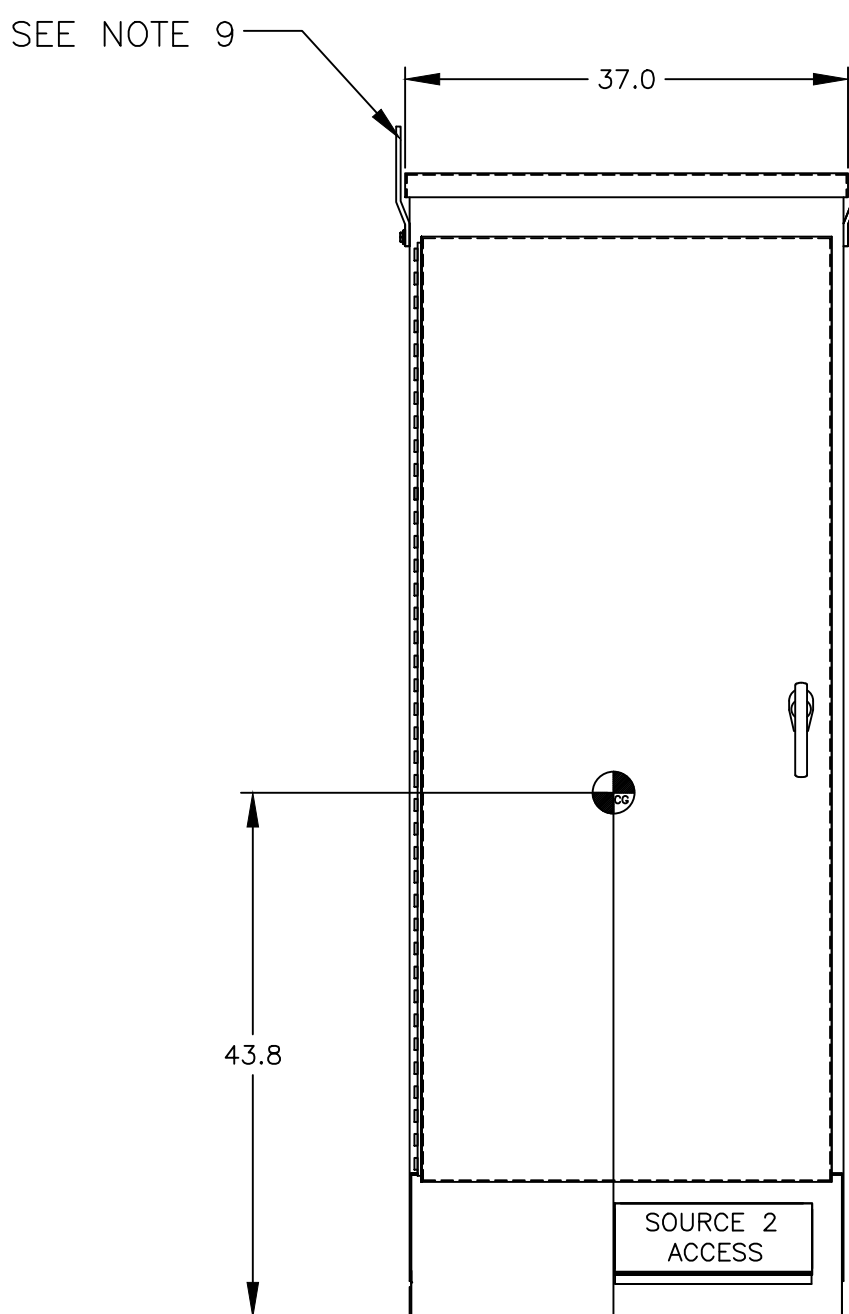
FRONT VIEW  
WITH COVERS



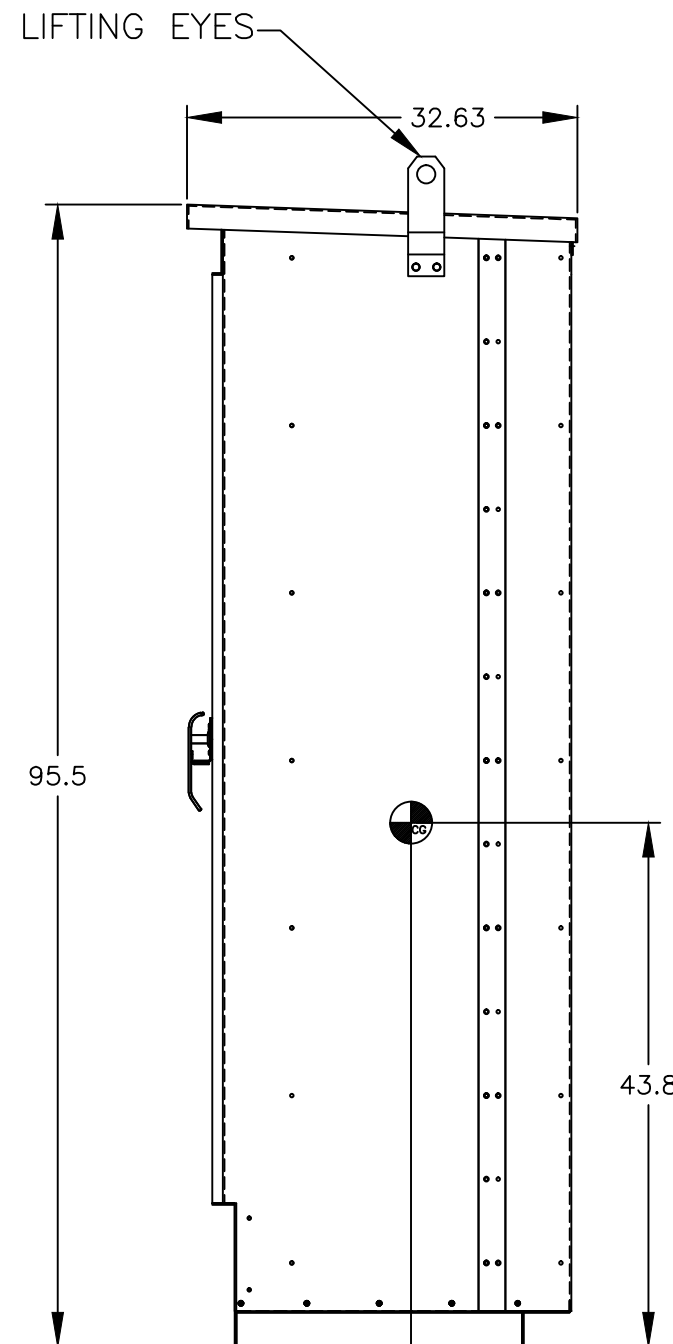
FRONT VIEW  
WITHOUT COVERS



RIGHT SIDE




FRONT VIEW



RIGHT SIDE VIEW

## GENERAL NOTES

1. TYPE 3R ENCLOSURE. FREE STANDING. FLOOR MOUNTED. CODE GAUGE STEEL.
2. EXTERIOR DOORS HAVE PADLOCKABLE HANDLE WITH 3 POINT LATCH.
3. FINISH: TYPE 3R: ANSI 61 GRAY POLYESTER SEMI GLOSS ELECTROSTATIC POWDER.  
TYPE 3RX(R) - EXTERIOR CONSTRUCTED OF CODE GAUGE TYPE 304 STAINLESS STEEL.  
TYPE 3RX(S) - EXTERIOR CONSTRUCTED OF CODE GAUGE TYPE 316 STAINLESS STEEL
4. RECOMMENDED CLEARANCES:  
FRONT: 38 INCHES
5. ALL BUS IS SILVER-PLATED COPPER, BASED ON 1000A PER SQ. IN. DENSITY.
6. A FULL RATED NEUTRAL CONNECTION FOR EACH SOURCE AND THE LOAD IS OPTIONAL. WHEN PROVIDED IT IS IN ONE OF THE FOLLOWING FORMATS AS SPECIFIED BY THE CATALOG NO. NEUTRAL TYPE;  
A. SOLID (COPPER BUS) NEUTRAL.  
B. SWITCH (COPPER BUS) NEUTRAL.
7. DESIGNED FOR FRONT ACCESS
8. FOR SPECIFIED TRANSFER SWITCH, REFER TO OPERATOR'S MANUAL PROVIDED WITH UNIT.
9. LIFTING PLATES: SECTIONS ARE SUPPLIED WITH LIFTING PLATES.  
INSPECT PLATES FOR DAMAGE AND TORQUE BOLTS TO 45 FT LBS BEFORE USE.  
REFER TO ANSI/NEMA PB 2.1 FOR PROPER HANDLING OF EQUIPMENT.  
AFTER INSTALLATION OF SECTION, REMOVE LIFTING PLATES.  
REINSTALL BOLTS INTO EXTERIOR HOLES AND TORQUE TO APROX. 20 FT LBS.
10. SECTION 1 & SECTION 1T SHIP AS 1 UNIT.

11.  CENTER OF GRAVITY.
12. APPROXIMATE WEIGHT: 1004 LBS

## SPECIFICATIONS

1. SYSTEM RATING: 450 AMPS, 500 AMPS, 600 AMPS, 3 $\phi$ , 4W OR 1 $\phi$ , 3W.  
SHORT CIRCUIT RATING- SOURCE 1: 50,000 RMS SYM AMPERES @ 480V, 65,000 RMS SYM AMPERES @ 240V  
SOURCE 2: 22,000 RMS SYM AMPERES @ 480V
2. NEUTRAL BUS: 100% RATED.
3. GROUND BUS: 20% RATED.
4. APPLICABLE LABELS: U.L. 1008, U.L. 891, SUITABLE ONLY FOR USE AS SERVICE EQUIPMENT.

## TERMINATIONS 450-600 AMPS

1. SUPPLIED WITH MECHANICAL (SCREW TYPE) LUGS FOR CU/AL CABLE.  
NORMAL: (2) 3/0 AWG - 500MCM PER PHASE & NEUTRAL  
LOAD: (2) #2 AWG - 600MCM PER PHASE & NEUTRAL  
SOURCE 2: (2) 1016 SERIES SINGLE POLE CAM LOCK MALE RECEPTICALS PER PHASE & NEUTRAL  
GROUND: (6) 1/0 -600MCM

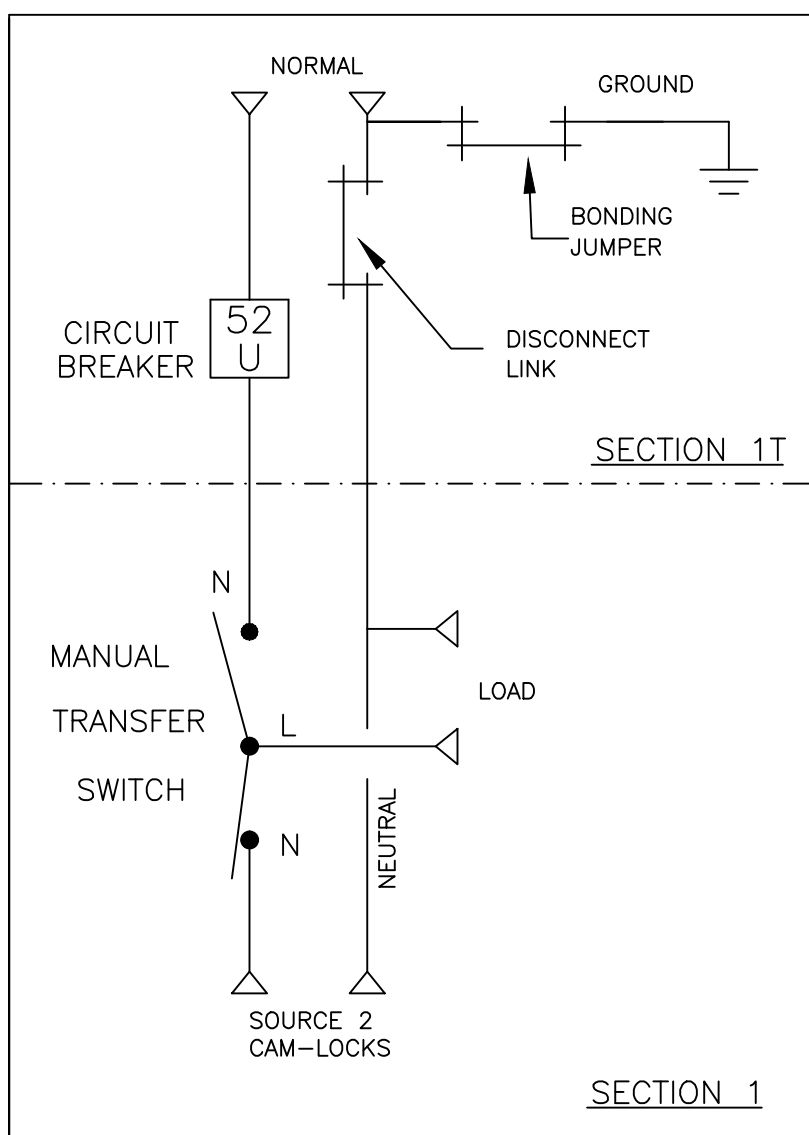
SUITABLE WIRE BENDING SPACE IS PROVIDED AS PER THE NEC

2. OPTIONAL LUGS MAY BE SUPPLIED.

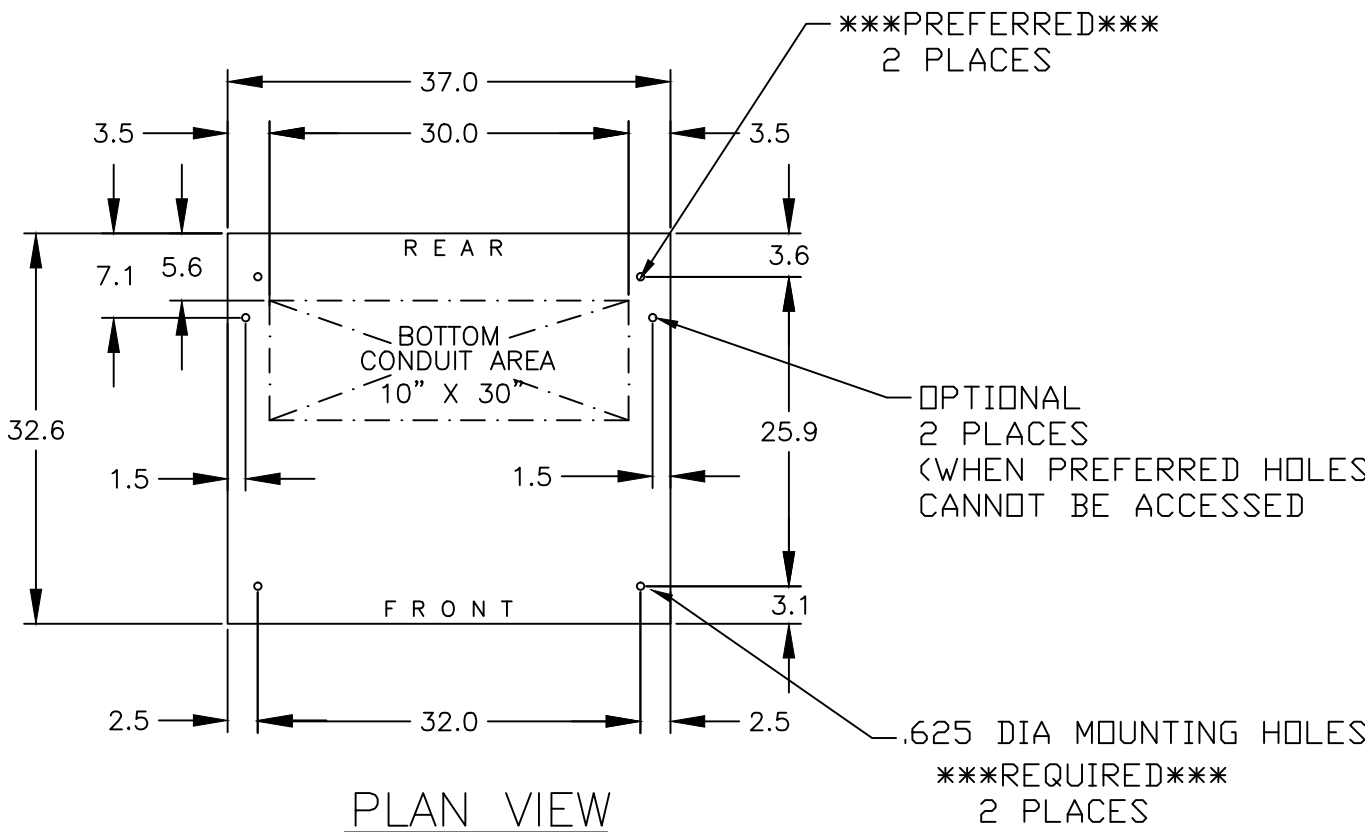
## CIRCUIT BREAKER: ITEM 52U

SQUARE "D" 80% RATED, TYPE 'MJL', 800AF/450AT, 800AF/500AT, 800AF/600AT  
MOLDED CASE, ELECTRONIC TRIP.

## ONE LINE DIAGRAM



(WITH SOLID NEUTRAL)



PLAN VIEW

A	269192	BCG	RN	9/26/17
—	267472	LY	RN	3/6/17

PROJECT NAME:		REV. TO SHEET	ECN NO.	BY	APP.	DATE
OUTLINE		MOUNTING				
JMUQ 450A - 600A, MJL SE BRKR ON NORMAL,CAMLOKS ON SOURCE 2		SECTION 1 & 1T				
TYPE 3R/3RX 96 X 37 X 33		COMPUTER GENERATED DRAWING				
DRAWN BY	LY	DATE	3/6/17	MANUFACTURING TOLERANCES TO BE IN ACCORDANCE WITH ASCO PROCEDURE MP-1-003. FOR PLASTIC PARTS SEE MP-1-005	ASSEM. REF. NO.	SCALE 1/16" = 1" SIZE DS
CHECKED	RN			PROPERTY OF ASCO POWER TECHNOLOGIES, USE PERMITTED FOR OUR WORK ONLY. ALL RIGHTS OF DESIGN OR INVENTION ARE RESERVED.		
PROJECT APPROVAL				977101-001		
FINAL APPROVAL				ASCOTM ASCO POWER TECHNOLOGIES, L.P. FLORHAM PARK, NEW JERSEY 07932 U.S.A.		
DRAWING A		ECN NO.	269192	SHEET 1 OF 1		