

D

C

B

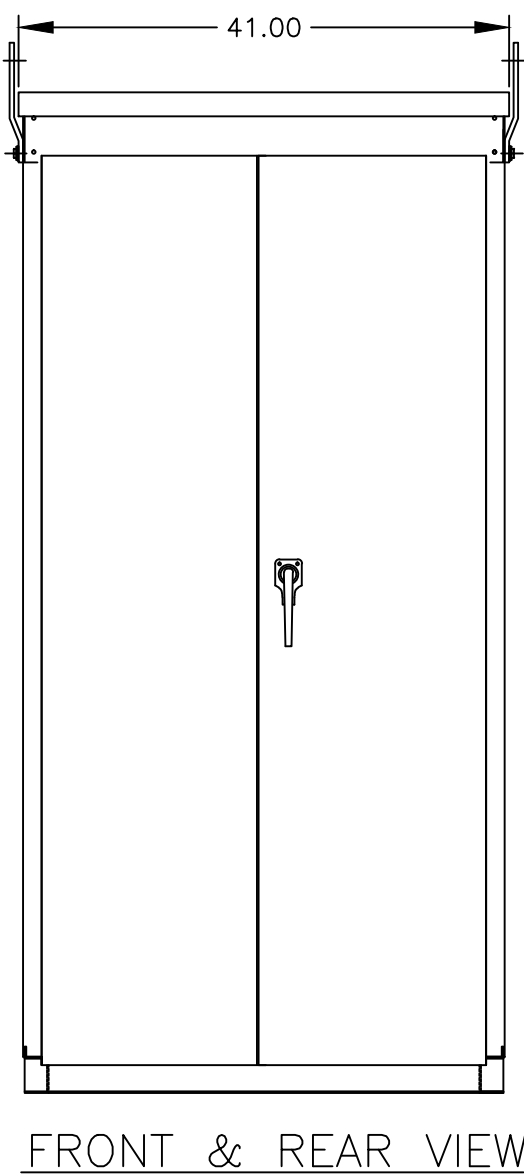
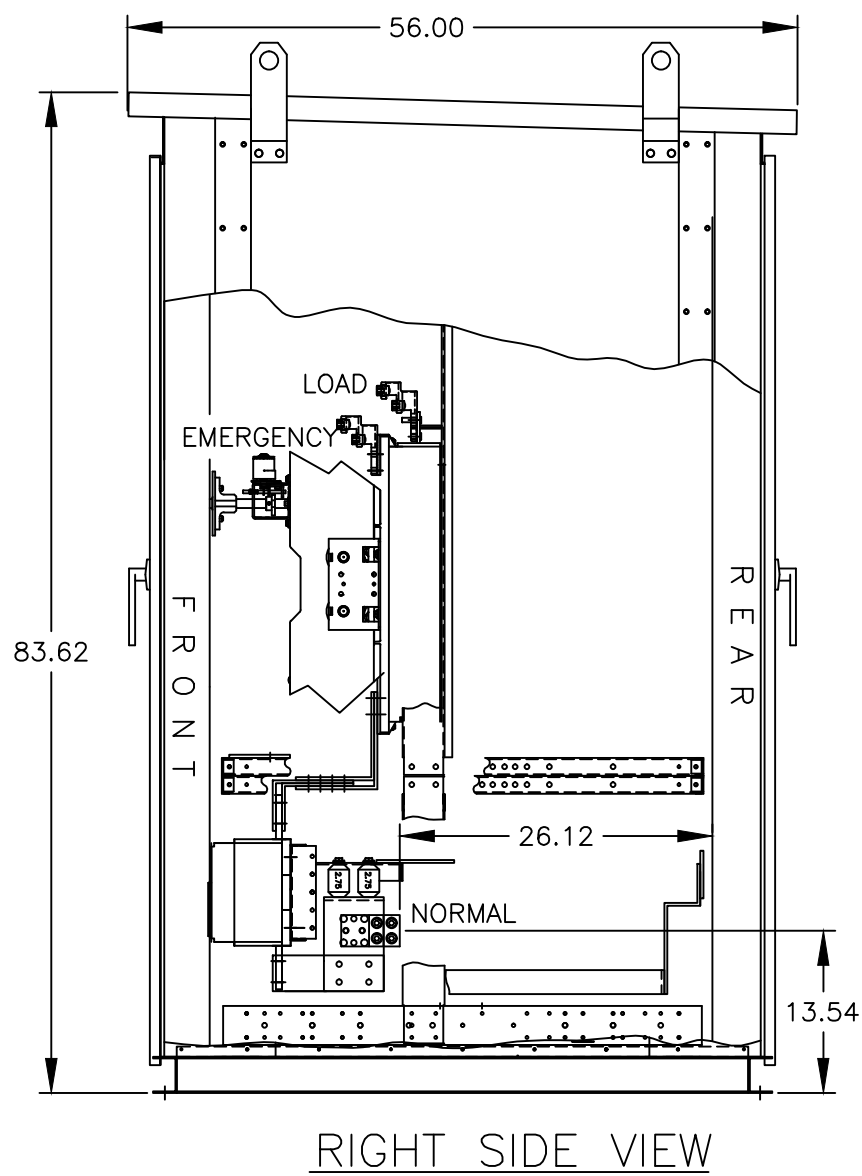
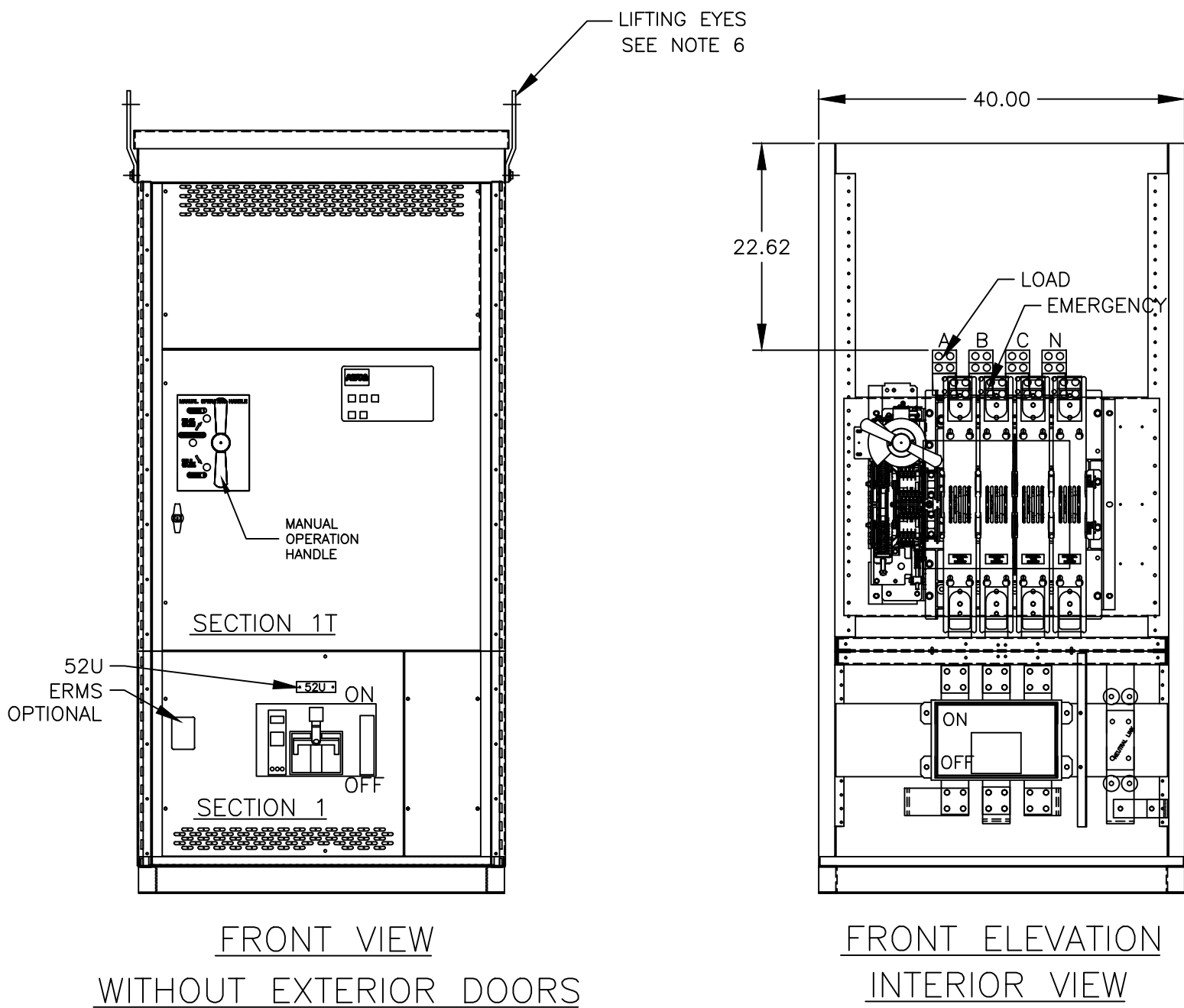
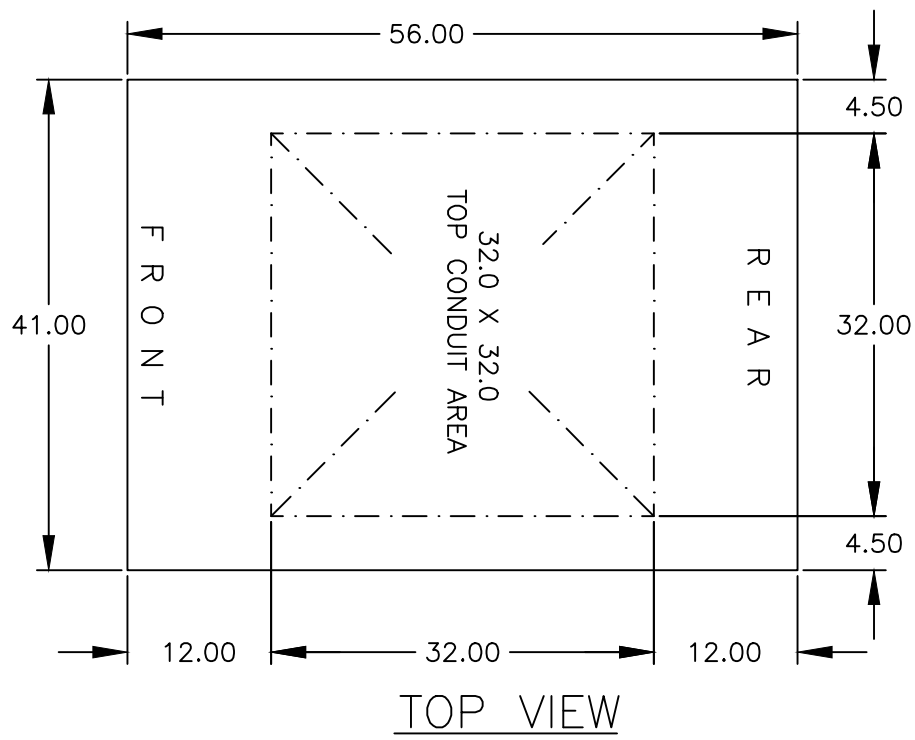
A

D

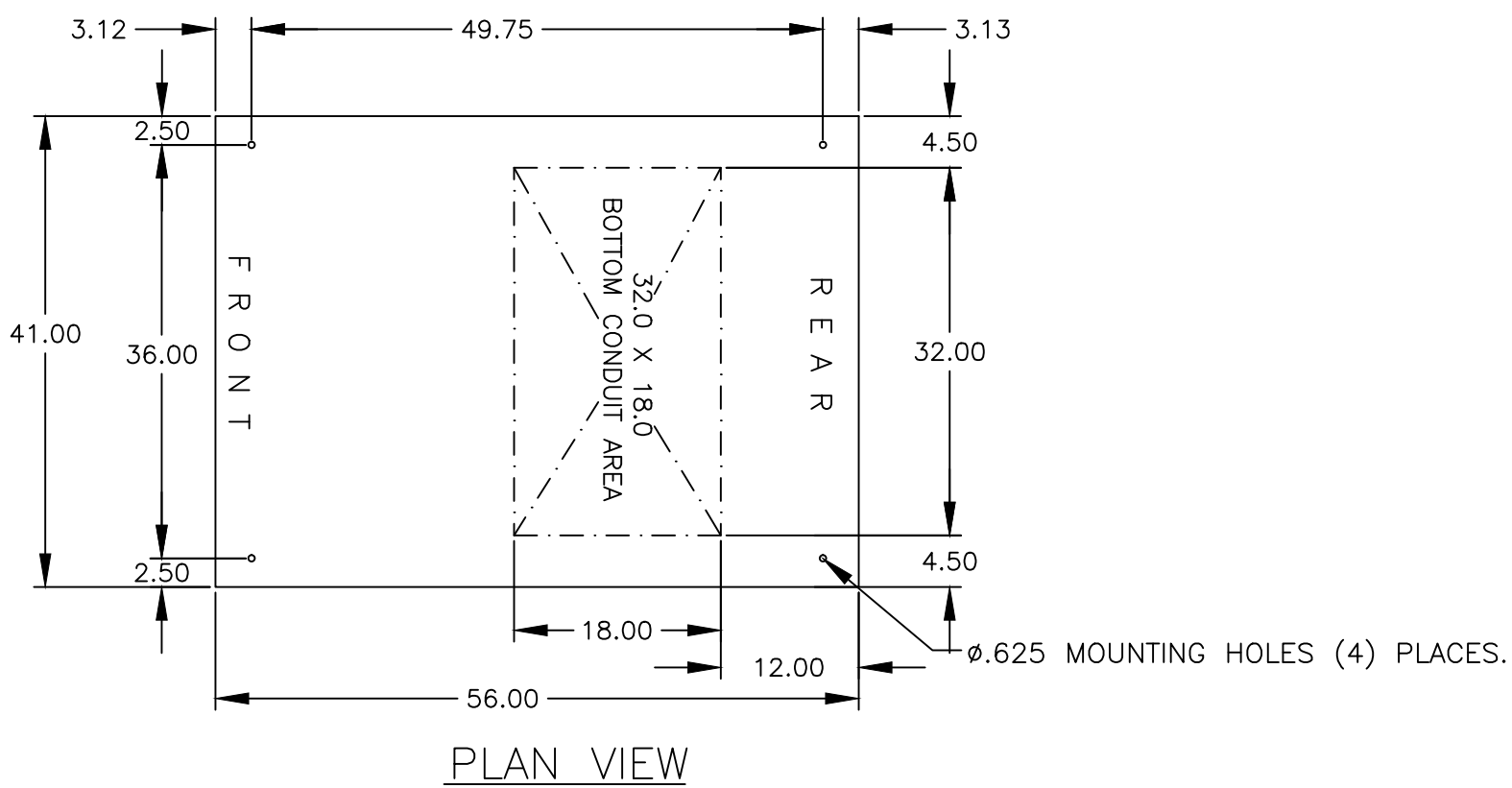
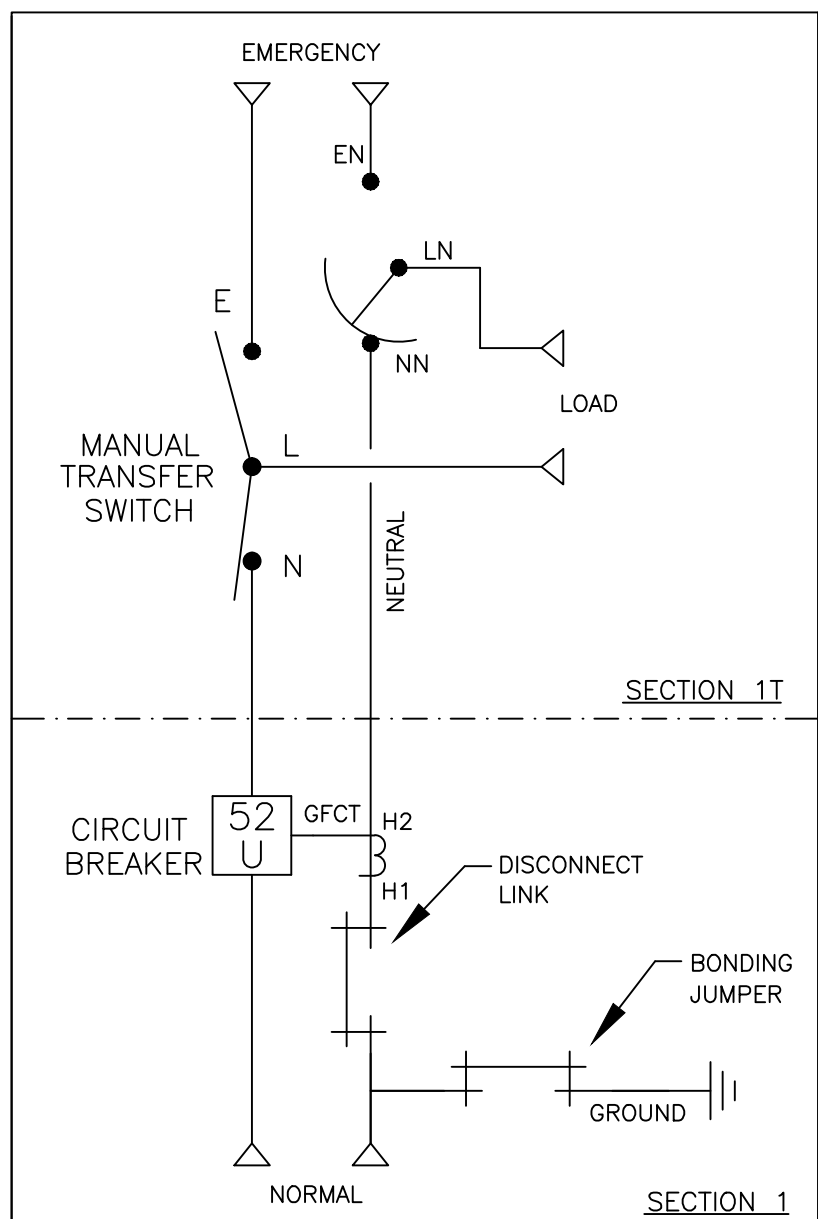
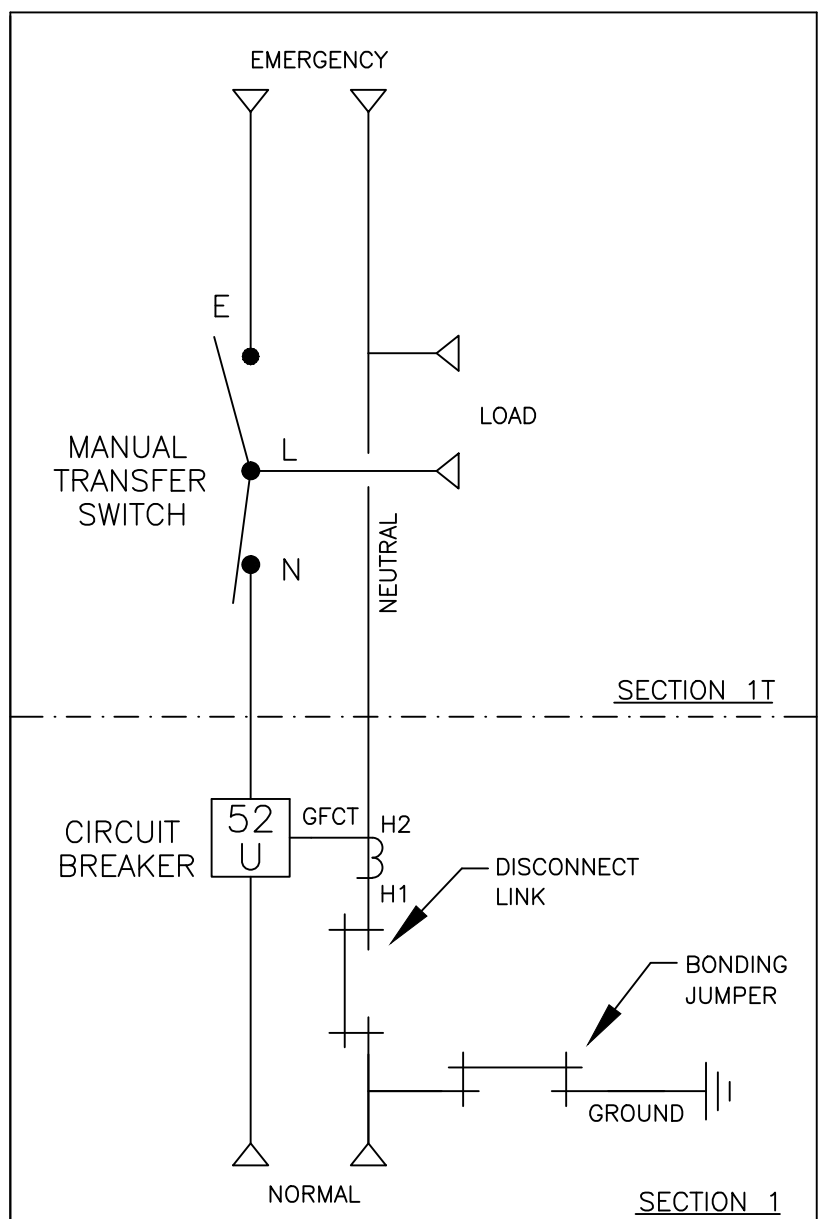
C

B

A



### ONE LINE DIAGRAMS



### GENERAL NOTES

- FLOOR MOUNTED ENCLOSURE.  
TYPE 3R CONSTRUCTED FROM CODE GAUGE STEEL.  
FINISH: TYPE 3R, ANSI 61 GRAY POLYESTER SEMI GLOSS ELECTROSTATIC POWDER.  
TYPE 3RX EXTERIOR CONSTRUCTED FROM CODE GAUGE STAINLESS STEEL.  
(R) EXTERIOR CONSTRUCTED FROM TYPE 304 STAINLESS STEEL.  
(S) EXTERIOR CONSTRUCTED FROM TYPE 316 STAINLESS STEEL.
- EXTERIOR DOORS HAVE PADLOCKABLE HANDLES WITH 3-POINT LATCH
- DESIGNED FOR FRONT & REAR ACCESS.
- RECOMMENDED CLEARANCES: FRONT: 38" REAR: 36"
- EXTERIOR VENTS ARE SUPPLIED WITH POLYESTER DUST FILTERS.
- LIFTING PLATES: SECTIONS ARE SUPPLIED WITH LIFTING PLATES. INSPECT PLATES FOR DAMAGE AND TORQUE BOLTS TO 45 FT LBS BEFORE USE. REFER TO ANSI/NEMA PB 2.1 FOR PROPER HANDLING OF EQUIPMENT. AFTER INSTALLATION OF SECTION, REMOVE LIFTING PLATES. REINSTALL BOLTS INTO EXTERIOR HOLES AND TORQUE TO APPROXIMATELY 20 FT LBS.
- SECTION 1 & SECTION 1T SHIP AS 1 UNIT.

### SPECIFICATIONS

- SERVICE VOLTAGE:  
SYSTEM RATING: 1000 AMPS, 1200 AMPS, 3Ø, 4W OR 1Ø, 3W.  
SHORT CIRCUIT RATING- 50,000 RMS SYM AMPERES @ 480V.  
THE EMERGENCY SOURCE INPUT MUST BE PROTECTED BY A REMOTE OVERCURRENT PROTECTION DEVICE AS LISTED ON THE MARKINGS ON THE TRANSFER SWITCH.
- GROUND BUS: 20% RATED.
- NEUTRAL BUS: 100% RATED.
- APPLICABLE LABELS: U.L. 891- SUITABLE ONLY FOR USE AS SERVICE EQUIPMENT.

### TRANSFER SWITCH

- H FRAME MANUAL TRANSFER SWITCH 1000A - 1200A.
- TRANSFER SWITCH RATING: 1000 AMPS, 1200 AMPS.  
SHORT CIRCUIT RATING WHEN PROTECTED BY A CIRCUIT BREAKER  
TIME RESPONSE, MAXIMUM 0.05 SECONDS: 50,000 RMS SYM @ 480V.  
SPECIFIC BREAKER RATING: 65,000 RMS SYM @ 480V.
- A FULL RATED NEUTRAL CONNECTION FOR EACH SOURCE AND THE LOAD IS OPTIONAL.  
WHEN PROVIDED IT IS IN ONE OF THE FOLLOWING FORMATS.  
A. SOLID NEUTRAL  
B. SWITCHED NEUTRAL POLE
- UL 1008

### TERMINATIONS 1000-1200 AMPS

- SUPPLIED WITH STANDARD MECHANICAL (SCREW TYPE) LUGS.  
NORMAL: (4) 1/0 AWG - 600MCM PER PHASE & NEUTRAL  
LOAD: (4) 1/0 AWG - 600MCM PER PHASE & NEUTRAL  
EMERGENCY: (4) 1/0 AWG - 600MCM PER PHASE & NEUTRAL  
GROUND: (12) 1/0 -600MCM  
A. SUITABLE WIRE BENDING SPACE IS PROVIDED AS PER THE NEC
- OPTIONAL LUGS MAY BE SUPPLIED.

### CIRCUIT BREAKER: ITEM 52U

- SQUARE "D" 80% RATED, TYPE 'RJF', 2500AF/1000AT OR 2500AF/1200AT STATIONARY MOUNTED, MANUALLY OPERATED, WITH LONG DELAY, SHORT DELAY, INSTANTANEOUS AND GROUND FAULT TRIP SETTINGS.
- OPTIONAL 100% RATED BREAKER MAY BE SUPPLIED.
- OPTIONAL ENERGY REDUCTION AND MAINTENANCE SETTING SYSTEM MAY BE SUPPLIED.
- U.L. 489.

PROJECT NAME:		REV. TO SHEET	ECN NO.	BY	APP.	DATE
A		277065	RP	RN	02-07-19	
SEE ECN		270749	MCH	RN	01-25-18	
NEW ISSUE						
OUTLINE		MOUNTING				
HMUS 1000A - 1200A, RJF SERVICE ENTRANCE BREAKER ON NORMAL						
TYPE 3R/3RX, 84 X 41 X 56						
DRAWN BY	MCH	DATE	01-19-18	MANUFACTURING TOLERANCES TO BE IN ACCORDANCE WITH ASCO PROCEDURE MP-1-003. FOR PLASTIC PARTS SEE MP-1-005	ASSEM. REF. NO.	COMPUTER GENERATED DRAWING
CHECKED	RN			PROPERTY OF ASCO POWER TECHNOLOGIES, USE PERMITTED FOR OUR WORK ONLY. ALL RIGHTS OF DESIGN OR INVENTION ARE RESERVED.		SCALE 1/16" = 1" SIZE DS
PROJECT APPROVAL						DWG. NO. 977104-001
FINAL APPROVAL						DRAWING A REV. ECN NO. 277065 SHEET 10F1