

D

C

B

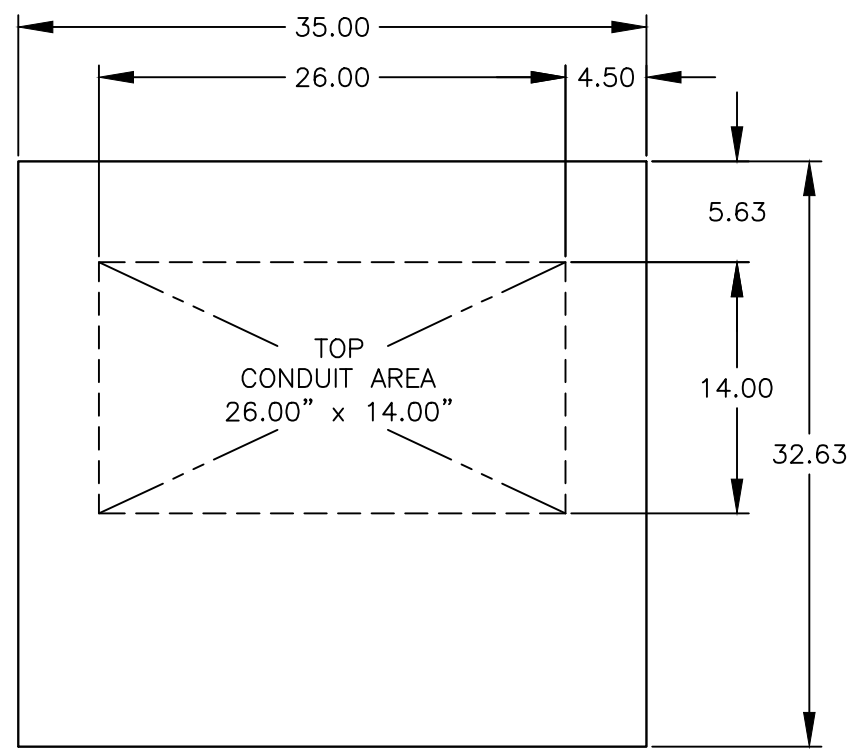
A

D

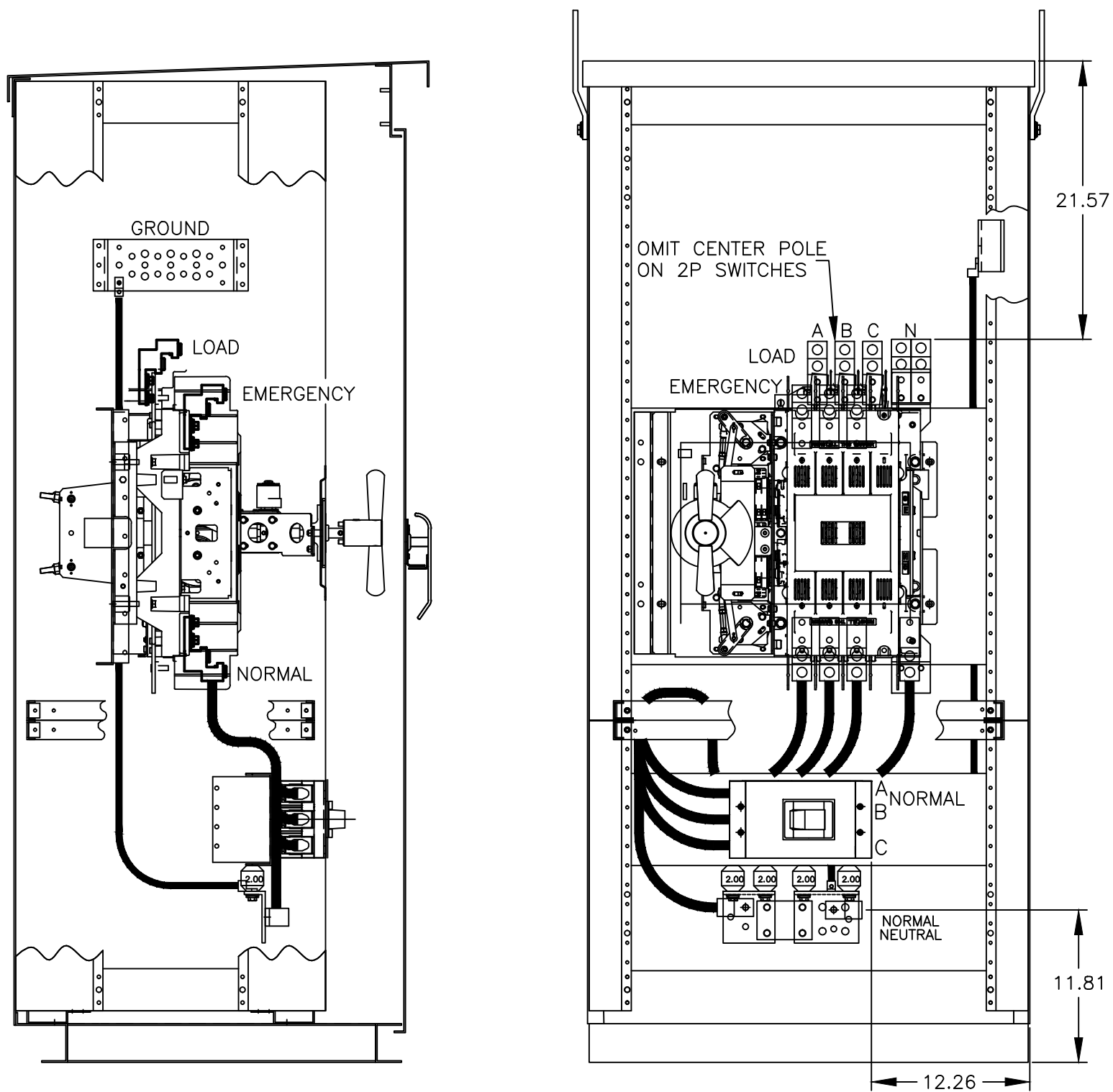
C

B

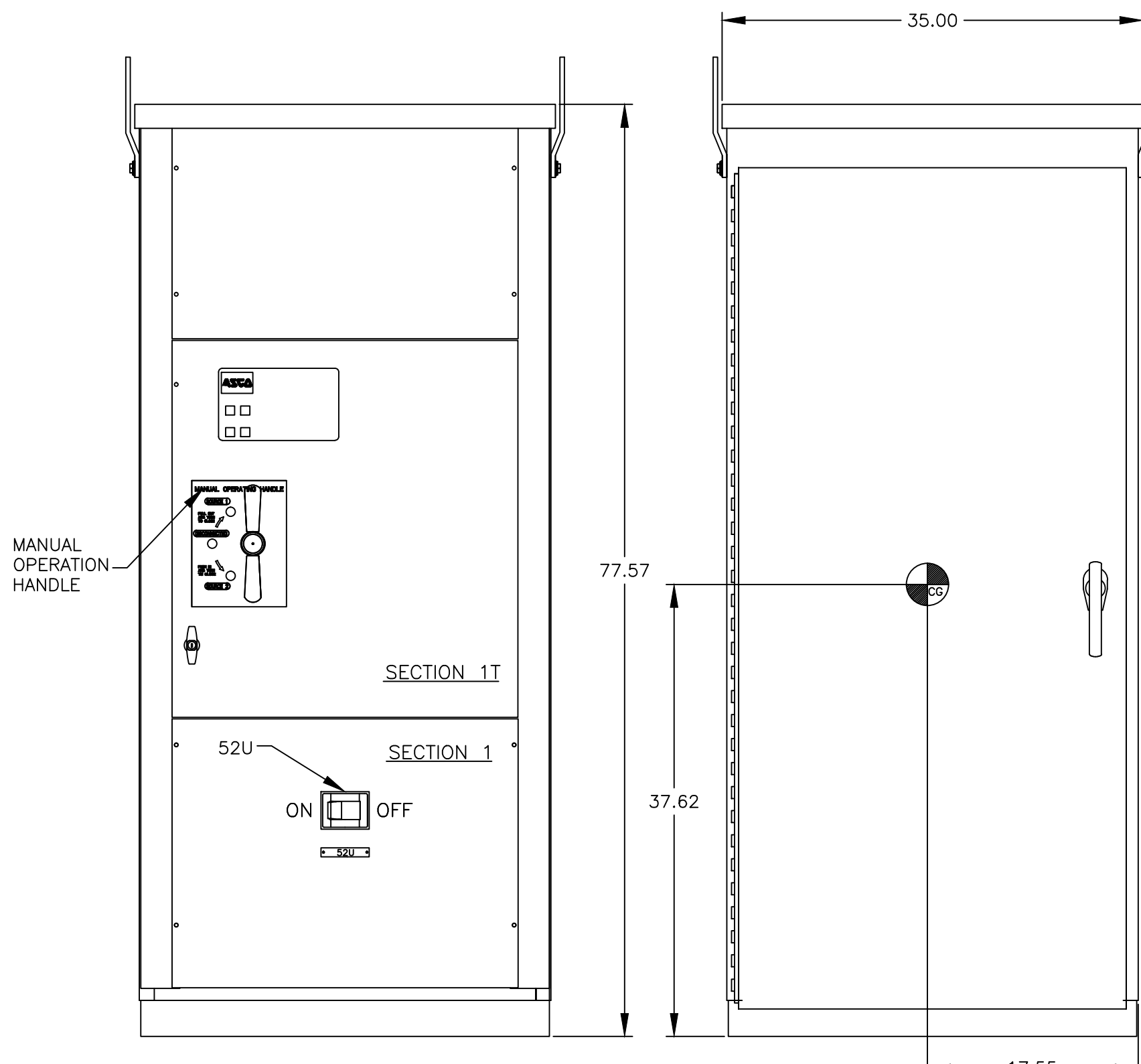
A



"TOP VIEW"

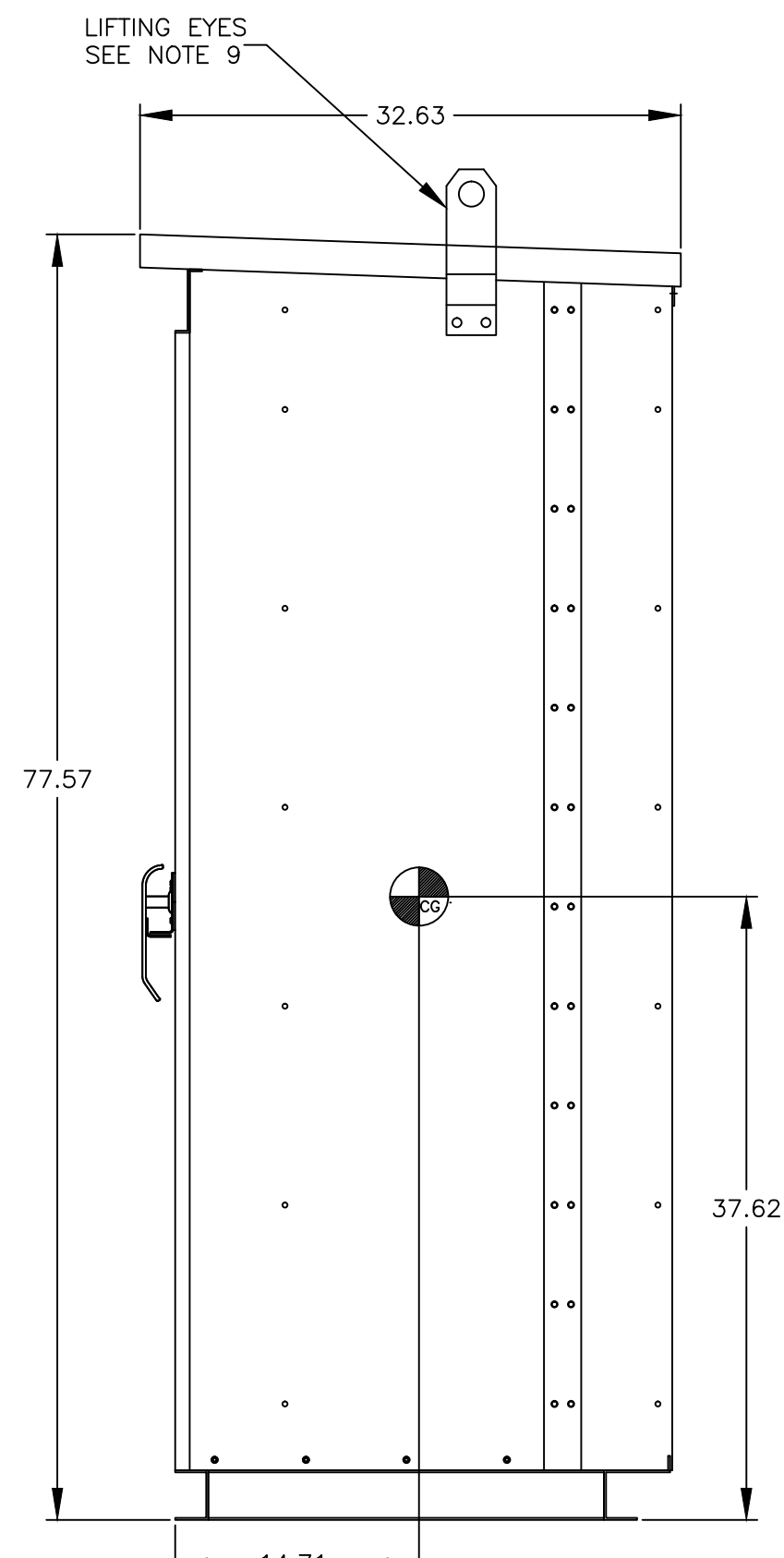


"LEFT SECTION VIEW"

"FRONT VIEW"
"WITHOUT COVER"

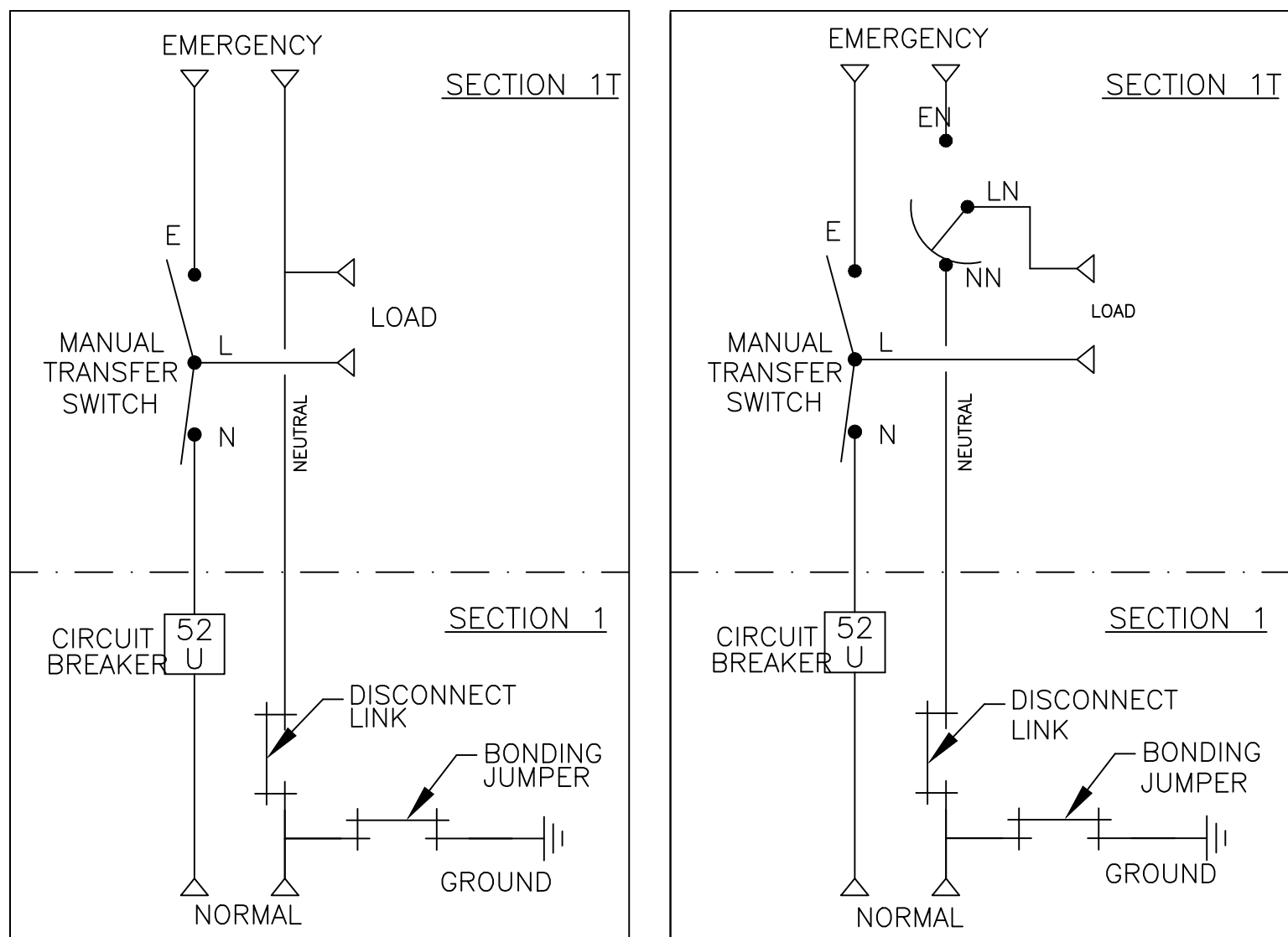
"FRONT INTERIOR VIEW"

"FRONT VIEW"



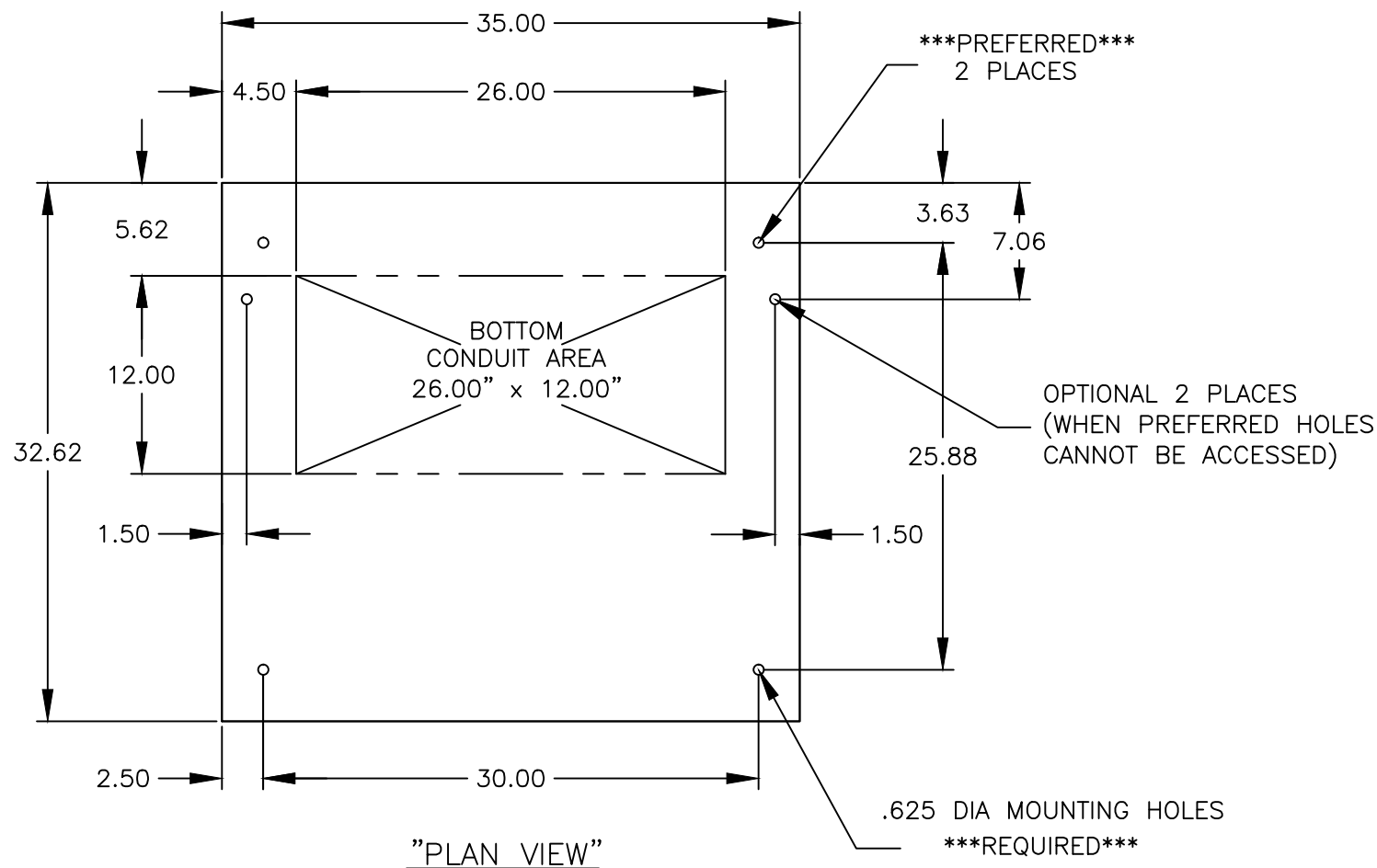
"RIGHT SIDE VIEW"

ONE LINE DIAGRAMS



(WITH SOLID NEUTRAL)

(WITH SWITCHED NEUTRAL)



"PLAN VIEW"

GENERAL NOTES

- FLOOR MOUNTED ENCLOSURE.
TYPE 3R CONSTRUCTED FROM CODE GAUGE STEEL.
FINISH: TYPE 3R, ANSI 61 GRAY POLYESTER SEMI GLOSS ELECTROSTATIC POWDER.
TYPE 3RX EXTERIOR CONSTRUCTED FROM CODE GAUGE STAINLESS STEEL.
(R) EXTERIOR CONSTRUCTED FROM TYPE 304 STAINLESS STEEL.
(S) EXTERIOR CONSTRUCTED FROM TYPE 316 STAINLESS STEEL.
- EXTERIOR DOORS HAVE PADLOCKABLE HANDLES WITH 3-POINT LATCH
- DESIGNED FOR FRONT ACCESS.
- RECOMMENDED CLEARANCES: FRONT: 38" REAR: NONE
- EXTERIOR VENTS ARE SUPPLIED WITH POLYESTER DUST FILTERS.
- LIFTING PLATES: SECTIONS ARE SUPPLIED WITH LIFTING PLATES. INSPECT PLATES FOR DAMAGE AND TORQUE BOLTS TO 45 FT LBS BEFORE USE. REFER TO ANSI/NEMA PB 2.1 FOR PROPER HANDLING OF EQUIPMENT. AFTER INSTALLATION OF SECTION, REMOVE LIFTING PLATES. REINSTALL BOLTS INTO EXTERIOR HOLES AND TORQUE TO APPROXIMATELY 20 FT LBS.
- CENTER OF GRAVITY
- APPROXIMATE WEIGHT: 985 LBS.
- SECTION 1 & SECTION 1T SHIP AS 1 UNIT.

SYSTEM NOTES

- SYSTEM RATING: 150 AMPS, 175 AMPS, 200 AMPS, 225 AMPS,
250 AMPS, 300 AMPS, 350 AMPS, 400 AMPS, 3Ø, 4W OR 1Ø, 3W.
SHORT CIRCUIT RATING- 35,000 RMS SYM AMPERES @ 480V.
THE EMERGENCY SOURCE INPUT MUST BE PROTECTED BY A REMOTE OVERCURRENT PROTECTION DEVICE AS LISTED ON THE MARKINGS ON THE TRANSFER SWITCH.
- ALL BUS IS SILVER PLATED COPPER, BASED ON 1000A PER SQ. IN. DENSITY.
- NEUTRAL BUS: 100% RATED.
- GROUND BUS: 20% RATED.
- APPLICABLE LABELS: U.L. 891. SUITABLE ONLY FOR USE AS SERVICE EQUIPMENT.

TRANSFER SWITCH

- J FRAME TRANSFER SWITCH 150A - 400A.
- TRANSFER SWITCH RATING: 150 AMPS, 200 AMPS, 260 AMPS, 400 AMPS.
SHORT CIRCUIT RATING WHEN PROTECTED BY A CIRCUIT BREAKER
TIME RESPONSE, MAXIMUM 0.05 SECONDS: 42,000 RMS SYM @ 480V
- A FULL RATED NEUTRAL CONNECTION FOR EACH SOURCE AND THE LOAD IS OPTIONAL.
WHEN PROVIDED IT IS IN ONE OF THE FOLLOWING FORMATS.
A. SOLID NEUTRAL
B. SWITCHED NEUTRAL POLE

TERMINATIONS 150-400 AMPS

- SUPPLIED WITH MECHANICAL (SCREW TYPE) LUGS SUITABLE FOR CU/AL CABLE .
NORMAL: (2) 1/0 AWG-250MCM PER PHASE AND NEUTRAL OR
(1) #1-600MCM PER PHASE AND NEUTRAL
EMERGENCY: (2) 1/0 AWG-250MCM PER PHASE AND NEUTRAL OR
(1) #4-600MCM PER PHASE AND NEUTRAL
LOAD: (2) 1/0 AWG-250MCM PER PHASE AND NEUTRAL OR
(1) #4-600MCM PER PHASE AND NEUTRAL
GROUND: (6) 1/0 AWG - 250 MCM OR
(3) #4 - 600MCM
SUITABLE WIRE BENDING SPACE IS PROVIDED AS PER THE NEC
- OPTIONAL LUGS MAY BE SUPPLIED.

CIRCUIT BREAKER: ITEM 52U

- SQUARE "D" 80% RATED TYPE 'LHL', 400AF/150AT, 400AF/175AT, 400AF/200AT
400AF/225AT, 400AF/250AT, 400AF/300AT, 400AF/350AT, 400AF/400AT,
MOLDED CASE CIRCUIT BREAKER, THERMAL MAGNETIC TRIP
- U.L. 489

C B A —	273229	SG	RN	07/02/18	
	SEE ECN				
	271068	RP	RN	02-16-18	
	SEE ECN				
A	269192	BCG	RN	9/26/17	
	SEE ECN				
—	268727	SY	RN	08/28/17	
	NEW ISSUE				
PROJECT NAME:					
REV. TO SHEET		ECN NO.	BY	APP.	DATE
OUTLINE		MOUNTING			
JMUS 150A – 400A, LHL SERVICE ENTRANCE BREAKER ON NORMAL TYPE 3R/3RX 78 X 35 X 32.63 SECTION 1 & SECTION 1T					
BY		DATE		MANUFACTURING TOLERANCES TO BE IN ACCORDANCE WITH ASCO PROCEDURE MP-1-003. FOR PLASTIC PARTS SEE MP-1-005	
DRAWN BY		SY		08/24/17	
CHECKED		RN		ASSEM. REF. NO.	
PROJECT APPROVAL		PROPERTY OF ASCO POWER TECHNOLOGIES, USE PERMITTED FOR OUR WORK ONLY. ALL RIGHTS OF DESIGN OR INVENTION ARE RESERVED.			
FINAL APPROVAL		ASCOTM ASCO POWER TECHNOLOGIES, L.P. FLORHAM PARK, NEW JERSEY 07932 U.S.A.			
SCALE 3/32" = 1"		SIZE		DS	
DWG. NO.		977101-003			
DRAWING C		ECN NO.		273229	
REV.		SHEET		1 OF 1	