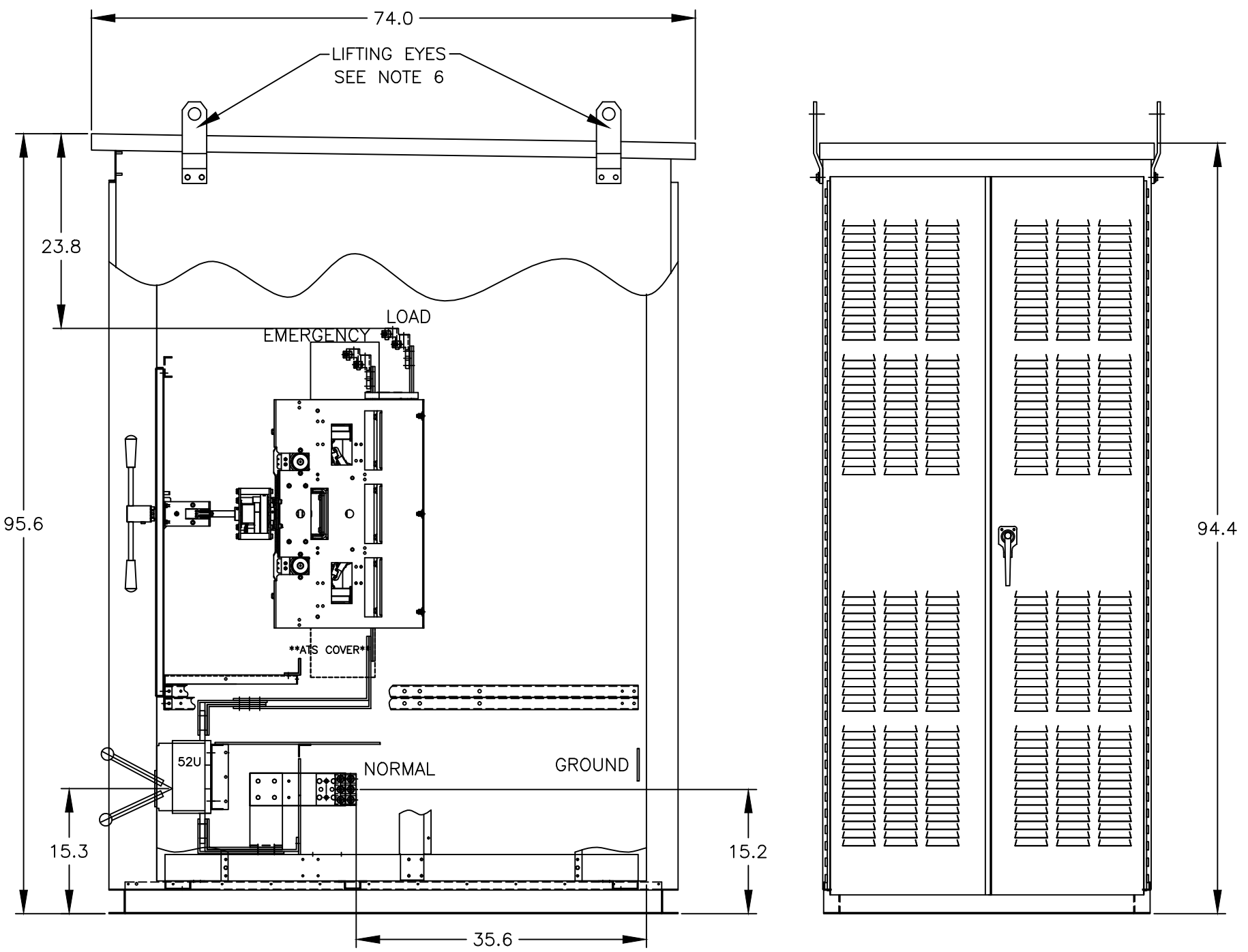
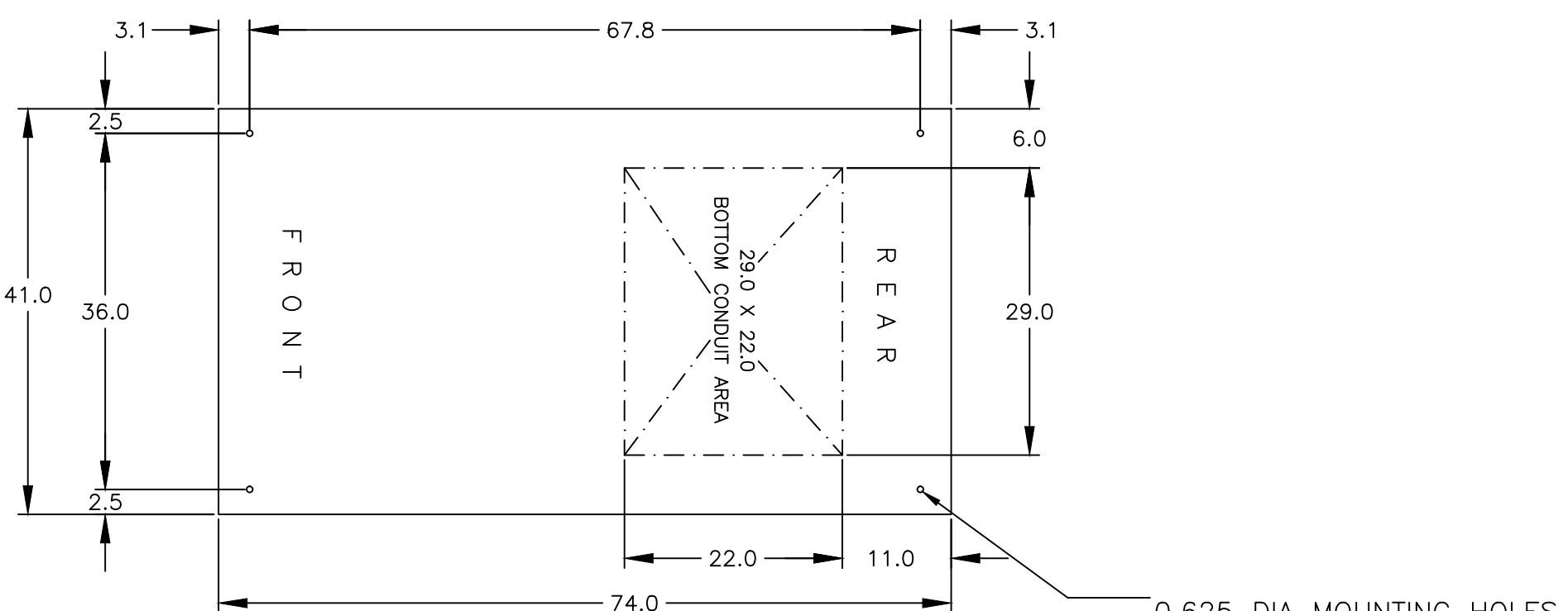


TOP VIEW



RIGHT SIDE VIEW



PLAN VIEW

GENERAL NOTES

- FLOOR MOUNTED ENCLOSURE.  
TYPE 3R CONSTRUCTED FROM CODE GAUGE STEEL.  
FINISH: TYPE 3R, ANSI 61 GRAY POLYESTER SEMI GLOSS ELECTROSTATIC POWDER.  
TYPE 3RX EXTERIOR CONSTRUCTED FROM CODE GAUGE STAINLESS STEEL.  
(R) EXTERIOR CONSTRUCTED FROM TYPE 304 STAINLESS STEEL.  
(S) EXTERIOR CONSTRUCTED FROM TYPE 316 STAINLESS STEEL.
- EXTERIOR DOORS HAVE PADLOCKABLE HANDLES WITH 3-POINT LATCH
- DESIGNED FOR FRONT & REAR ACCESS.
- RECOMMENDED CLEARANCES: FRONT: 40" REAR: 36"
- EXTERIOR VENTS ARE SUPPLIED WITH POLYESTER DUST FILTERS.
- LIFTING PLATES: SECTIONS ARE SUPPLIED WITH POLYESTER LIFTING PLATES. INSPECT PLATES FOR DAMAGE AND TORQUE BOLTS TO 45 FT LBS BEFORE USE. REFER TO ANSI/NEMA PB 2.1 FOR PROPER HANDLING OF EQUIPMENT. AFTER INSTALLATION OF SECTION, REMOVE LIFTING PLATES. REINSTALL BOLTS INTO EXTERIOR HOLES AND TORQUE TO APPROXIMATELY 20 FT LBS.

SYSTEM NOTES

- SYSTEM RATING: 1000 AMPS, 1200 AMPS, 1600 AMPS, 2000 AMPS.  
SHORT CIRCUIT RATING: 65,000 RMS SYM @ 480V.  
THE EMERGENCY SOURCE MUST BE PROTECTED BY A REMOTE OVERCURRENT PROTECTION DEVICE AS LISTED ON THE MARKINGS ON THE TRANSFER SWITCH.
- ALL BUS IS SILVER-PLATED COPPER, BASED ON 1000A PER SQ. IN. DENSITY.
- GROUND: 20%
- NEUTRAL: 100%
- APPLICABLE LABEL(S): U.L. 891, SUITABLE ONLY FOR USE AS SERVICE EQUIPMENT.

TRANSFER SWITCH

- G FRAME TRANSFER SWITCH 1000A - 2000A.
- TRANSFER SWITCH RATING: 1000 AMPS, 1200 AMPS, 1600 AMPS, 2000 AMPS.  
SHORT CIRCUIT RATING WHEN PROTECTED BY A CIRCUIT BREAKER  
TIME RESPONSE, MAXIMUM 0.05 SECONDS: 85,000 RMS SYM @ 480V.
- A FULL RATED NEUTRAL CONNECTION FOR EACH SOURCE AND THE LOAD IS OPTIONAL.  
WHEN PROVIDED IT IS IN ONE OF THE FOLLOWING FORMATS.  
A. SOLID NEUTRAL  
B. SWITCHED NEUTRAL POLE
- UL 1008

TERMINATIONS 1000-1200 AMPS

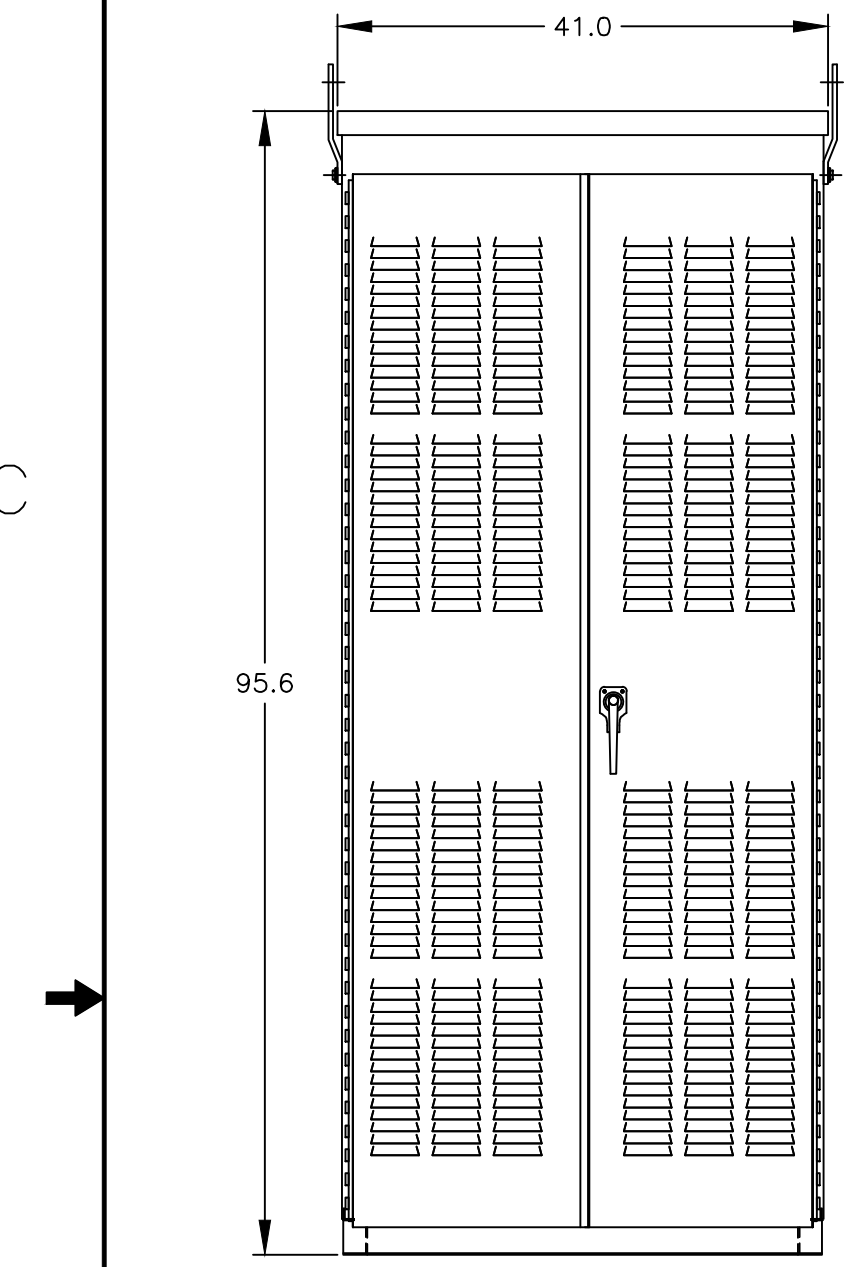
- SUPPLIED WITH STANDARD MECHANICAL (SCREW TYPE) LUGS .  
NORMAL: (4) 1/0 AWG - 600MCM PER PHASE & NEUTRAL  
LOAD: (4) 1/0 AWG - 600MCM PER PHASE & NEUTRAL  
EMERGENCY: (4) 1/0 AWG - 600MCM PER PHASE & NEUTRAL  
GROUND: (12) 1/0 -750MCM
- SUITABLE WIRE BENDING SPACE IS PROVIDED AS PER THE NEC
- OPTIONAL LUGS MAY BE SUPPLIED.

TERMINATIONS 1600-2000 AMPS

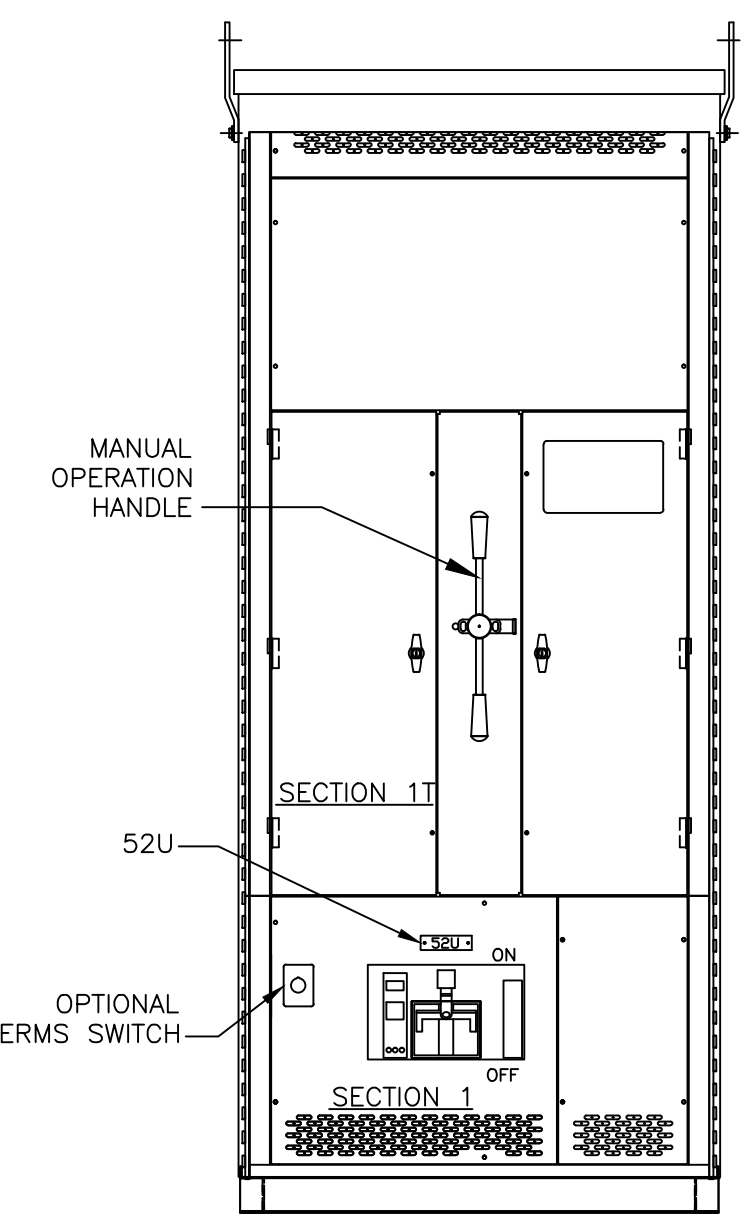
- SUPPLIED WITH STANDARD MECHANICAL (SCREW TYPE) LUGS .  
NORMAL: (6) 1/0 AWG - 600MCM PER PHASE & NEUTRAL  
LOAD: (6) 1/0 AWG - 600MCM PER PHASE & NEUTRAL  
EMERGENCY: (6) 1/0 AWG - 600MCM PER PHASE & NEUTRAL  
GROUND: (18) 1/0 -750MCM
- SUITABLE WIRE BENDING SPACE IS PROVIDED AS PER THE NEC
- OPTIONAL LUGS MAY BE SUPPLIED.

CIRCUIT BREAKER: ITEM 52U

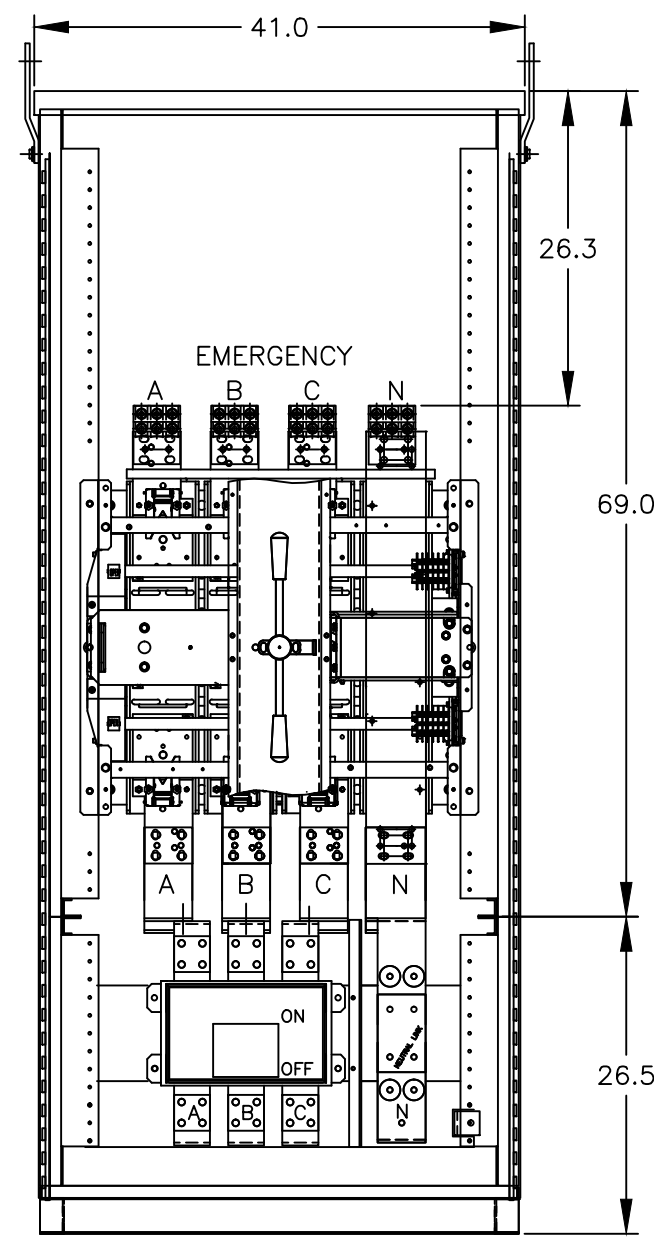
- SQUARE "D" 80% RATED TYPE "RJF", 3000AF/1000AT, 3000AF/1200AT, 3000AF/1600AT, 3000AF/2000AT STATIONARY MOUNTED, MANUALLY OPERATED, WITH LONG DELAY, SHORT DELAY, INSTANTANEOUS AND GROUND FAULT TRIP SETTINGS.  
SHORT CIRCUIT RATING: AIC 65,000 RMS SYM @ 480V.
- OPTIONAL ENERGY REDUCTION MAINTENANCE SETTING SYSTEM MAY BE SUPPLIED.
- OPTIONAL 100% RATED
- U.L. 489



FRONT VIEW

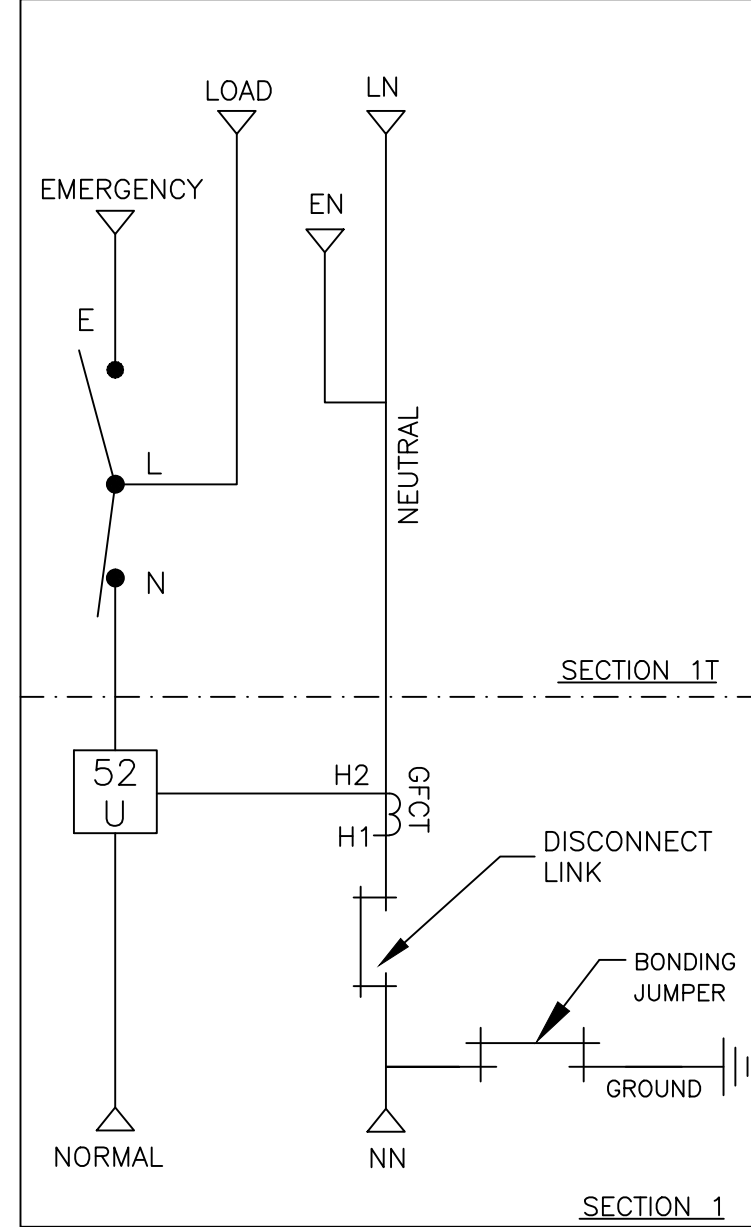


FRONT VIEW WITHOUT EXTERIOR DOORS

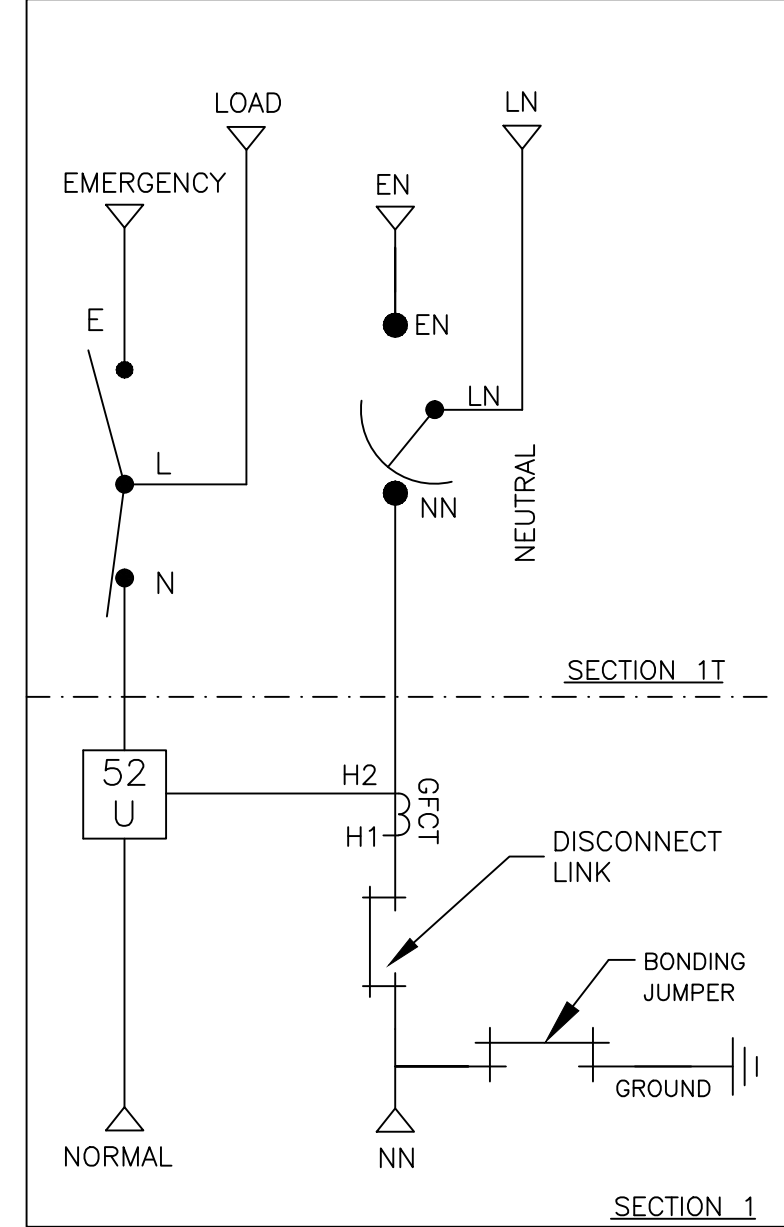


FRONT ELEVATION INTERIOR VIEW

ONE LINE DIAGRAMS



(WITH SOLID NEUTRAL)



(WITH SWITCHED NEUTRAL)

PROJECT NAME:		277643 VAK RN 03-12-19	
OUTLINE		MOUNTING	
GMUS 1000A - 2000A, RJF SE BREAKER, TYPE 3R/3RX, 96 X 41 X 74, SECTION 1 & 1T			
DRAWN BY	VAK	DATE	06-21-18
CHECKED	RN	ASSEM. REF. NO.	
PROJECT APPROVAL		COMPUTER GENERATED DRAWING	
FINAL APPROVAL		SCALE 1/16" = 1" SIZE DS	
PROPERTY OF ASCO POWER TECHNOLOGIES. USE PERMITTED FOR OUR WORK ONLY. ALL RIGHTS OF DESIGN OR INVENTION ARE RESERVED.		DWG. NO. 977108-002	
ASCO Power Technologies, L.P. FLORENCE PARK, NEW JERSEY 07932 U.S.A.		DRAWING A ECU NO. 277643 SHEET 1 OF 1	