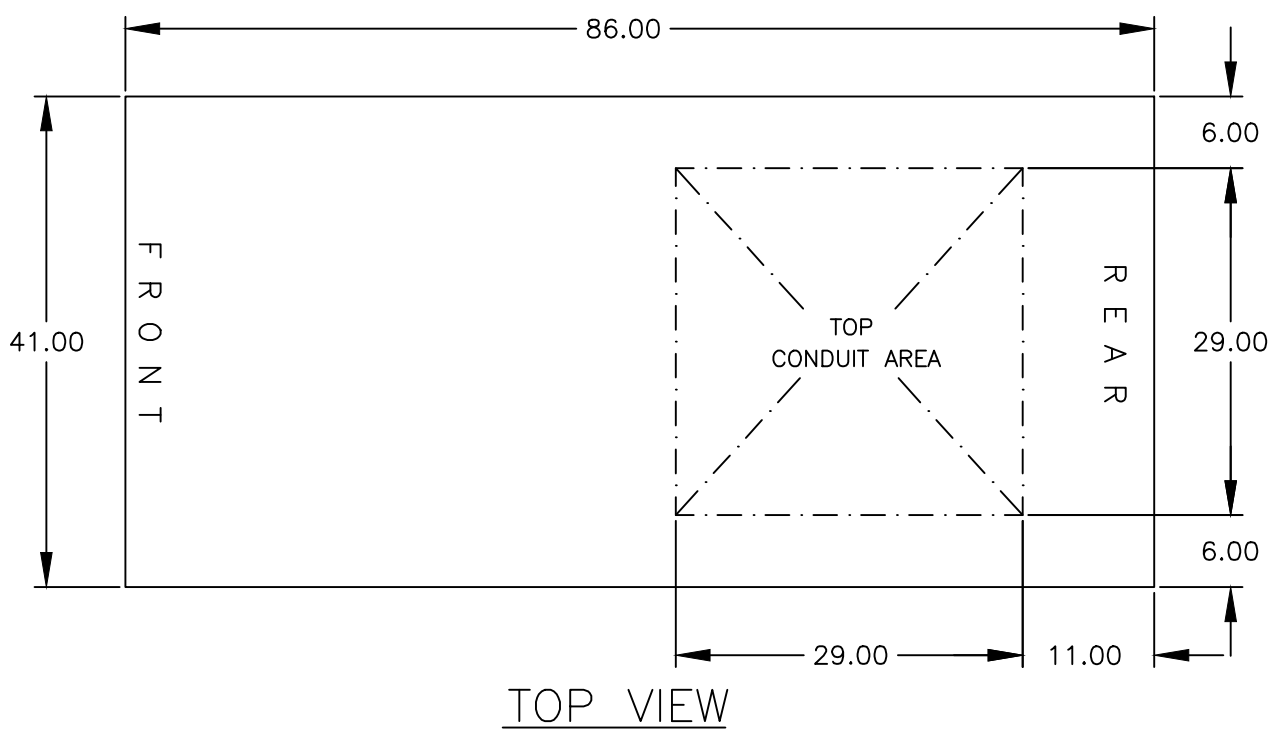


D

D



GENERAL NOTES

- FLOOR MOUNTED ENCLOSURE.
TYPE 3R CONSTRUCTED FROM CODE GAUGE STEEL.
FINISH: TYPE 3R, ANSI 61 GRAY POLYESTER SEMI GLOSS ELECTROSTATIC POWDER.
TYPE 3RX EXTERIOR CONSTRUCTED FROM CODE GAUGE STAINLESS STEEL.
(R) EXTERIOR CONSTRUCTED FROM TYPE 304 STAINLESS STEEL.
(S) EXTERIOR CONSTRUCTED FROM TYPE 316 STAINLESS STEEL.
- EXTERIOR DOORS HAVE PADLOCKABLE HANDLES WITH 3-POINT LATCH.
- DESIGNED FOR FRONT ACCESS & REAR ACCESS.
- RECOMMENDED CLEARANCES: FRONT: 38" REAR: 36".
- EXTERIOR VENTS ARE SUPPLIED WITH POLYESTER DUST FILTERS.
- LIFTING PLATES: SECTIONS ARE SUPPLIED WITH LIFTING PLATES. INSPECT PLATES FOR DAMAGE AND TORQUE BOLTS TO 45 FT LBS BEFORE USE. REFER TO ANSI/NEMA PB 2.1 FOR PROPER HANDLING OF EQUIPMENT. AFTER INSTALLATION OF SECTION, REMOVE LIFTING PLATES. REINSTALL BOLTS INTO EXTERIOR HOLES AND TORQUE TO APPROXIMATELY 20 FT LBS.

SYSTEM NOTES

- SYSTEM RATING: 2500 AMPS, 3000 AMPS.
SHORT CIRCUIT RATING: 100,000 RMS SYM @ 480V.
THE EMERGENCY SOURCE MUST BE PROTECTED BY A REMOTE OVERCURRENT PROTECTION DEVICE AS LISTED ON THE MARKINGS ON THE TRANSFER SWITCH.
- ALL BUS IS SILVER-PLATED COPPER, BASED ON 800A PER SQ. IN. DENSITY.
- GROUND: 20% RATED.
- NEUTRAL: 100% RATED.
- APPLICABLE LABEL(S): U.L. 891, SUITABLE ONLY FOR USE AS SERVICE EQUIPMENT.

TRANSFER SWITCH

- G FRAME TRANSFER SWITCH 2500A - 3000A.
- TRANSFER SWITCH RATING: 2500 AMPS, 3000 AMPS.
SHORT CIRCUIT RATING WHEN PROTECTED BY A CIRCUIT BREAKER
TIME RESPONSE, MAXIMUM 0.05 SECONDS: 100,000 RMS SYM @ 480V.
THE SOURCES MUST BE PROTECTED BY A REMOTE OVERCURRENT PROTECTION DEVICE AS LISTED ON THE MARKINGS ON THE TRANSFER SWITCH.
- A FULL RATED NEUTRAL CONNECTION FOR EACH SOURCE AND THE LOAD IS OPTIONAL.
WHEN PROVIDED IT IS IN ONE OF THE FOLLOWING FORMATS.
 - SOLID NEUTRAL
 - SWITCHED NEUTRAL POLE
- UL 1008

TERMINATIONS 2500-3000 AMPS

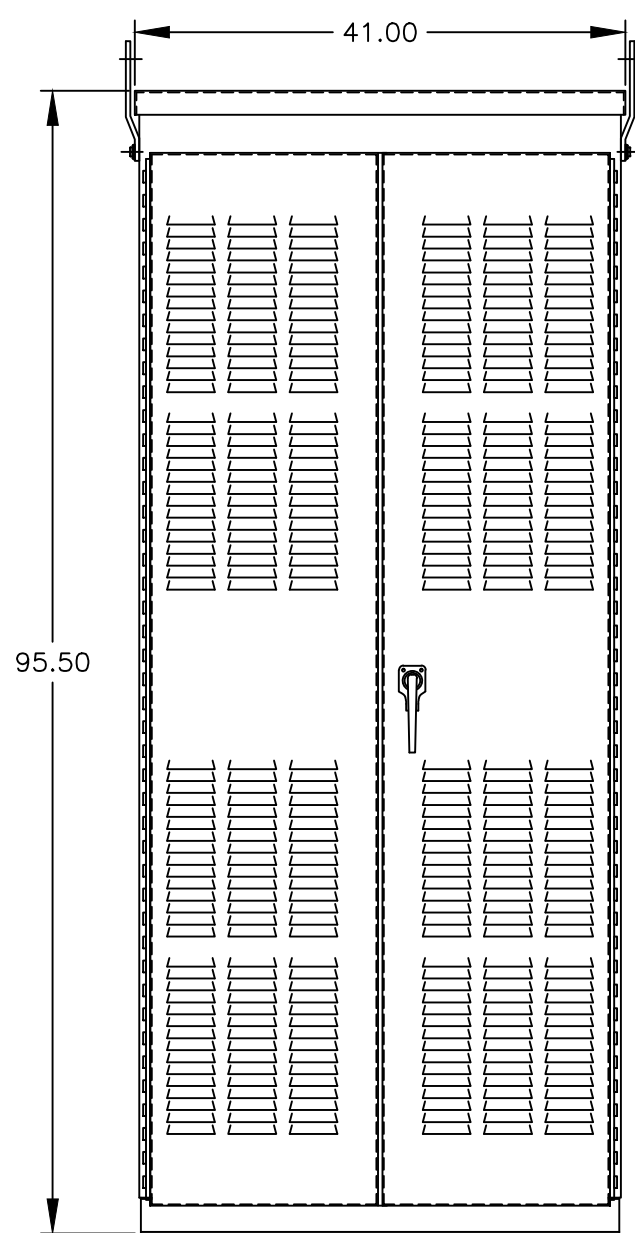
- SUPPLIED WITH STANDARD MECHANICAL (SCREW TYPE) LUGS .
SOURCE 1: (10) 1/0 AWG - 600MCM PER PHASE & NEUTRAL
LOAD: (10) 1/0 AWG - 600MCM PER PHASE & NEUTRAL
SOURCE 2: (10) 1/0 AWG - 600MCM PER PHASE & NEUTRAL
GROUND: (30) 1/0 -750MCM
 - SUITABLE WIRE BENDING SPACE IS PROVIDED AS PER THE NEC
- OPTIONAL LUGS MAY BE SUPPLIED.

CIRCUIT BREAKER: ITEM 52U

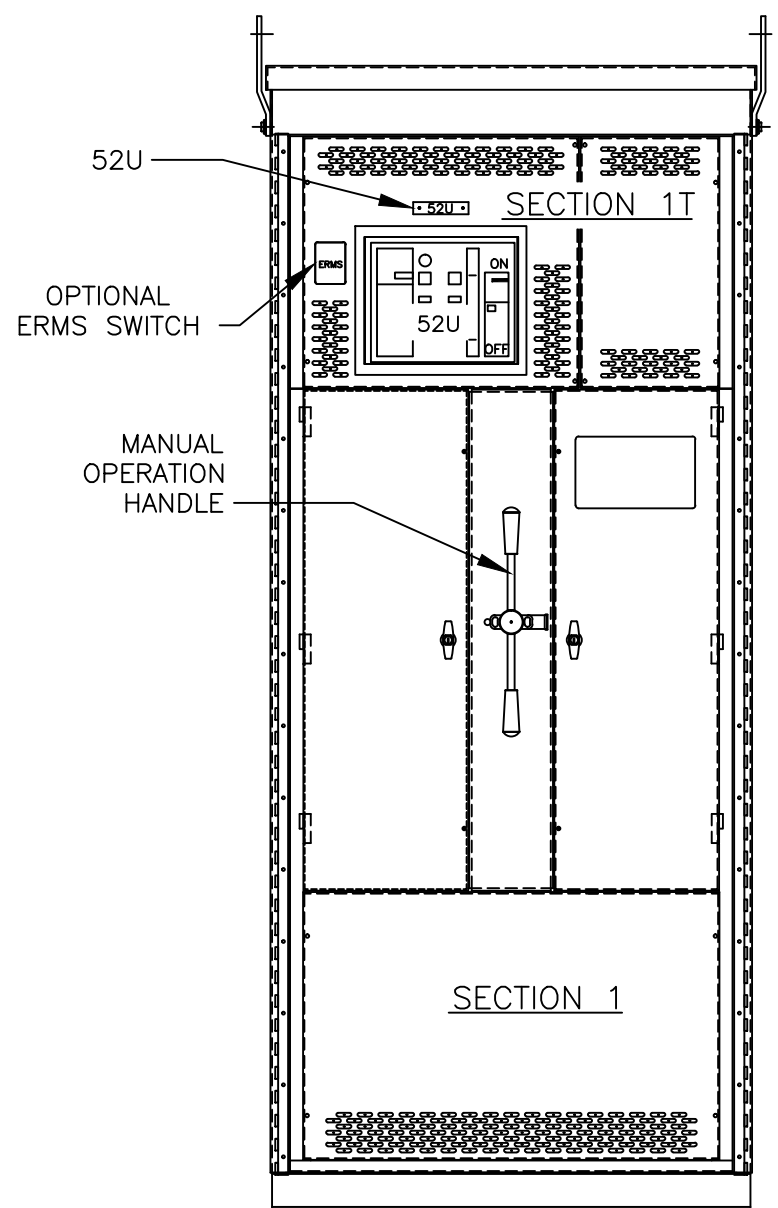
- SQUARE "D" 100% RATED, TYPE 'NW', 3000AF/3000AT OR 2500AF/2500AT STATIONARY MOUNTED, MANUALLY OPERATED, WITH LONG DELAY, SHORT DELAY, INSTANTANEOUS AND GROUND FAULT TRIP SETTINGS.
- OPTIONAL ENERGY REDUCTION MAINTENANCE SETTING (ERMS) SYSTEM MAY BE SUPPLIED.

C

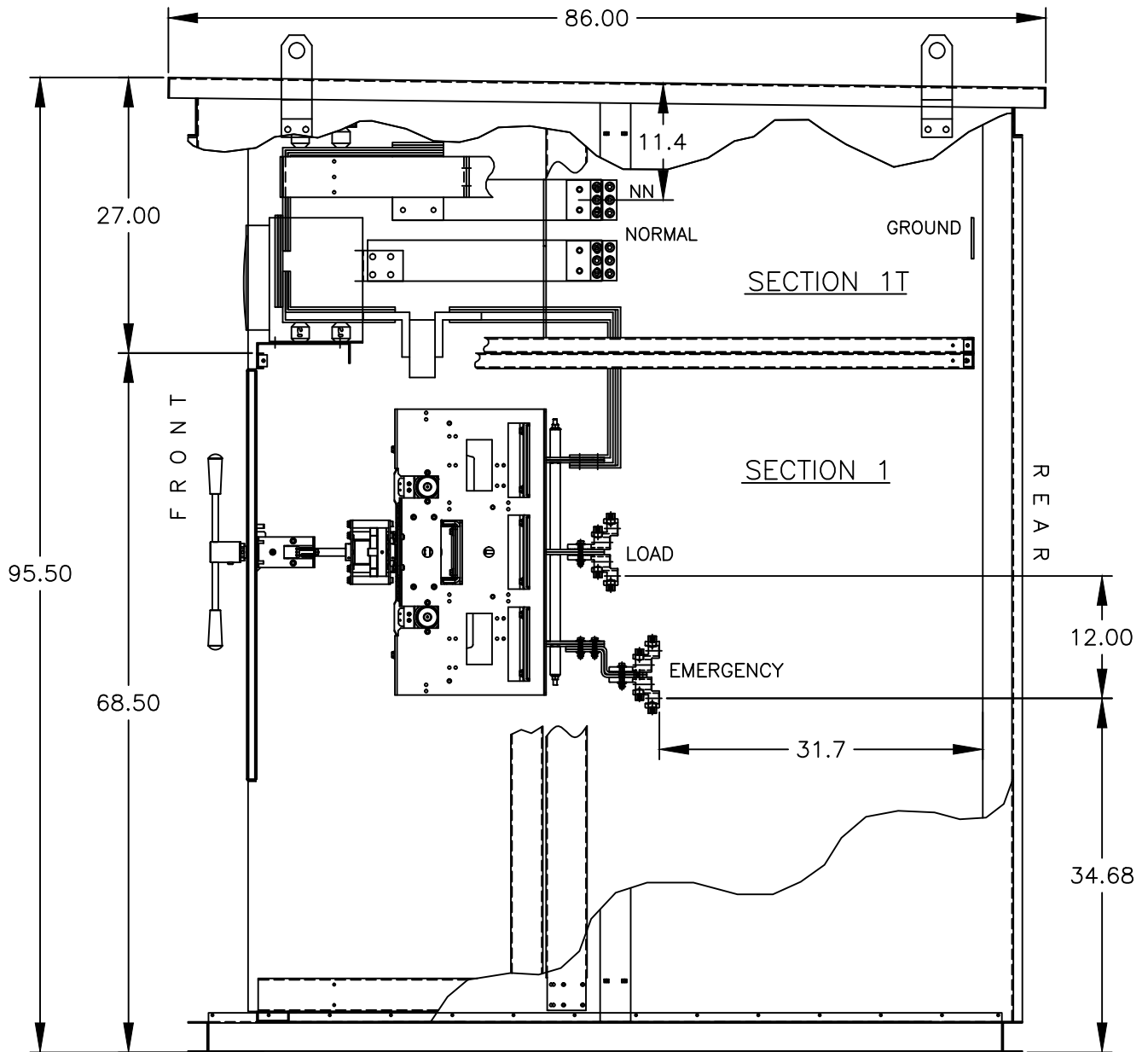
C



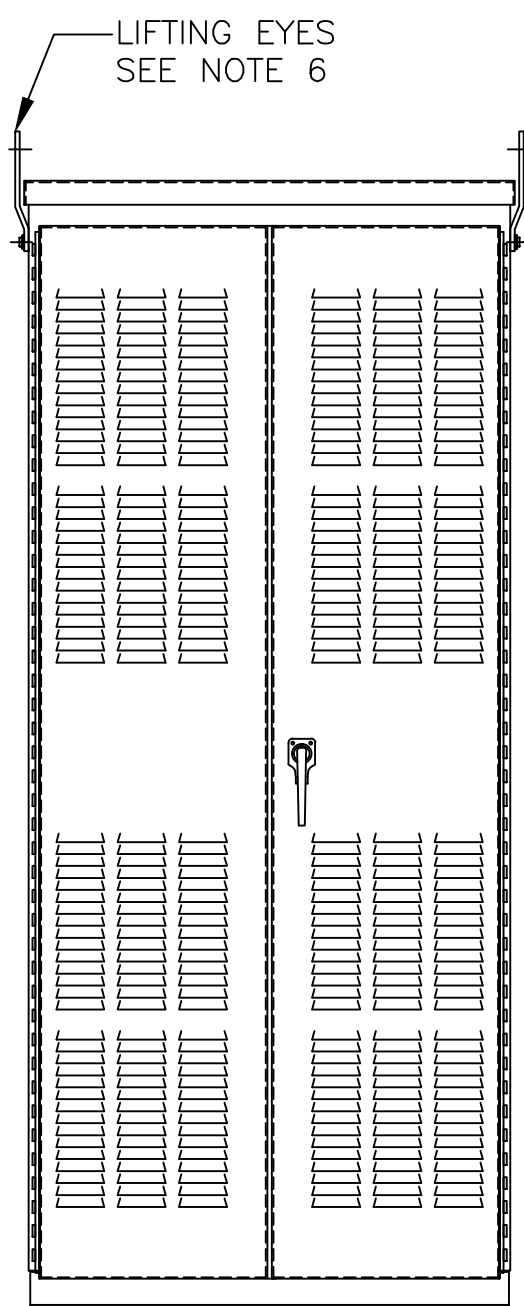
FRONT VIEW



FRONT VIEW
WITHOUT EXTERIOR DOORS



SIDE VIEW

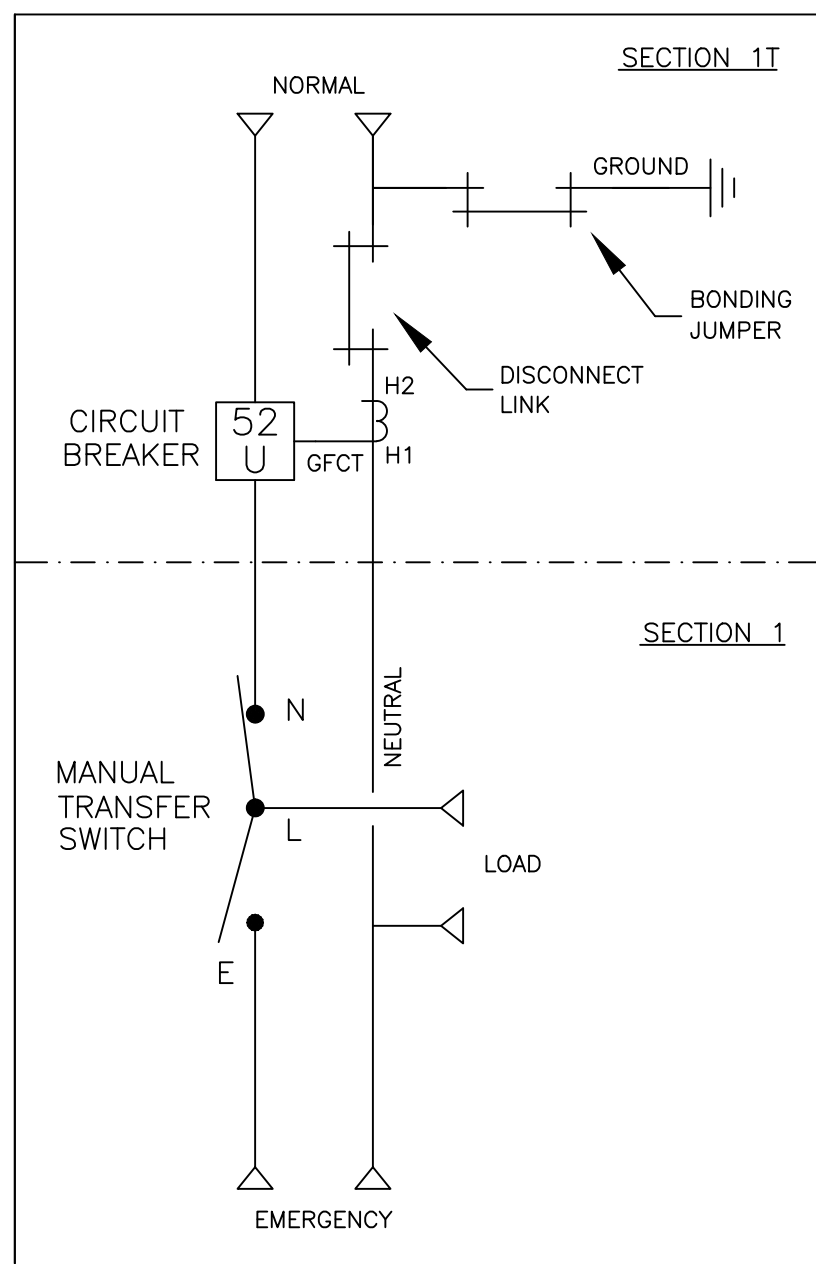


REAR VIEW

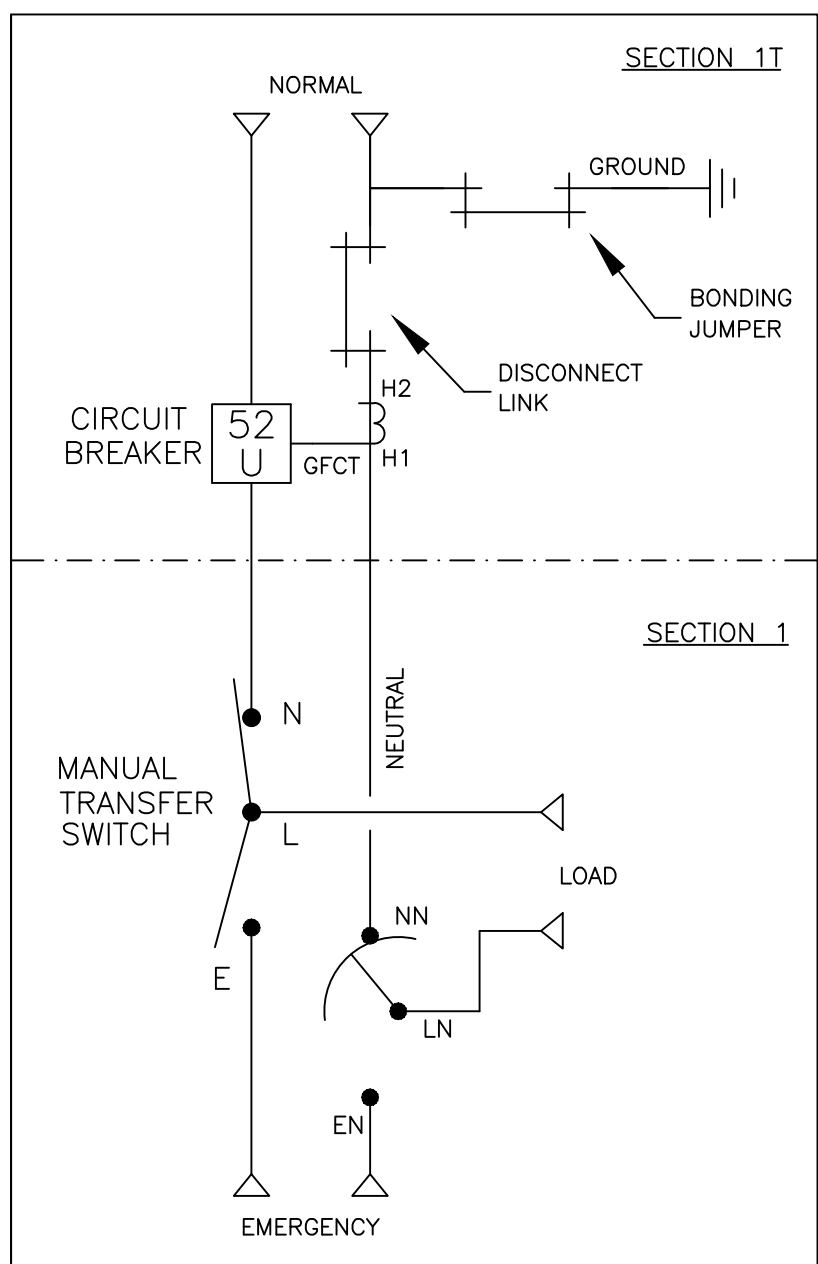
B

B

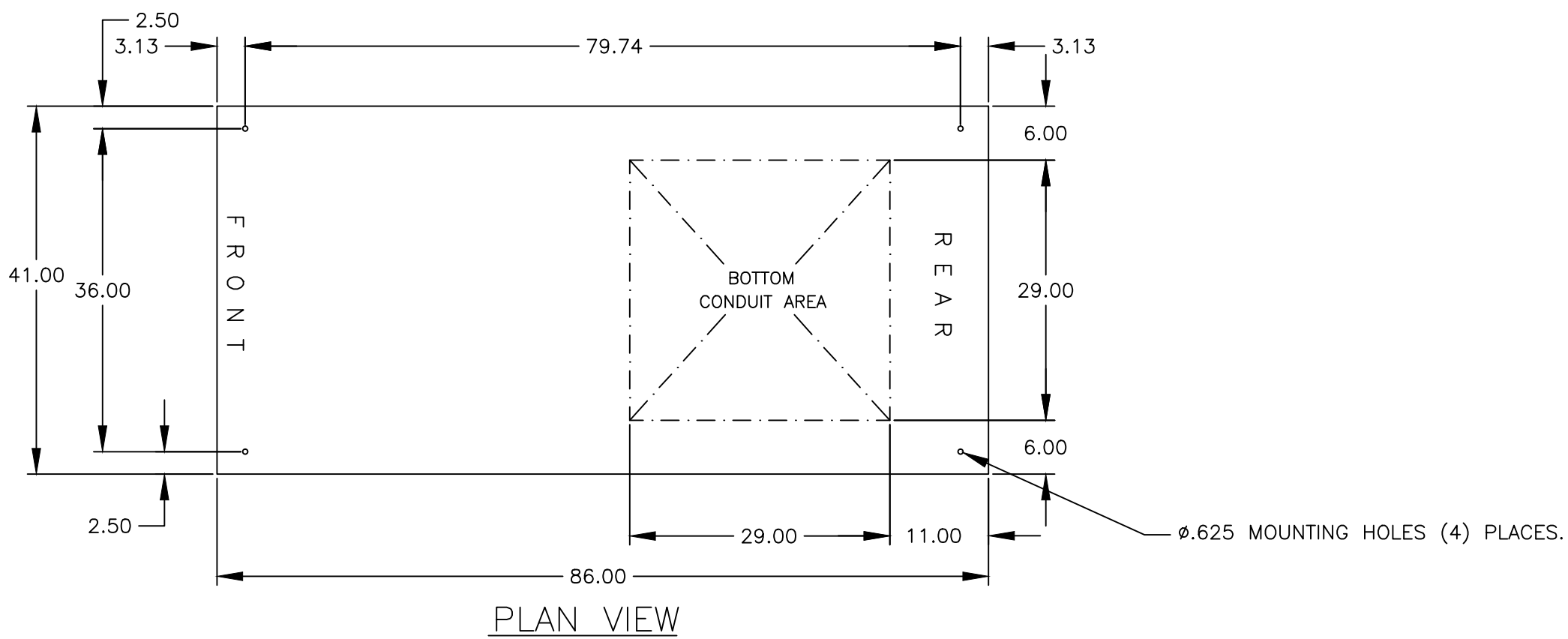
ONE LINE DIAGRAMS



(WITH SOLID NEUTRAL)



(WITH SWITCHED/OVERLAPPING NEUTRAL)



PLAN VIEW

A

A

PROJECT NAME:		REV. TO SHEET	ECN NO.	BY	APP.	DATE
OUTLINE		MOUNTING				
GMUS 2500A - 3000A, NW SERVICE ENTRANCE BREAKER ON NORMAL.						
TYPE 3R/3RX 96 X 41 X 86						
DRAWN BY	BCG	DATE	11-06-18	MANUFACTURING TOLERANCES TO BE IN ACCORDANCE WITH ASCO PROCEDURE MP-1-003. FOR PLASTIC PARTS SEE MP-1-005	ASSEM. REF. NO.	COMPUTER GENERATED DRAWING
CHECKED	RN			PROPERTY OF ASCO POWER TECHNOLOGIES, USE PERMITTED FOR OUR WORK ONLY. ALL RIGHTS OF DESIGN OR INVENTION ARE RESERVED.		SCALE 1/16" = 1" SIZE DS
PROJECT APPROVAL						DWG. NO. 977109-001
FINAL APPROVAL						DRAWING A REV. ECN NO. 277643 SHEET 1 OF 1

ASCOASCO POWER TECHNOLOGIES, L.P.
FLORHAM PARK, NEW JERSEY 07932 U.S.A.