

D

C

B

A


D

C

B

A

GENERAL NOTES

1. TYPE 1 ENCLOSURE. FREE STANDING. FLOOR MOUNTED. CODE GAUGE STEEL.
2. DOORS HAVE LOCKABLE HANDLES WITH COMMON KEYING AND CAPTIVE SCREWS.
3. FINISH: ANSI 61 GRAY POLYESTER SEMI GLOSS ELECTROSTATIC POWDER.
4. RECOMMENDED CLEARANCES:
FRONT: 38.00 INCHES
5. ALL BUS IS SILVER-PLATED COPPER, BASED ON 1000A PER SQ. IN. DENSITY.
6. A FULL RATED NEUTRAL CONNECTION FOR EACH SOURCE AND THE LOAD IS OPTIONAL.
WHEN PROVIDED IT IS AS SPECIFIED BY THE CATALOG NO.
A. SOLID (COPPER BUS) NEUTRAL
B. SWITCH (COPPER BUS) NEUTRAL.
7. DESIGNED FOR FRONT ACCESS.
8. FOR SPECIFIED TRANSFER SWITCH, REFER TO OPERATOR'S MANUAL PROVIDED WITH UNIT.
9. SECTION 1 & SECTION 1T SHIP AS 1 UNIT.
10.  CENTER OF GRAVITY.
11. APPROXIMATE WEIGHT: 650 LBS

SPECIFICATIONS

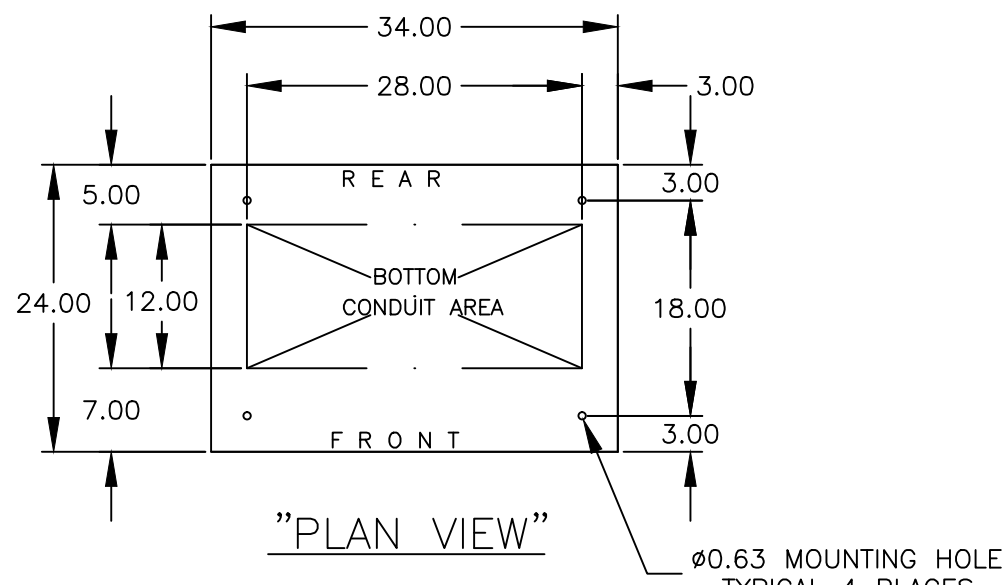
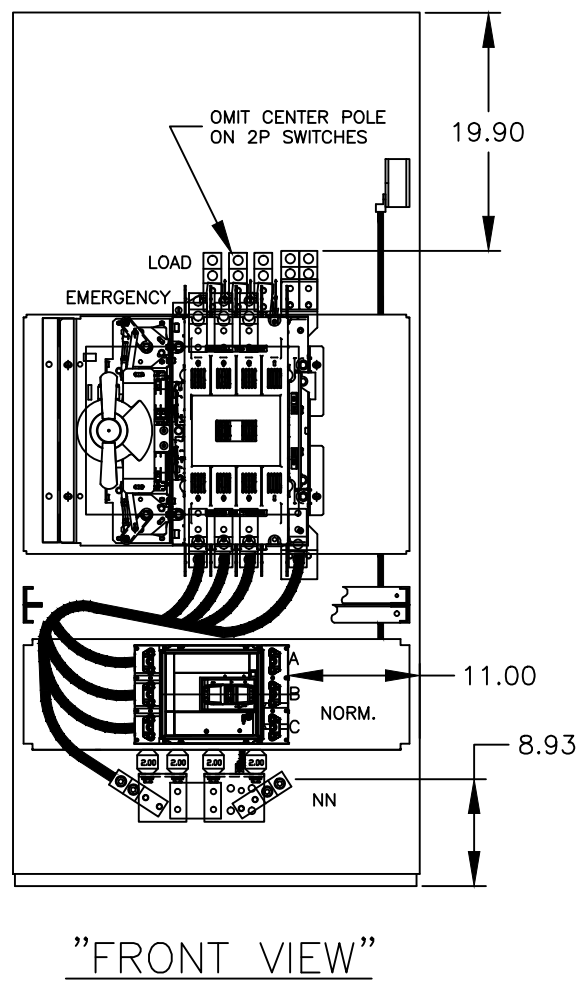
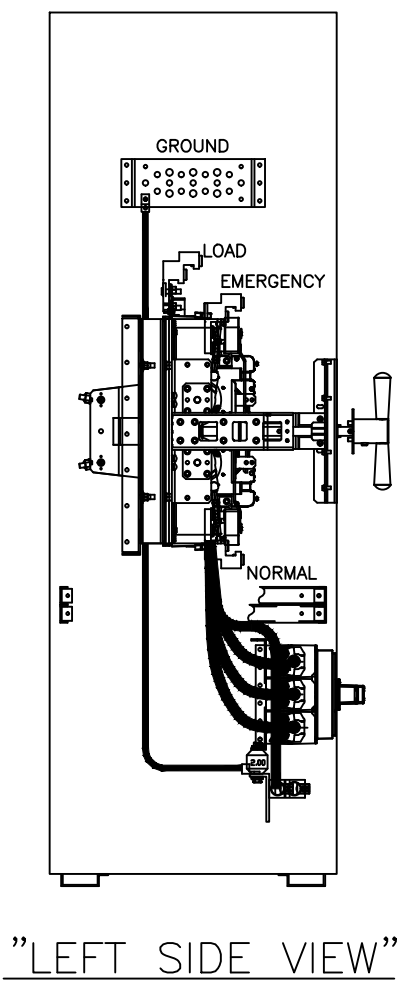
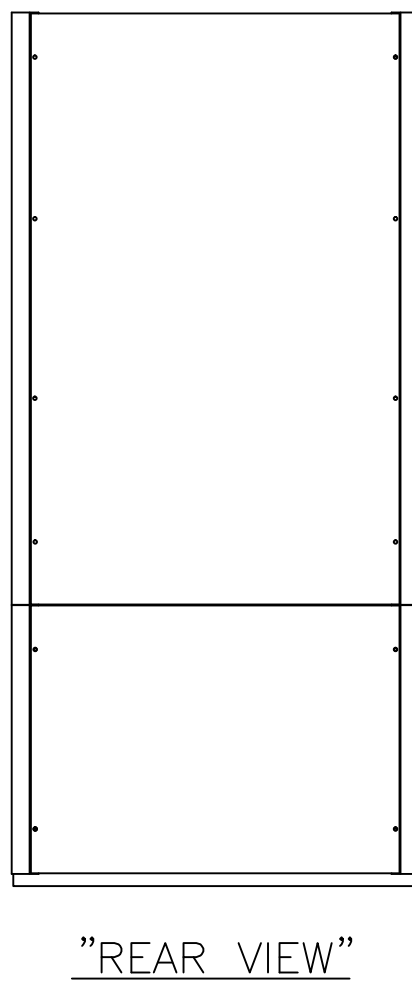
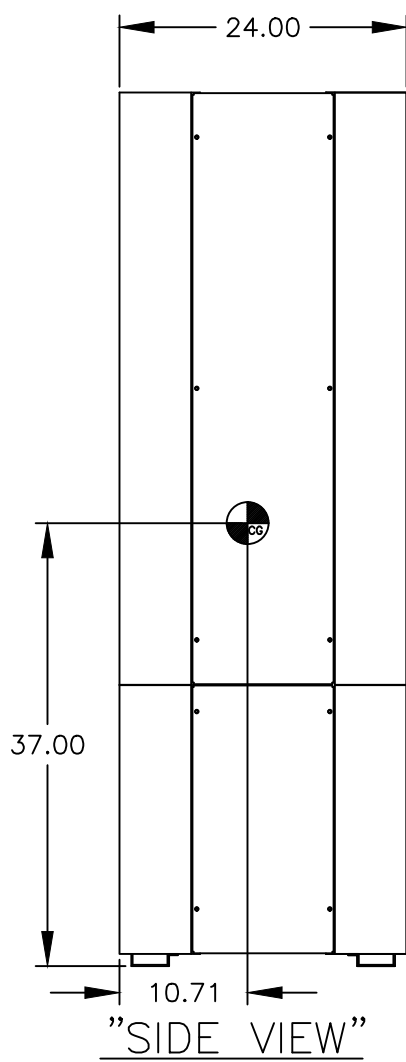
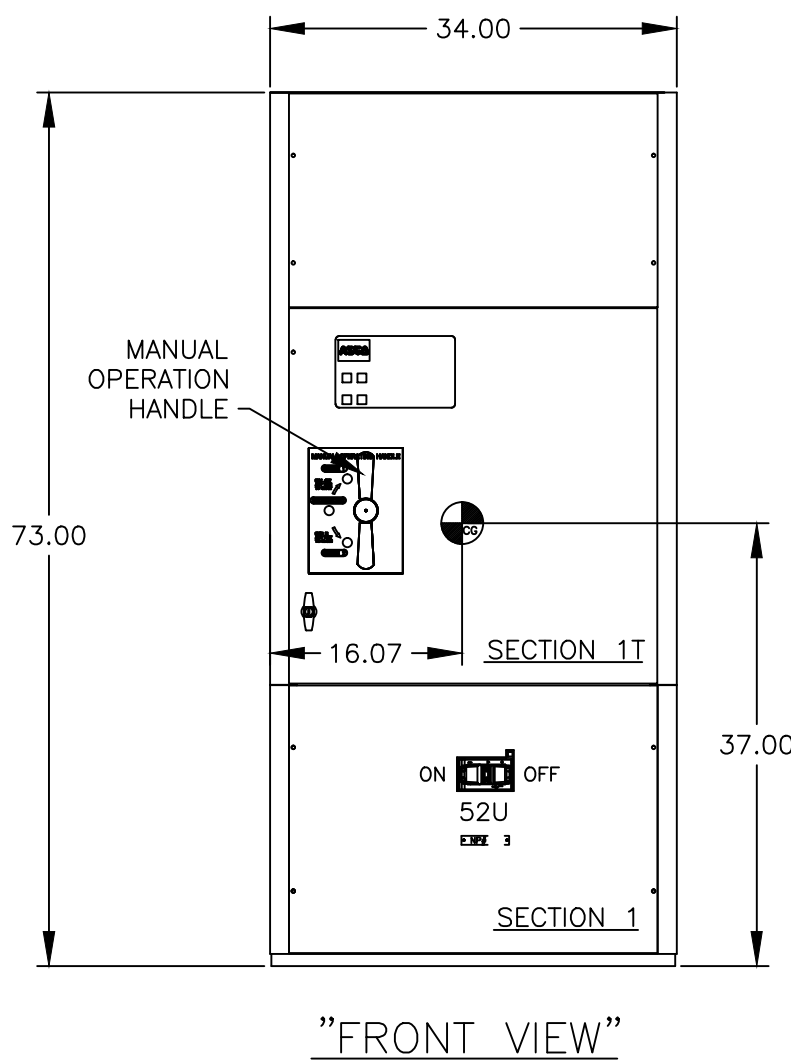
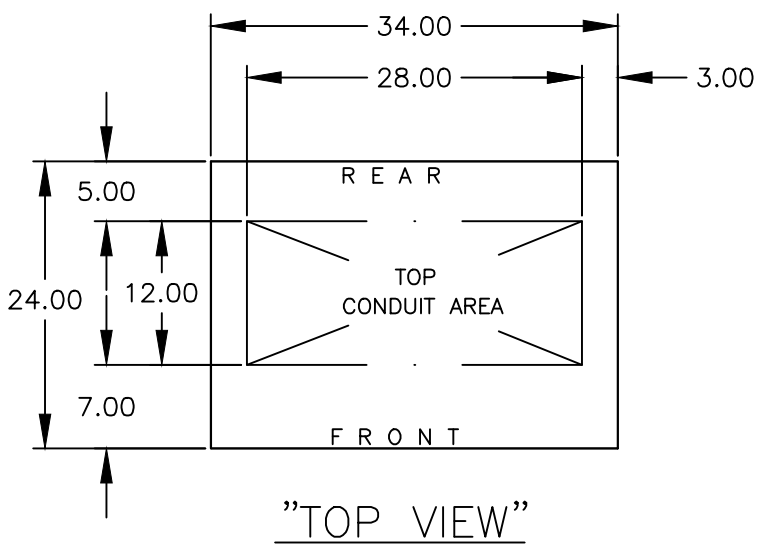
1. SYSTEM RATING: 450 AMPS, 500 AMPS, 600 AMPS, 3Ø, 4W OR 1Ø, 3W.
SHORT CIRCUIT RATING- SHORT CIRCUIT RATING- 50,000 RMS SYM AMPERES @ 480V
THE EMERGENCY SOURCE INPUT MUST BE PROTECTED BY A REMOTE OVERCURRENT PROTECTION DEVICE AS LISTED ON THE MARKINGS ON THE TRANSFER SWITCH.
2. NEUTRAL BUS: 100% RATED.
3. GROUND BUS: 20% RATED.
4. APPLICABLE LABELS: U.L. 891- SUITABLE ONLY FOR USE AS SERVICE EQUIPMENT.

TERMINATIONS 450-600 AMPS

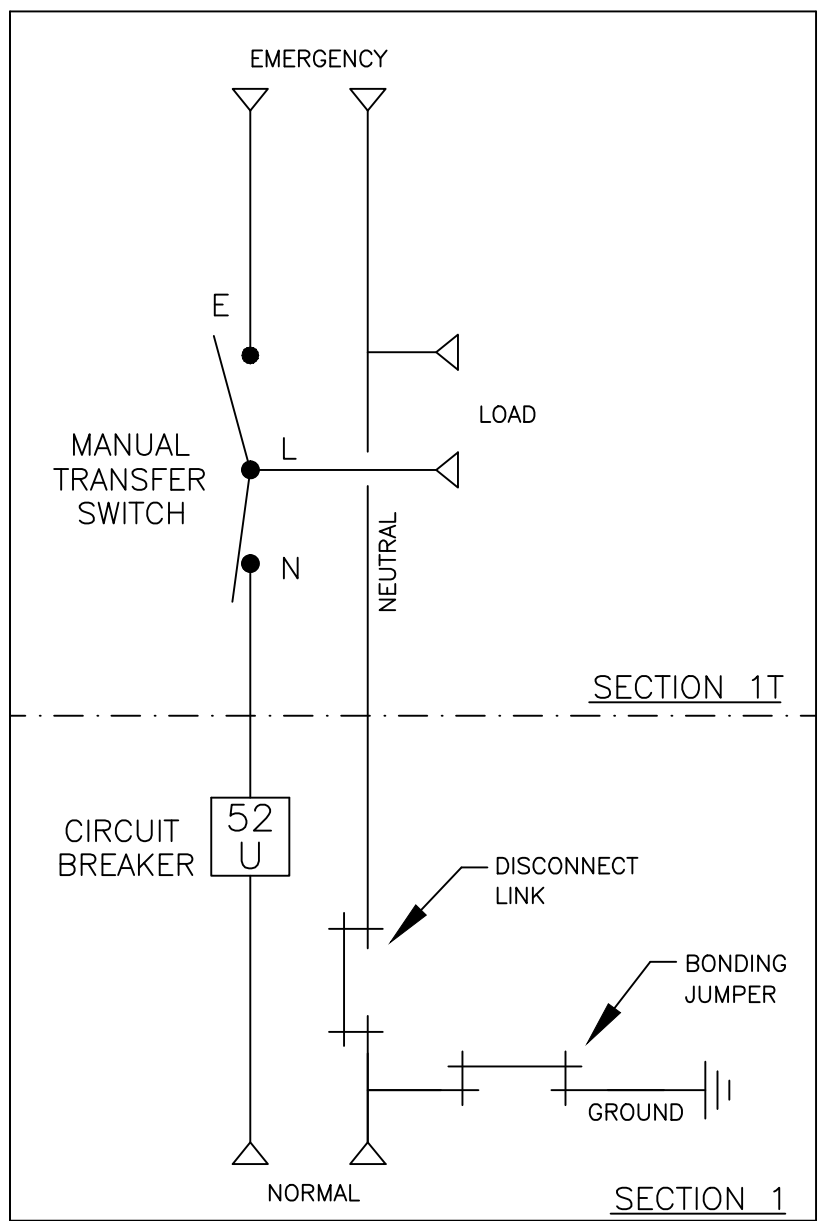
1. SUPPLIED WITH STANDARD MECHANICAL (SCREW TYPE) LUGS .
NORMAL: (2) 3/0 - 500MCM PER PHASE & NEUTRAL
LOAD: (2) #2 - 600MCM PER PHASE & NEUTRAL
EMERGENCY: (2) #2 - 600MCM PER PHASE & NEUTRAL
GROUND: (6) #2 - 600MCM
SUITABLE WIRE BENDING SPACE IS PROVIDED AS PER THE NEC
2. OPTIONAL LUGS MAY BE SUPPLIED.

CIRCUIT BREAKER: ITEM 52U

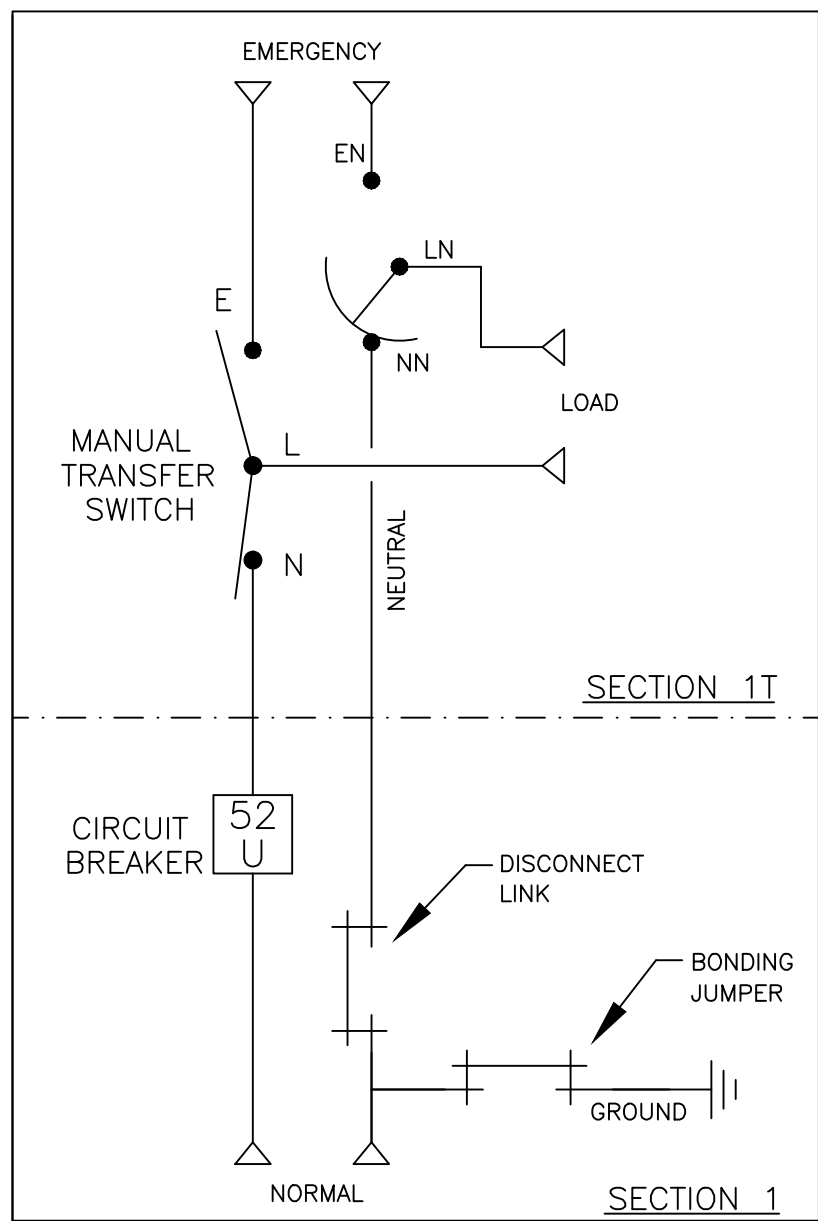
SQUARE "D" 80% RATED, TYPE 'MJL', 800AF/450AT, 800AF/500AT, 800AF/600AT
MOLDED CASE, ELECTRONIC TRIP.



ONE LINE DIAGRAMS



(WITH SOLID NEUTRAL)



(WITH SWITCHED NEUTRAL)

PROJECT NAME:				268937		SV	RN	02-13-18
REV. TO SHEET				ECN NO.		BY	APP.	DATE
NEW ISSUE								
OUTLINE				MOUNTING				
JMUS 450A-600A, SLD/SW NEUTRAL, MJL SE BREAKER ON NORMAL								
TYPE 1 73 X 34 X 24 SECTION 1 & 1T				THIRD ANGLE PROJECTION				
DRAWN BY	SV	DATE	02-12-18	MANUFACTURING TOLERANCES TO BE IN ACCORDANCE WITH ASCO PROCEDURE MP-1-003. FOR PLASTIC PARTS SEE MP-1-005				ASSEM. REF. NO.
CHECKED	RN				PROPERTY OF ASCO POWER TECHNOLOGIES. USE PERMITTED FOR OUR WORK ONLY. ALL RIGHTS OF DESIGN OR INVENTION ARE RESERVED.			
PROJECT APPROVAL				SCALE 1/16" = 1" SIZE DS				
FINAL APPROVAL				DWG. NO. 977103-001				
ASCO® ASCO POWER TECHNOLOGIES, L.P. FLORHAM PARK, NEW JERSEY 07932 U.S.A.				DRAWING REV.		ECN NO.	268937	SHEET 1 OF 1