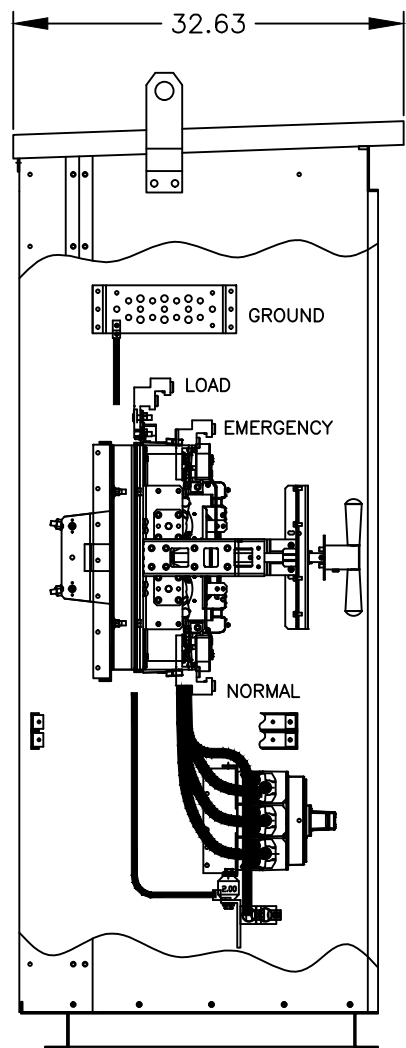
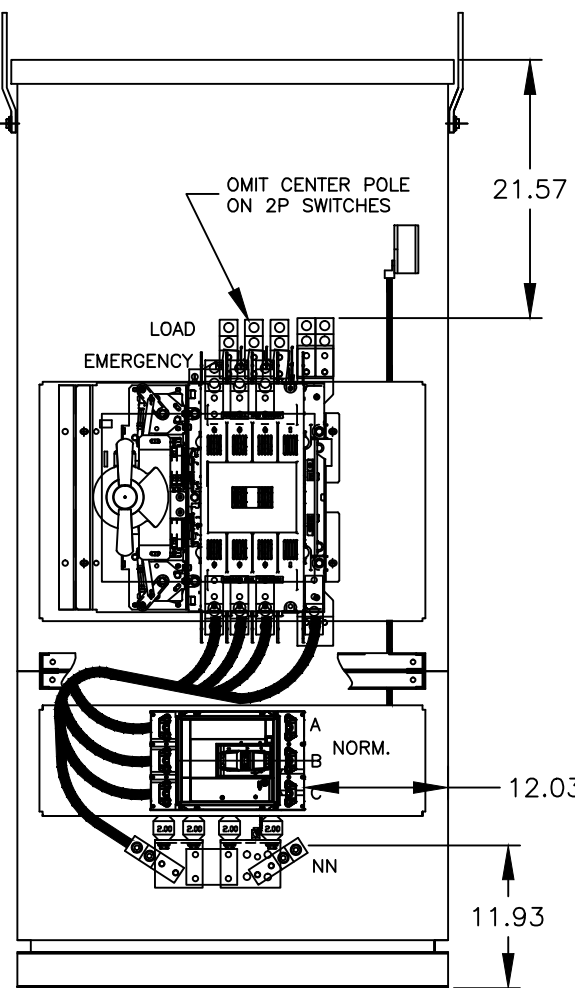


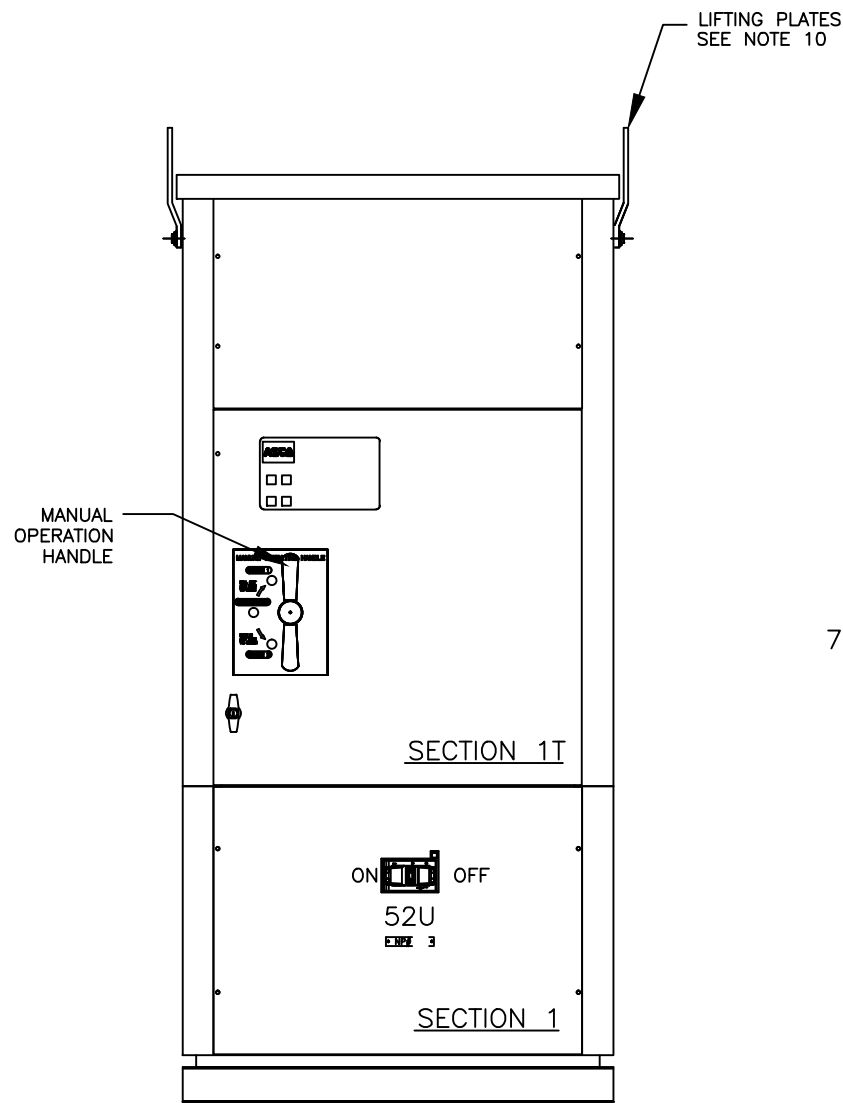
"TOP VIEW"



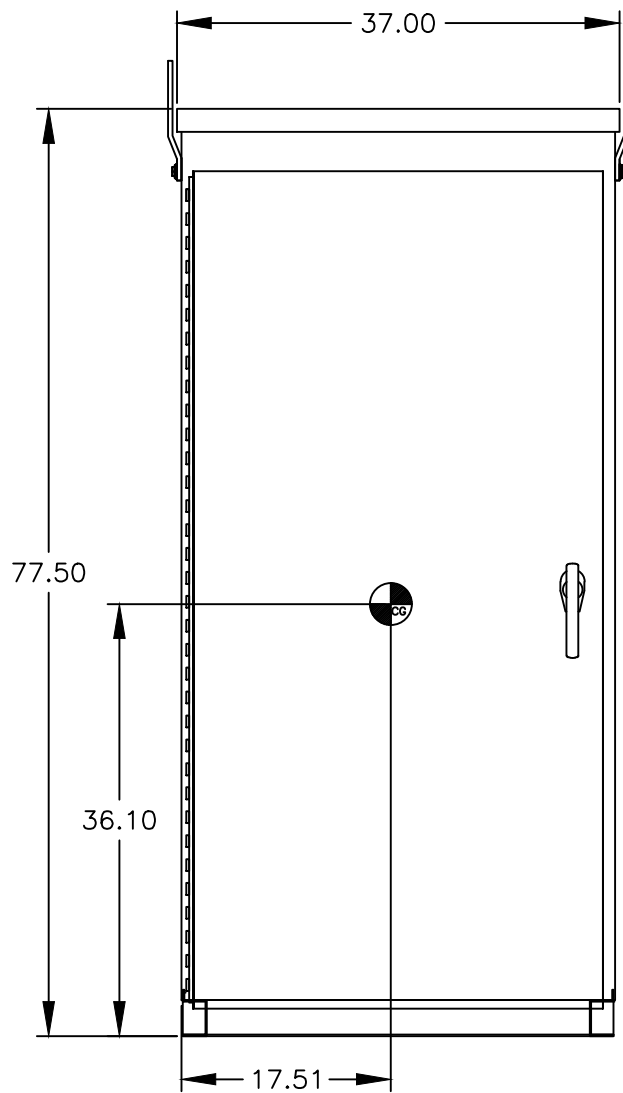
"LEFT SIDE VIEW"



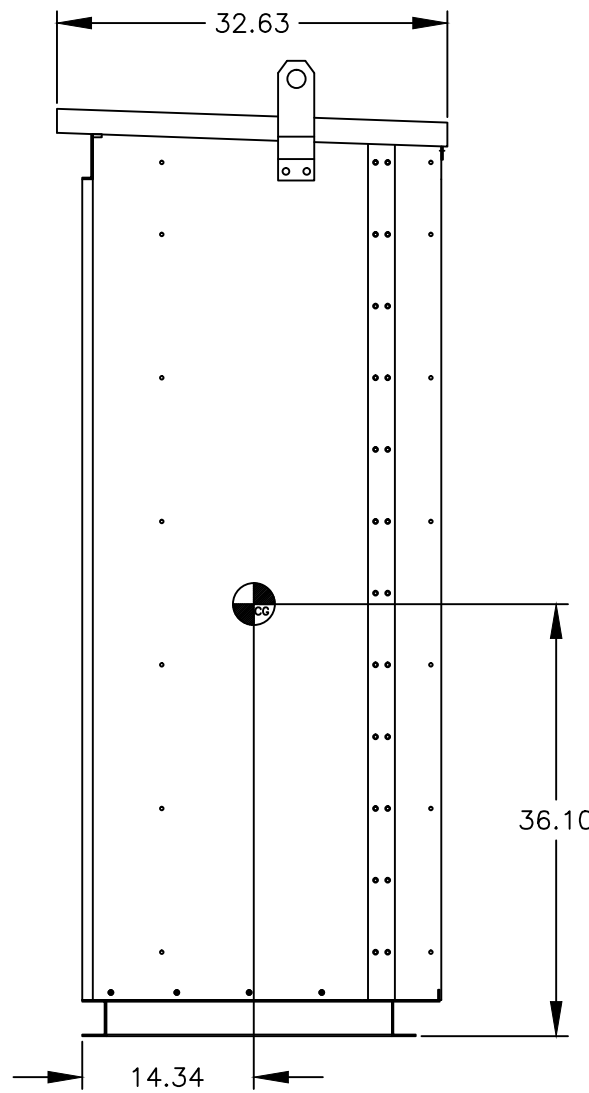
"FRONT VIEW
WITHOUT DOOR"



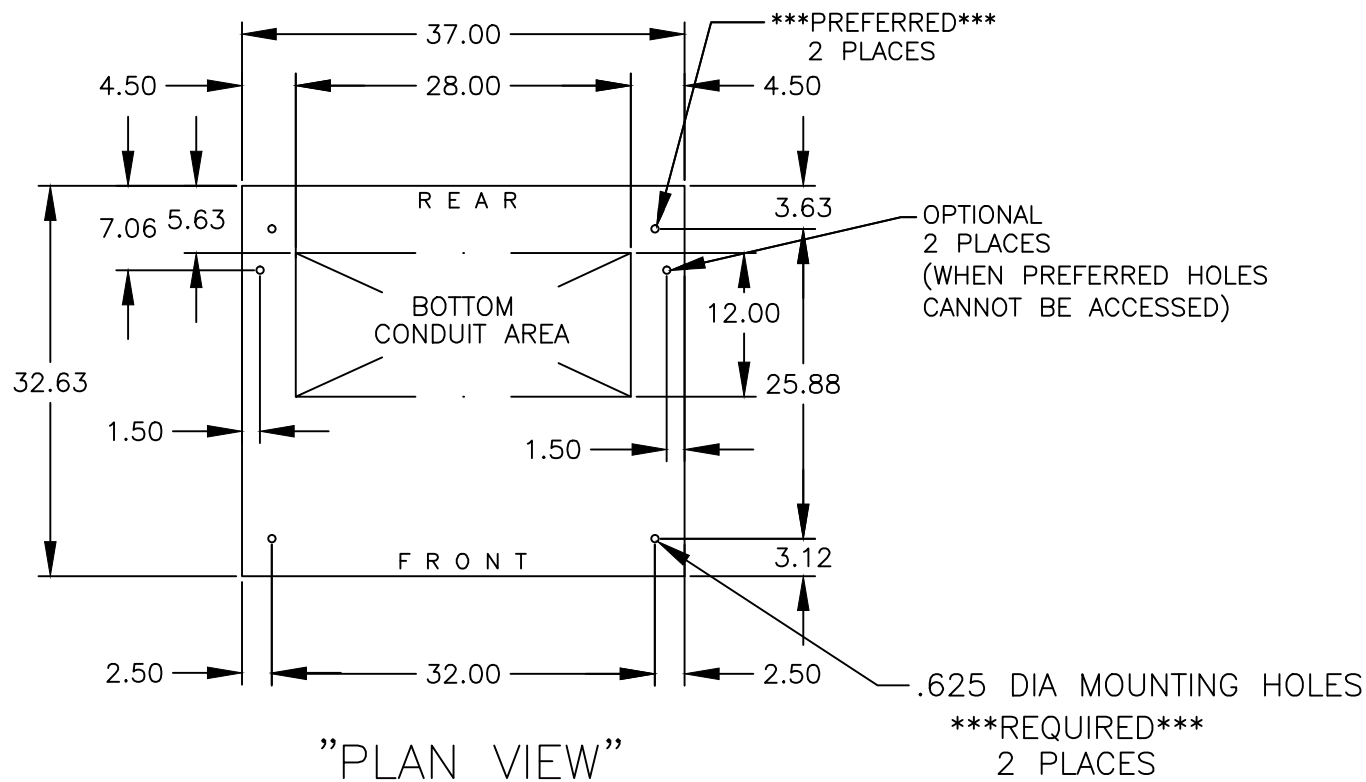
"FRONT VIEW"
W/O EXTERIOR DOOR



"FRONT VIEW"



"RIGHT SIDE VIEW"



"PLAN VIEW"

GENERAL NOTES

- TYPE 3R ENCLOSURE. FREE STANDING. FLOOR MOUNTED. CODE GAUGE STEEL.
- EXTERIOR DOORS HAVE PADLOCKABLE HANDLE WITH 3 POINT LATCH.
- FINISH: TYPE 3R: ANSI 61 GRAY POLYESTER SEMI GLOSS ELECTROSTATIC POWDER.
TYPE 3RX(R) – EXTERIOR CONSTRUCTED OF CODE GAUGE TYPE 304 STAINLESS STEEL.
TYPE 3RX(S) – EXTERIOR CONSTRUCTED OF CODE GAUGE TYPE 316 STAINLESS STEEL
- RECOMMENDED CLEARANCES:
FRONT: 38.00 INCHES
- ALL BUS IS SILVER-PLATED COPPER, BASED ON 1000A PER SQ. IN. DENSITY.
- A FULL RATED NEUTRAL CONNECTION FOR EACH SOURCE AND THE LOAD IS OPTIONAL.
WHEN PROVIDED IT IS AS SPECIFIED BY THE CATALOG NO.
A. SOLID (COPPER BUS) NEUTRAL
B. SWITCH (COPPER BUS) NEUTRAL.
- DESIGNED FOR FRONT ACCESS.
- FOR SPECIFIED TRANSFER SWITCH, REFER TO OPERATOR'S MANUAL PROVIDED WITH UNIT.
- SECTION 1 & SECTION 1T SHIP AS 1 UNIT.
- LIFTING PLATES: SECTIONS ARE SUPPLIED WITH LIFTING PLATES.
INSPECT PLATES FOR DAMAGE AND TORQUE BOLTS TO 45 FT LBS BEFORE USE.
REFER TO ANSI/NEMA PB 2.1 FOR PROPER HANDLING OF EQUIPMENT.
AFTER INSTALLATION OF SECTION, REMOVE LIFTING PLATES.
REINSTALL BOLTS INTO EXTERIOR HOLES AND TORQUE TO APROX. 20 FT LBS.
- CENTER OF GRAVITY.
- APPROXIMATE WEIGHT: 1060 LBS

SPECIFICATIONS

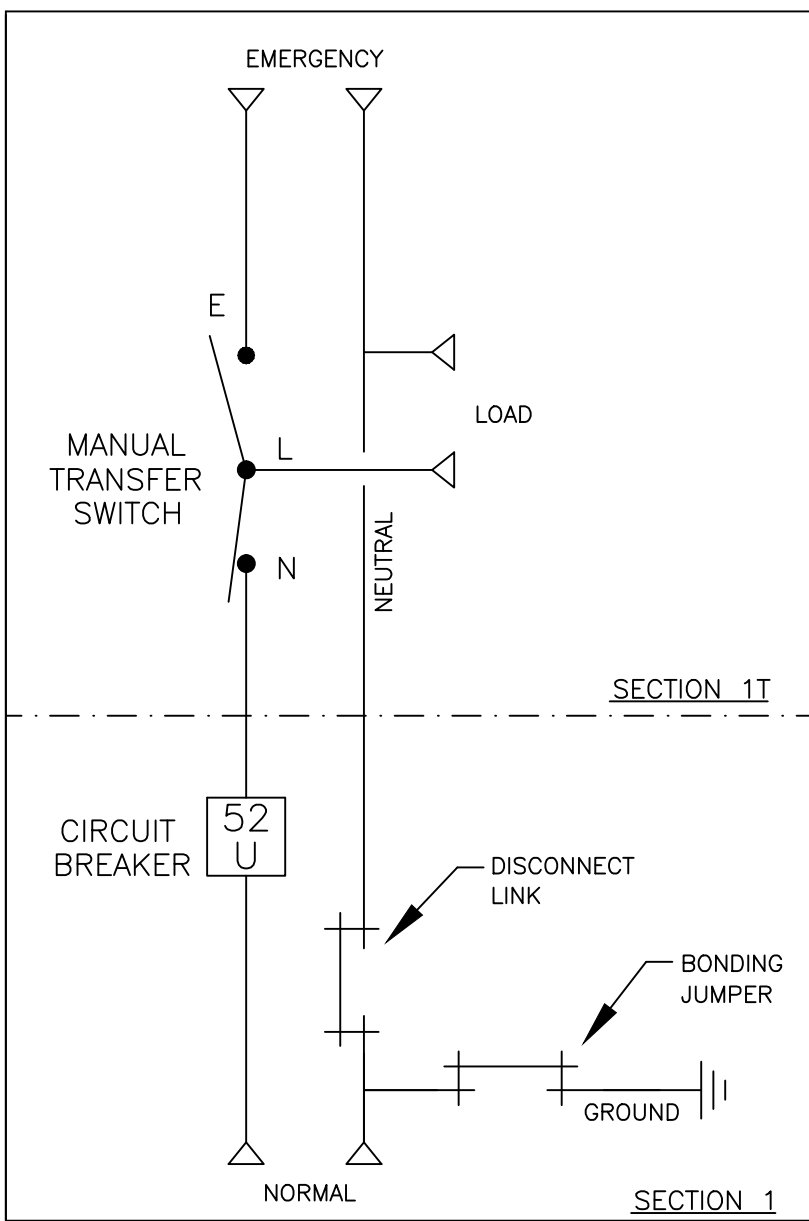
- SYSTEM RATING: 450 AMPS, 500 AMPS, 600 AMPS, 3 ϕ , 4W OR 1 ϕ , 3W.
SHORT CIRCUIT RATING– SHORT CIRCUIT RATING– 50,000 RMS SYM AMPERES @ 480V
THE EMERGENCY SOURCE INPUT MUST BE PROTECTED BY A REMOTE OVERCURRENT PROTECTION DEVICE AS LISTED ON THE MARKINGS ON THE TRANSFER SWITCH.
- NEUTRAL BUS: 100% RATED.
- GROUND BUS: 20% RATED.
- APPLICABLE LABELS: U.L. 891– SUITABLE ONLY FOR USE AS SERVICE EQUIPMENT.

TERMINATIONS 450–600 AMPS

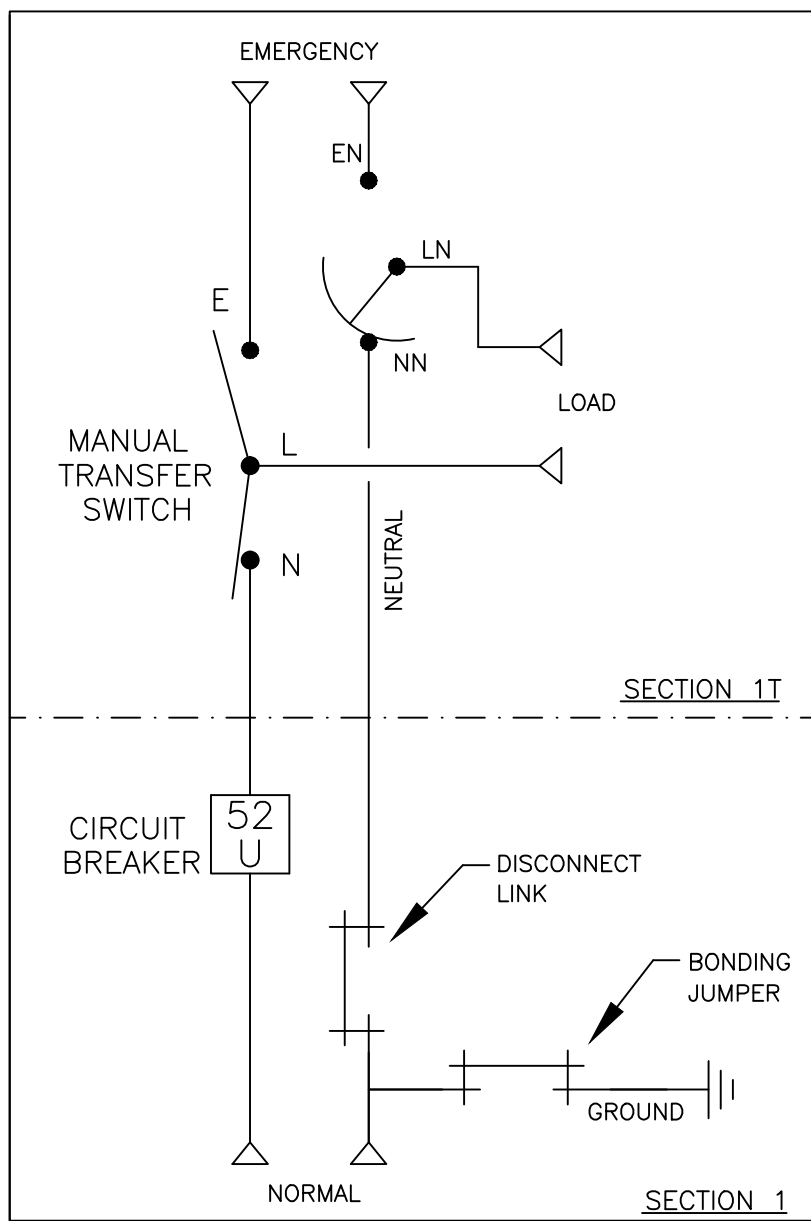
- SUPPLIED WITH STANDARD MECHANICAL (SCREW TYPE) LUGS .
NORMAL: (2) 3/0 – 500MCM PER PHASE & NEUTRAL
LOAD: (2) #2 – 600MCM PER PHASE & NEUTRAL
EMERGENCY: (2) #2 – 600MCM PER PHASE & NEUTRAL
GROUND: (6) #2 – 600MCM
SUITABLE WIRE BENDING SPACE IS PROVIDED AS PER THE NEC
- OPTIONAL LUGS MAY BE SUPPLIED.

CIRCUIT BREAKER: ITEM 52U

SQUARE "D" 80% RATED, TYPE 'MJL', 800AF/450AT, 800AF/500AT, 800AF/600AT
MOLDED CASE, ELECTRONIC TRIP.



(WITH SOLID NEUTRAL)



(WITH SWITCHED NEUTRAL)

PROJECT NAME:		268937	SV	RN	02-13-18
REV. TO SHEET		ECN NO.	BY	APP.	DATE
OUTLINE		MOUNTING			
JMUS 450A-600A, SLD/SW NEUTRAL, MJL SE BREAKER ON NORMAL		TYPE 3R/3RX 78 X 37 X 33 SECTION 1 & 1T			
DRAWN BY	SV	DATE	02-12-18	MANUFACTURING TOLERANCES TO BE IN ACCORDANCE WITH ASCO PROCEDURE MP-1-003. FOR PLASTIC PARTS SEE MP-1-005	ASSEM. REF. NO.
CHECKED	RN			PROPERTY OF ASCO POWER TECHNOLOGIES. USE PERMITTED FOR OUR WORK ONLY. ALL RIGHTS OF DESIGN OR INVENTION ARE RESERVED.	COMPUTER GENERATED DRAWING
PROJECT APPROVAL					SCALE 1/16" = 1" SIZE DS
FINAL APPROVAL					DWG. NO. 977103-004
		ASCOTM ASCO POWER TECHNOLOGIES, L.P. FLORHAM PARK, NEW JERSEY 07932 U.S.A.		DRAWING REV.	ECN NO. 268937 SHEET 1 OF 1