

# Trident 1250

Digital Load Bank with Data Acquisition  
600KW - 1250KW



## Overview

- Integrated design, load module, trailer, reels, cam-lock style connections, digital control
- High capacity, 600-1250kw
- Dual voltage: 208-240/416-480vAC
- Digital load control, 5 kw resolution
- Touchscreen operator interface
- Remote and/or local control
- Data acquisition and recording
- Network units to form large systems

## Description

The Simplex Trident-1250 is a fully integrated design trailer load bank including:

- Resistive Load Bank, 600-1250kw
- Heavy duty, purpose built, tandem axle highway trailer
- Cables reels
- CAM-LOCK style connection panel
- Storage locker
- Integrated digital controller suitable for local and/or remote control

The Trident Trailer Load Bank is ideal for field testing in the performance of start-up and commissioning activities, service contracts and engine generator maintenance. The Trident is the perfect addition to rental fleets and is

in widespread use with Simplex' sister Company, Simplex Onsite, providing nationwide load bank rentals.

Trident Load Bank Systems feature highly standardized digital controllers with data acquisition capability. Trident Load Banks can be networked to other Trident units or to any Simplex Load Bank (except Powerstar and Infinity product lines) for totalized, single point control and data acquisition. In fact, any number of Simplex load Banks can be networked to form large, integrated aggregate systems. Operator interface is via touchscreen. Load control is via screen keypad. All electrical values display on-screen and are capable of being recorded for future data retrieval.

The Trident family comprises load modules from 600-1250kw integrated with trailers, cable storage and connection accessories and digital controls. The Trident-1250 is a single load module product. The Trident 2500 is a two load module product, 1500-2500kw rated. Refer to the Trident 2500 Brochure for further details.

## Features

**NRTL Listed:** CSA-US or CSA-Canada.

**Digital Control:** PLC based control with 8-inch color TFT touchscreen interface. MODBUS over RS-485 network communication.

**Instrumentation:** Digital power transducer with Ethernet communication to digital controller. Data display on touchscreen. Data acquisition and recording.

**Load Elements:** Simplex "Powr-Web" chromium alloy, open wire, continuously supported, power resistor.

**Load Control:** 3-Pole contactors.

**Load Element Circuit Protection:** Branch circuit fuses. One set of fuses each 50KW branch. Fuses are current limiting type, 200KAIC, 600V.

**Cooling System:** 3-phase, direct-drive fan, 21,000 CFM.

**Malfunction Detection System:** Protection against fan failure, high exhaust air temperature, high intake air temperature, overvoltage and fan reversal. Exhaust air temperature displays on screen.

**Control Power Supply:** Dual voltage control power transformer with supply power switchable to internal (generator) or external.

**Touch Screen:** Easily removable from panel.

**Connection:** "Cam-Lock" type power connections.



# Trident 1250

Digital Load Bank with Data Acquisition

600KW - 1250KW • Page 2

# SIMPLEX®



## Capacity Detail

Model	KW (1.0pf)	FLA			KW DETAIL		
		240V	480V	240V/480V	208/416V	380V	240V, 1-ph*
Trident 600	600	1444	722	600	450	376	300
Trident 750	750	1806	903	750	563	470	300
Trident 800	800	1926	963	800	600	500	300
Trident 900	900	2166	1083	900	675	564	300
Trident 1000	1000	2406	1203	1000	750	627	300
Trident 1250	1250	3008	1504	1250	938	783	300

\*Requires external 3-phase fan/control power. Capacity limited to 1250 FLA.

**Voltage:** Dual Voltage: 240/480V AC, 3-phase Operational at any voltage to 480V AC maximum, single or 3-phase

**Optional Voltages:** Instead of 240/480v dual voltage:

- a. Any 50hz or 60hz single voltage to 690v
- b. 600v, single voltage
- c. 600/480v, dual voltage
- d. 600/300v, dual voltage
- e. 480/416v, dual voltage
- f. 208/416v, dual voltage

**Frequency:** 50, 60 Hertz standard

**Connection:** 3-wire plus ground

**Time Rating:** Continuous

**Ambient Air Temperature:** 120°F max

**Airflow:** 21,000 CFM

**Temperature Rise:** 180°F nominal

**Control/Fan Power:**

- 230/460V, 3-phase, 60 Hertz
- 190/380V, 3-phase, 50 Hertz
- Switchable internal (generator)-external
- External fan/control power requirements: 240/480vAC, 3-phase, 60 Hertz, 40 / 20 amps service (7.5HP motor)
- 230/460-115V control power transformer internal to Load Bank.

**Net Weight:** Approx. 9500 lbs., including load module, trailer, three reels, 2000' 4/0 cable, cam-lock style connectors

## Digital Load Control

Nominal 5.0 kw resolution: direct enter any load value and controller will apply load within nominal 5kw resolution

## Digital Load Calibration Versus Voltage

Controller automatically calibrates loads for reduced voltage operation.

**Standard Cable Reels**



**Cam-Lock Cable Style  
Connection Panel**



**Standard Trident  
Remoteable Digital  
Touchscreen Controller**





# Trident 1250

Digital Load Bank with Data Acquisition

600KW - 1250KW • Page 4

**SIMPLEX®**

## Trailers

Heavy-duty, purpose-built for the application, tandem axle trailer:

**Construction:** Structural steel chassis, steel deck, all welded, built to DOT specification, NTM DOT certification label

**Capacity:** 8,000-10,400 GVWR

**Axles:** Tandem

**Hitch:** 2-5/16" ball hitch OR 3" pintle ring

**Tires:** (4) 225/75R15, load range D

**Brakes:** Electric with breakaway system or hydraulic surge, mechanical parking brake

**Suspension:** Leaf springs

**Features:** Safety chains, DOT LED lighting with connector, reflectors, tie down rings, rear stabilizers, front lift jack, mud deflectors

**Standard Finish:** Dark gray polyurethane with epoxy primer.

**Optional Finishes:** Customer selected color. Undercoating. LINE-X overall protective coating. Hot dip galvanizing.



## Cable Connections

Cam-Lock style cable connectors behind hinged door. 4/0, 400A. Snap-back protective covers. Also available orange-brown-yellow.



## Cable Storage

Trident-1250 Trailer Load Banks normally supplied with 3 cable reels:

### Capacity:

- 900-feet x 4/0 (1" cable), perfect wrap
- 750-feet x 4/0 (1" cable), nominal wrap

### Standard Reel Features:

- Manual, gear driven, crank rewind
- Pinion brake
- 2" steel channel frame, powder coated

**Other Cable Storage Options:** Cable storage racks or totes.

## Cable Options

- 4/0, extra-flex, portable power cable
- Type W
- 2000v
- 90C EPDM insulation
- Polyester braid reinforcement between insulation and outer jacket
- 2062 strand copper
- "CAM-LOCK" type connector, each end, standard
- Crimp-on ring lugs on generator end option
- 5 foot "Pigtails" available with "CAM-LOCK" type connections on one end and opposite end lugged, bare or otherwise terminated

**Top Photo:** Optional 12 or 24vDC electric rewind reels with control box shown.

**Middle Photo:** Optional full enclosure with lockable doors for cable reels.

**Bottom Photo:** Optional cable storage locker in lieu of reels



# Trident 1250

Digital Load Bank with Data Acquisition  
600KW - 1250KW • Page 6

**SIMPLEX®**

## Digital Controller

Trident Load Banks are digitally controlled via PLC.

**Top Photo:** Standard Trident equipped with local, on-board, 8-inch Touchscreen operator interface behind hinged, lockable door. Fan/control power circuit breakers with internal/external interlock and control power circuit breakers are conveniently located on the control panel.

**Middle Photo:** Local operator interface is removable for remote operation.

**Bottom Photo:** Optional “suitcase style” remote controller, with Cat-5/Ethernet remote control cable.





## Digital Control and Data Acquisition System

PLC based digital control with 8-inch color TFT touchscreen operator interface.

### Functions

- Control power source and voltage level detection
- Malfunction detection and protection
- Direct access (keypad) load control
- Alternate mimic panel load control
- Basic automation of load control
- Field adjustable exhaust temperature limits with temperature display
- Built-in control from customer supplied computer

### Instrumentation

Digital power transducer to digital controller and meter displays on touchscreen:

- 3-phase voltage (each, L-L)
- 3-phase current (each line)
- Frequency
- KW

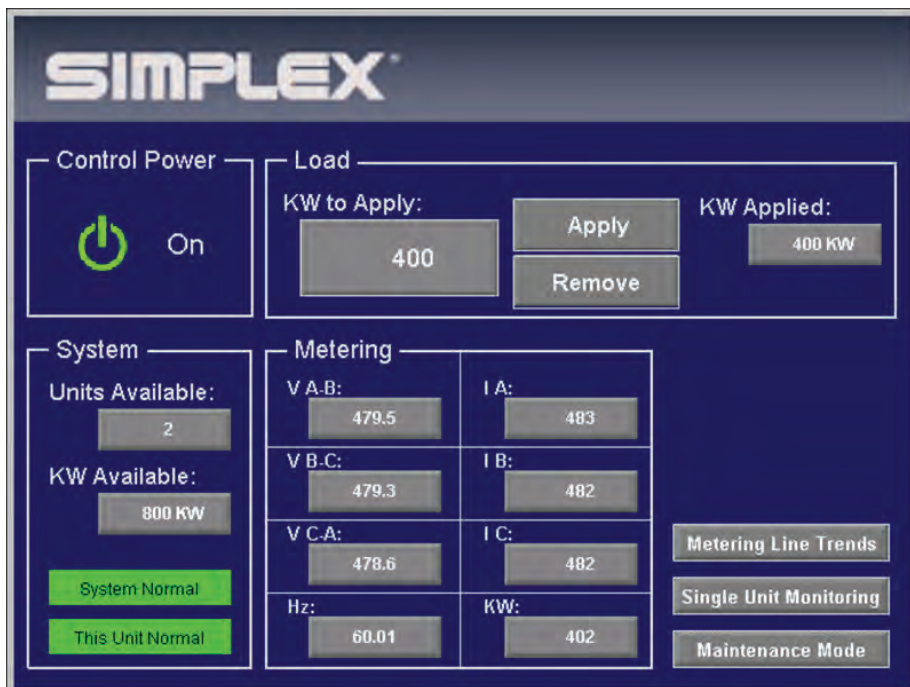
### Data Acquisition

- Captures and records all electrical values
- Start recording/stop recording screen buttons
- One second sample rate
- Exports text file to detachable flash drive which plugs into USB port

### Outputs

MODBUS (standard) or BacNet (optional):

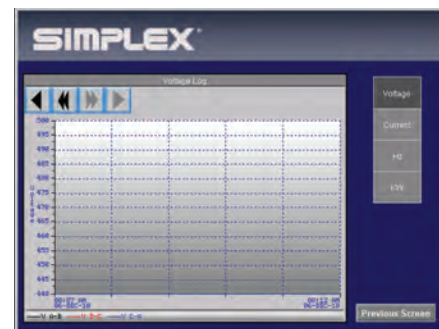
- Load applied
- Each electrical value as above



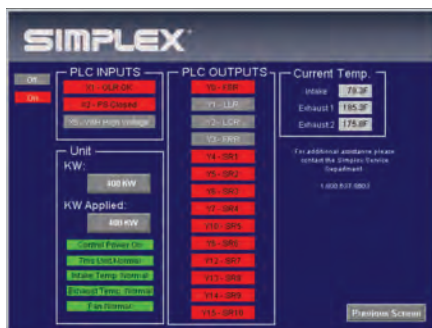
**Main Screen**



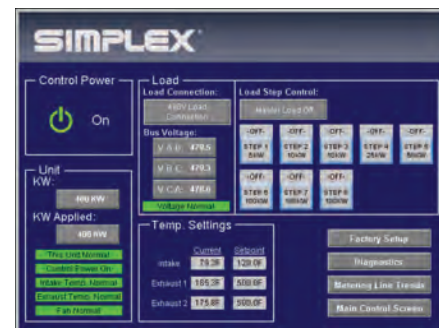
**Monitoring Screen**



**Metering Trends Screen**



**Diagnostics Screen**



**Maintenance Screen**

# Trident 1250

Digital Load Bank with Data Acquisition  
600KW - 1250KW • Page 8

# SIMPLEX®

