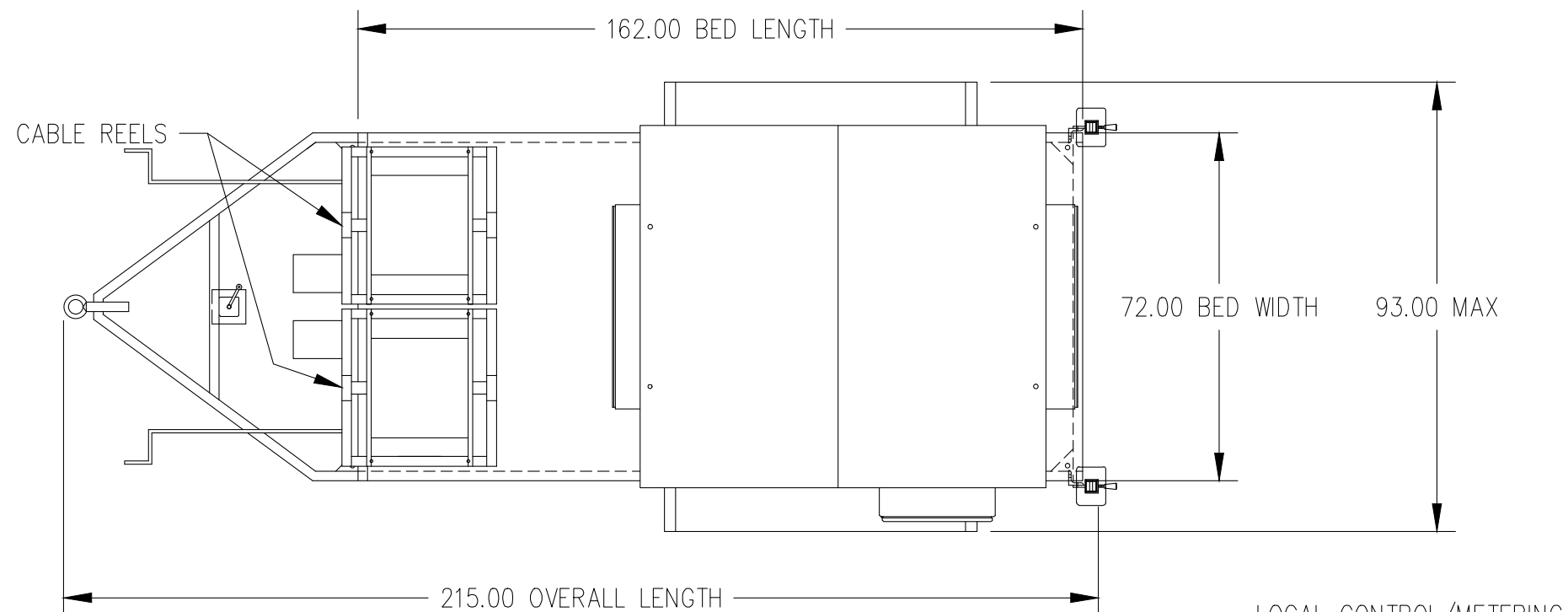


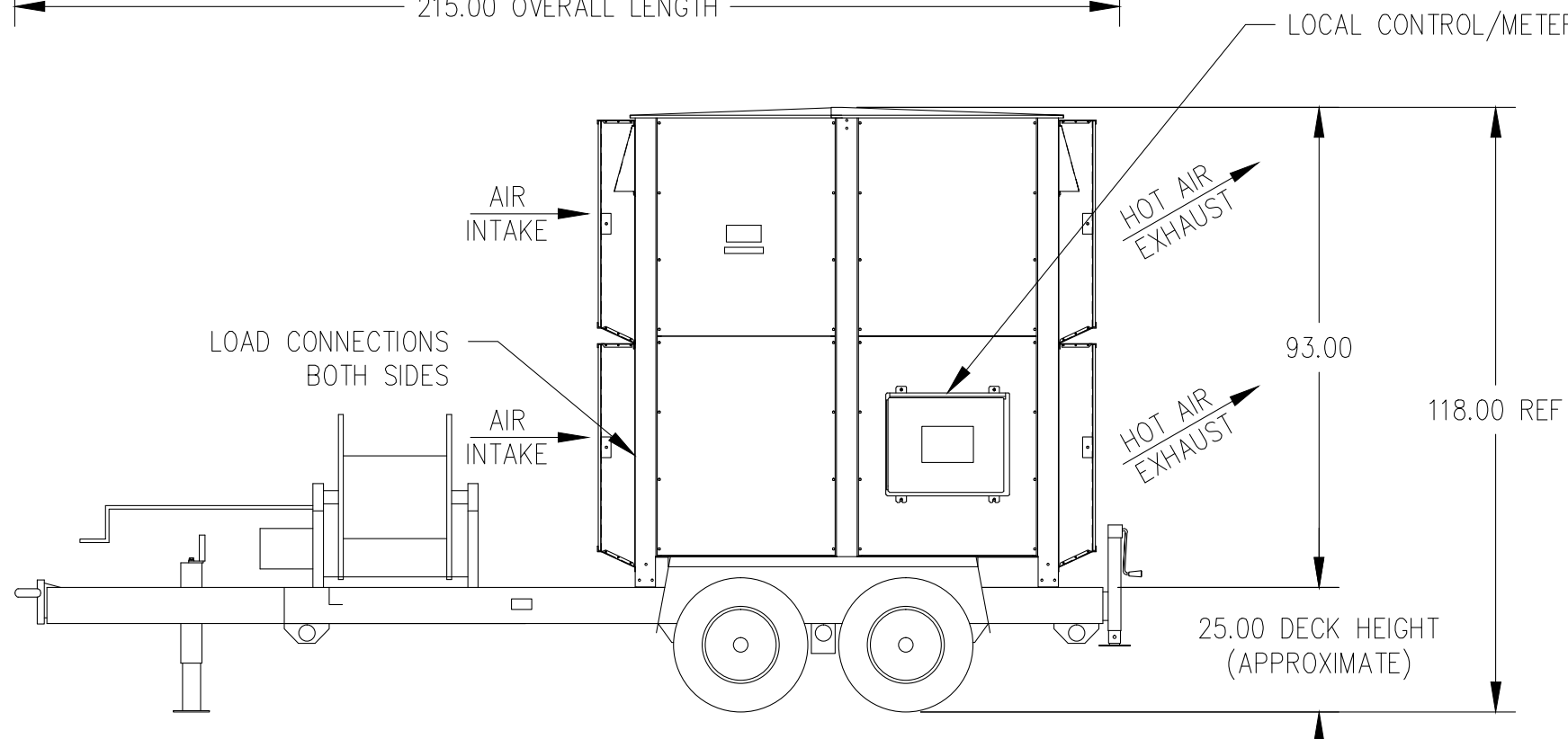
CAM LOK CONNECTION DETAIL  
SEE NOTE 9



9. ALL CAM LOK CONNECTIONS ON BOTH SIDES MUST BE CONNECTED BEFORE APPLYING LOAD.
8. WHEN SURGE BRAKES ARE PROVIDED, REVIEW TRAILER MANUAL PRIOR TO OPERATION.
7. A MINIMUM OF 500 LBS OF CABLE ON REELS OR BALLAST IN THE CABLE REEL AREA IS REQUIRED FOR SAFE TOWING. LESS HITCH WEIGHT WILL CAUSE INSTABILITY.
6. THE FOLLOWING TABLE LISTS THE APPROXIMATE HITCH WEIGHT ACHIEVED BY LOADING CABLE ON THE STORAGE REELS. CAUTION SHOULD BE EXERCISED TO AVOID EXCEEDING THE TOWING VEHICLE'S HITCH CAPACITY.

| CABLE WEIGHT<br>LBS | HITCH WEIGHT<br>LBS | %<br>GVW |
|---------------------|---------------------|----------|
| 500                 | 530                 | 7%       |
| 1000                | 800                 | 10%      |
| 1500                | 1050                | 12%      |
| 2000                | 1300                | 14%      |
| 3000                | 1800                | 18%      |

5. 1500 LBS MAX CABLE STORAGE CAPACITY PER REEL.
  4. TRAILER RATING: 10,000 LBS GVWR
  3. DIMENSIONS ARE IN INCHES.
  2. ALL DIMENSIONS ARE APPROX.
  1. WEIGHT: 6800 LBS, WITHOUT CABLES
- NOTES:



TRAILER MOUNT LOAD BANK  
GENERAL REFERENCE OUTLINE DRAWING  
**Model 5900**

Rev A