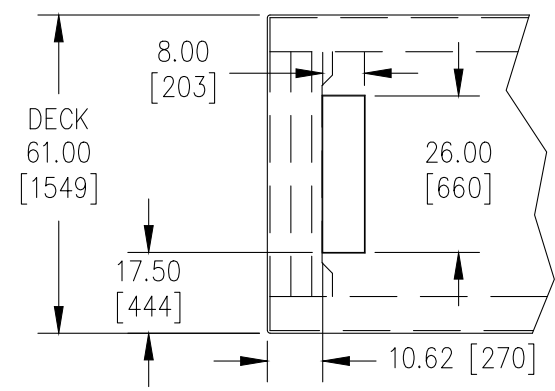


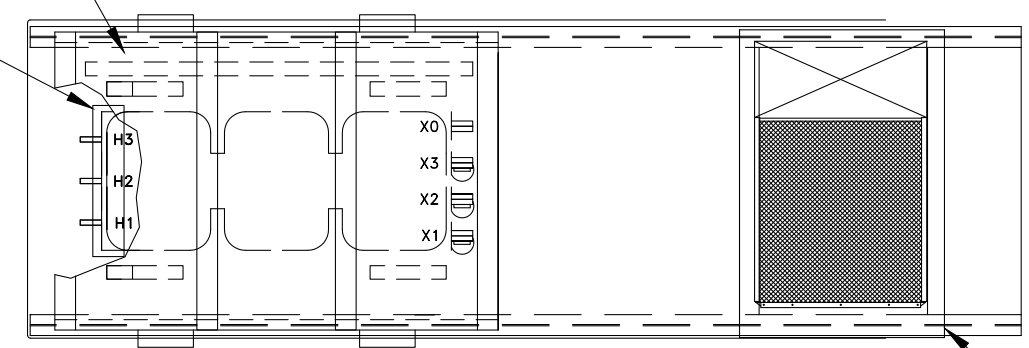
SEE DETAIL C FOR CUSTOMER LOAD WIRING (IF BOTTOM ENTRY)



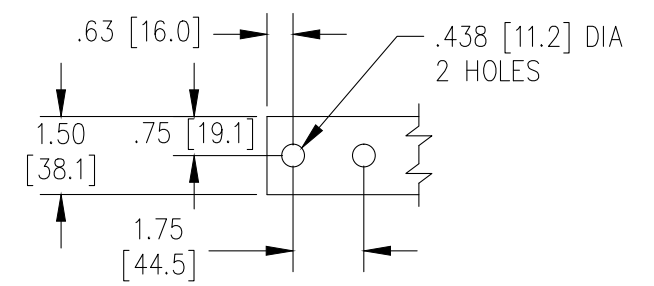
DETAIL C

8 x 26 OPENING HAS A RAISED CURB/FLANGE

TOP VIEW



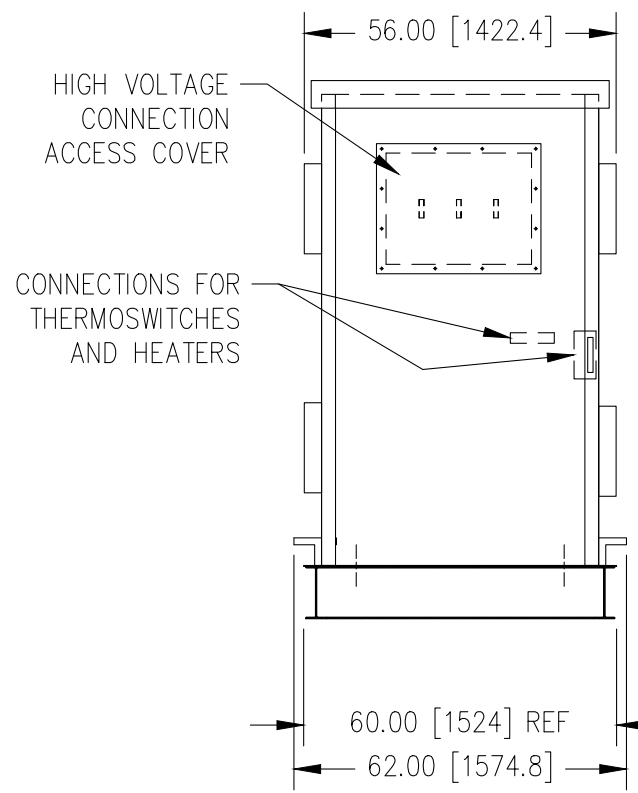
LOAD BANK
REF: SEE SB2793 FOR DETAILS



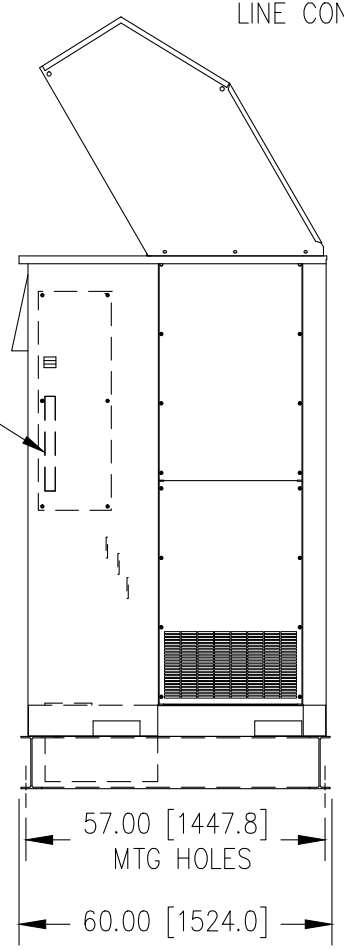
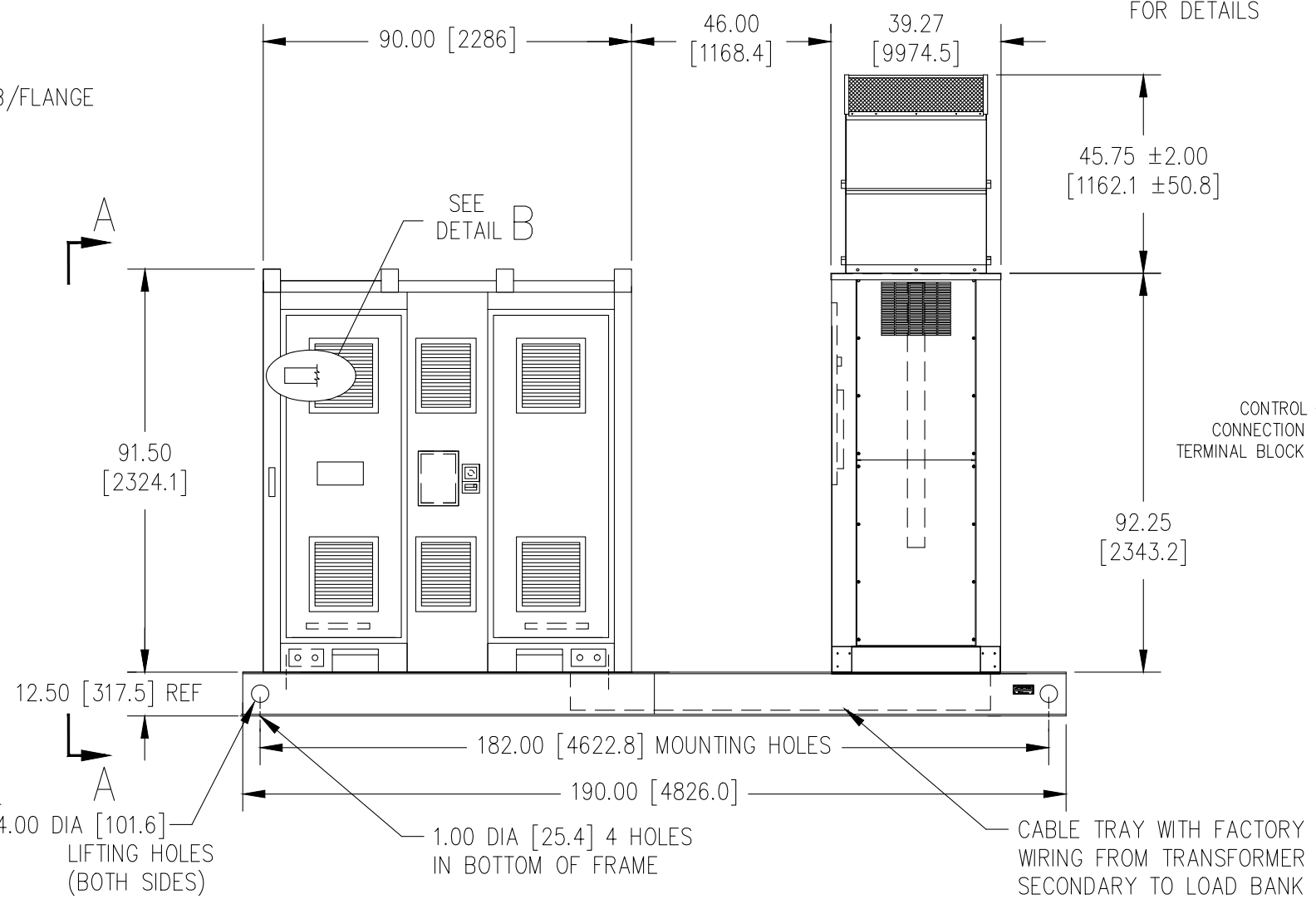
HV TERMINALS
.25 X 1.50 ALUMINUM
[6.4 X 38.1]

DETAIL B

LINE CONNECTIONS



VIEW A-A



PLEASE NOTE: SAMPLE ONLY.
APPROX. DIMENSIONS AND WEIGHT SHOWN FOR 1 BAY UNIT.
UNIT DIMENSIONS AND WEIGHT ARE KVA DEPENDENT.
OTHER RATED UNITS AVAILABLE. CONSULT FACTORY.

2. ALL DIMENSIONS ARE APPROX. INCH [MM]
1. WEIGHT: 10,000 LBS [4536 kg] APPROX



MEDIUM VOLTAGE LOAD BANK - ONE BAY UNIT
GENERAL REFERENCE OUTLINE DRAWING
Model 9810
Rev -