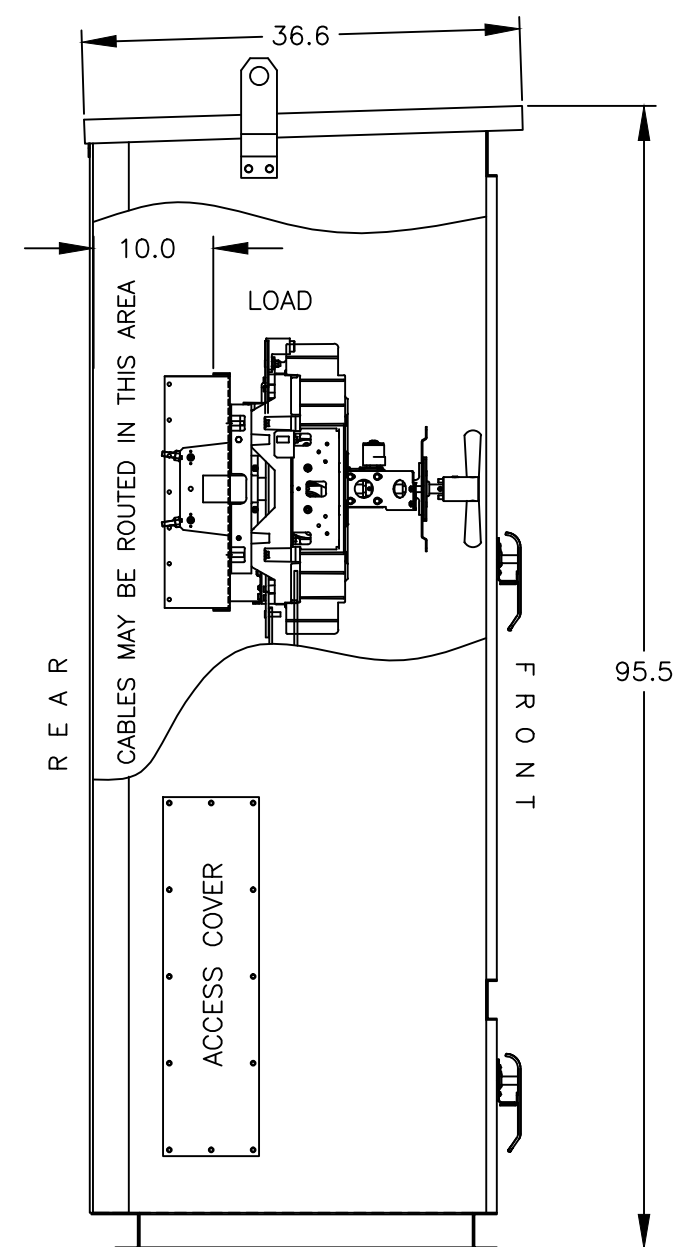
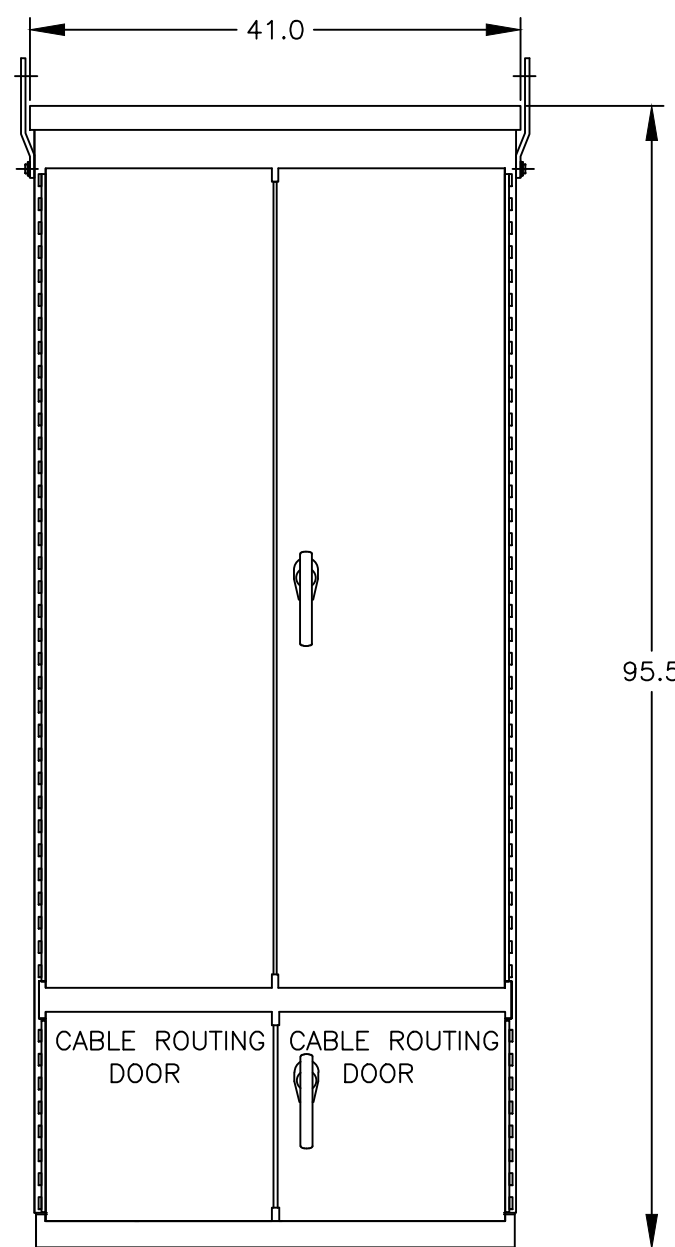


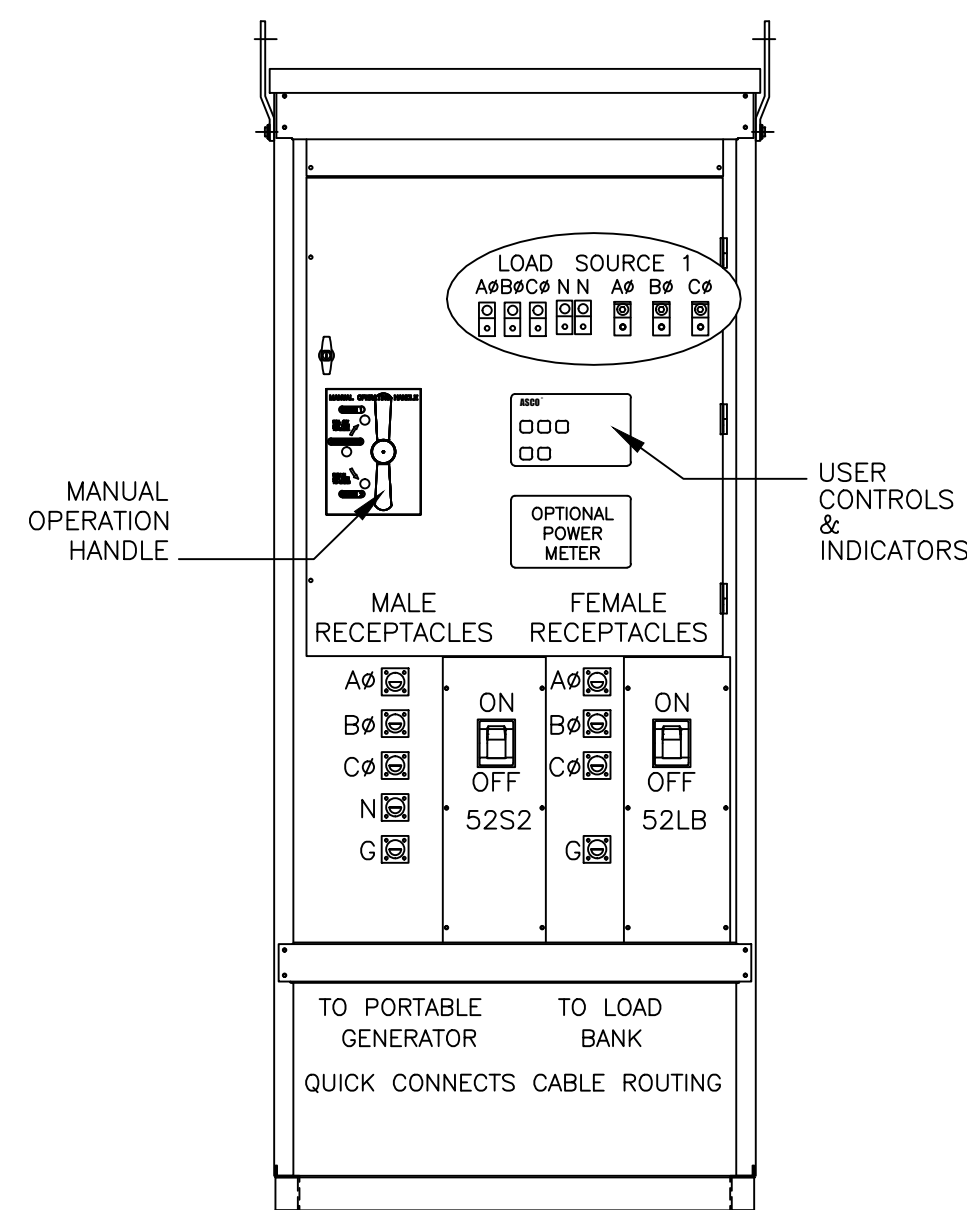
TOP VIEW



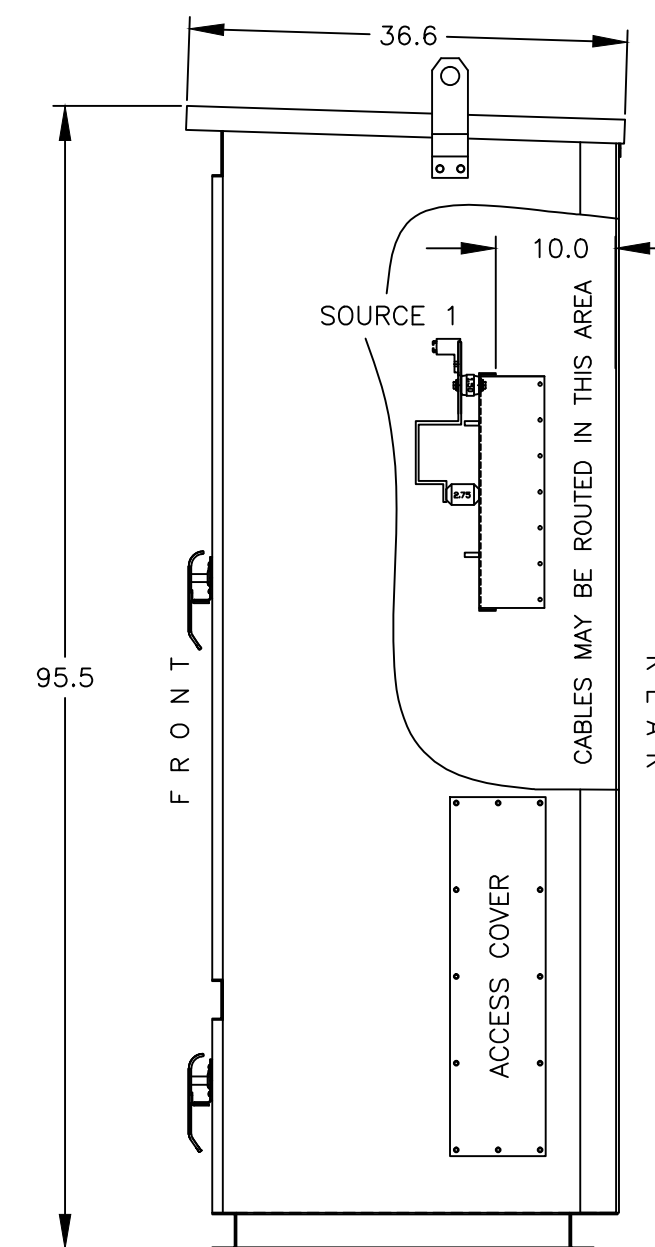
LEFT SIDE VIEW



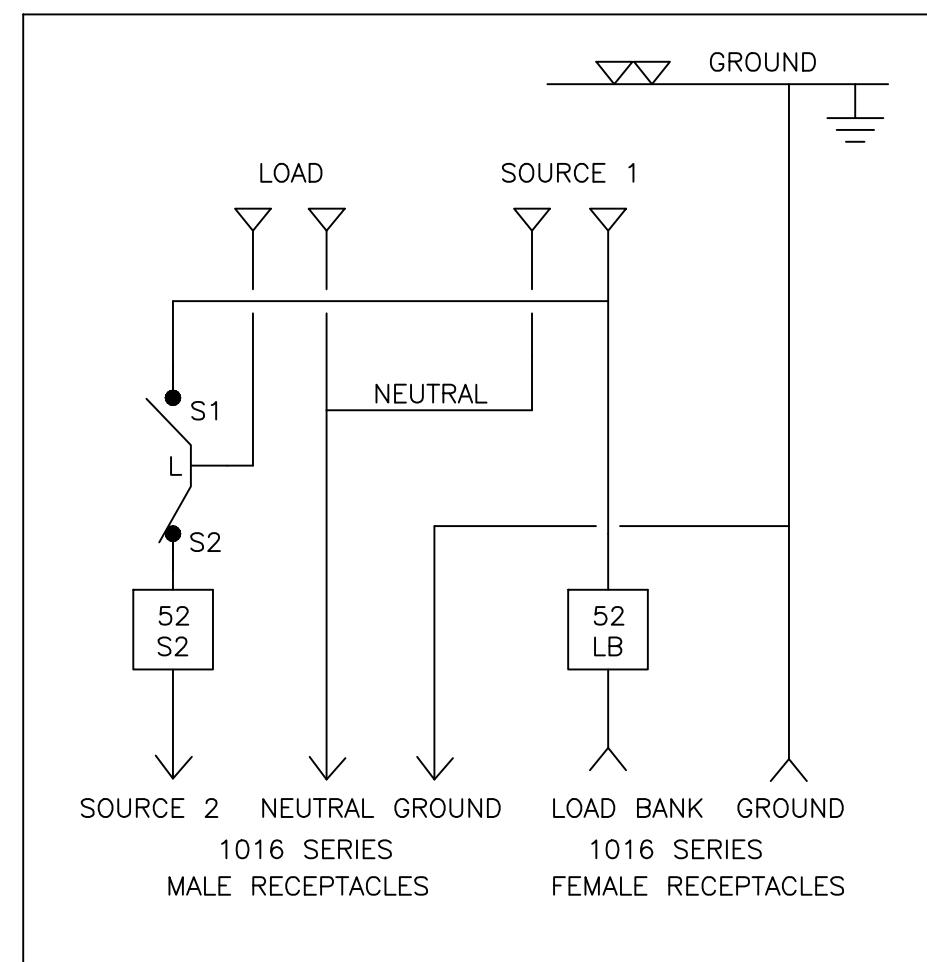
FRONT VIEW



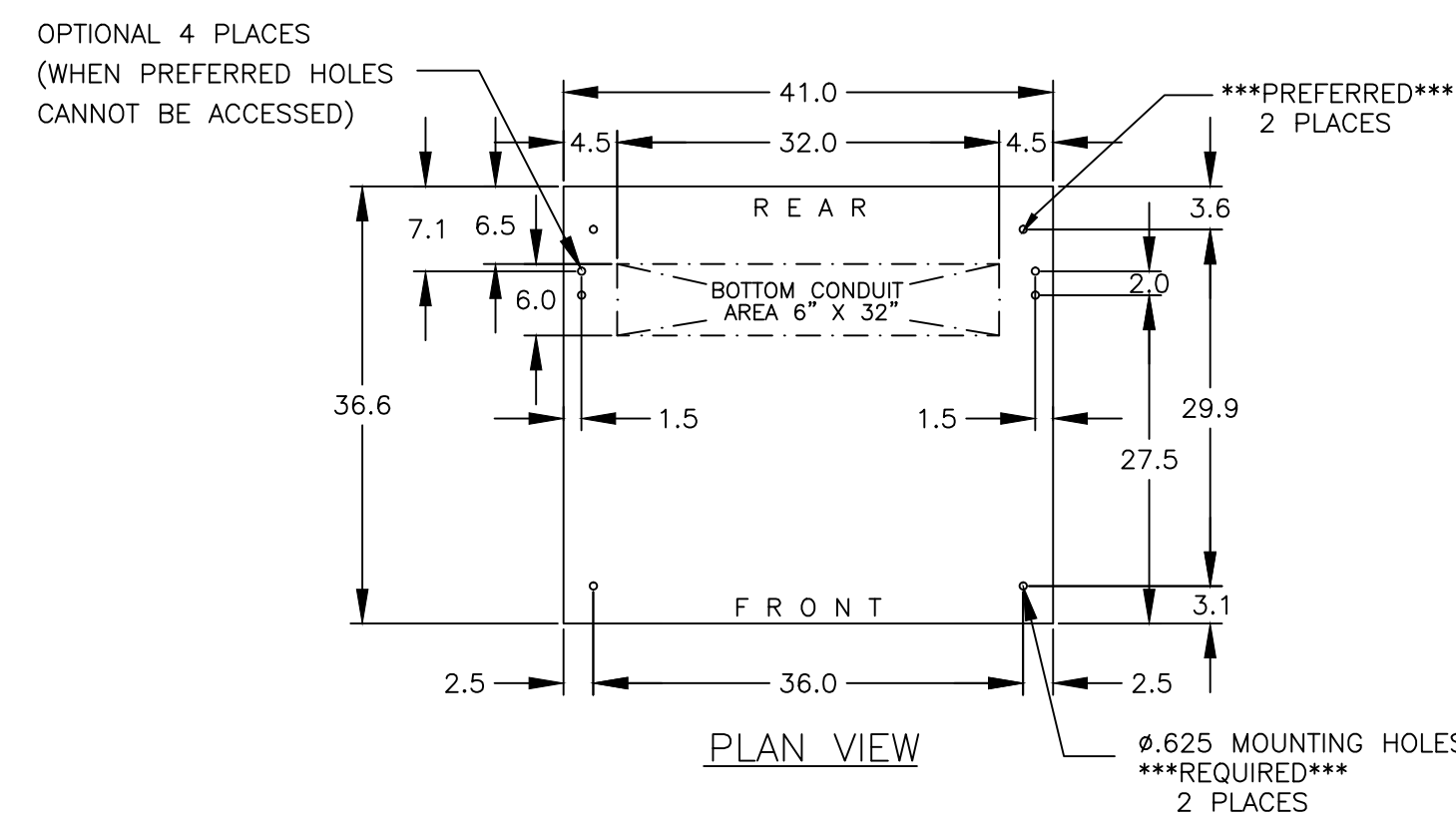
FRONT VIEW
WITHOUT EXTERIOR DOORS



RIGHT SIDE VIEW



ONLINE DIAGRAM



PLAN VIEW

GENERAL NOTES

- FLOOR MOUNTED ENCLOSURE.
TYPE 3R CONSTRUCTED FROM CODE GAUGE STEEL.
FINISH: TYPE 3R, ANSI 61 GRAY POLYESTER SEMI GLOSS ELECTROSTATIC POWDER.
TYPE 3RX EXTERIOR CONSTRUCTED FROM CODE GAUGE STAINLESS STEEL.
(R) EXTERIOR CONSTRUCTED FROM TYPE 304 STAINLESS STEEL.
(S) EXTERIOR CONSTRUCTED FROM TYPE 316 STAINLESS STEEL.
- EXTERIOR DOORS HAVE PADLOCKABLE HANDLES WITH 3-POINT LATCH
- DESIGNED FOR FRONT ACCESS.
- RECOMMENDED CLEARANCES: FRONT: 36", REAR: NONE.
- LIFTING PLATES: SECTIONS ARE SUPPLIED WITH LIFTING PLATES. INSPECT PLATES FOR DAMAGE AND TORQUE BOLTS TO 45 FT LBS BEFORE USE. REFER TO ANSI/NEMA PB 2.1 FOR PROPER HANDLING OF EQUIPMENT. AFTER INSTALLATION OF SECTION, REMOVE LIFTING PLATES. REINSTALL BOLTS INTO EXTERIOR HOLES AND TORQUE TO APPROXIMATELY 20 FT LBS.

SYSTEM NOTES

- SYSTEM RATING: 150 AMPS, 175 AMPS, 200 AMPS, 225 AMPS, 250 AMPS, 300 AMPS, 400 AMPS.
SHORT CIRCUIT RATING : SOURCE 1: 22,000 RMS SYM @ 480V.
SOURCE 2: 22,000 RMS SYM @ 480V.
- ALL BUS IS SILVER-PLATED COPPER, BASED ON 1000A PER SQ. IN. DENSITY.
- GROUND: 25% RATED (OPTIONAL 100% GROUND MAY BE PROVIDED).
- NEUTRAL: 100% RATED.
- APPLICABLE LABEL(S): U.L. 891

TRANSFER SWITCH

- J FRAME MANUAL TRANSFER SWITCH.
- TRANSFER SWITCH RATING: 150 AMPS, 200 AMPS, 260 AMPS, 400 AMPS.
SHORT CIRCUIT RATING WHEN PROTECTED BY A CIRCUIT BREAKER
TIME RESPONSE, MAXIMUM 0.05 SECONDS: 42,000 RMS SYM @ 480V.
SPECIFIC BREAKER RATING: 50,000 RMS SYM @ 480V.
- A FULL RATED NEUTRAL CONNECTION FOR EACH SOURCE AND THE LOAD IS OPTIONAL.
WHEN PROVIDED IT IS IN ONE OF THE FOLLOWING FORMATS.
A. SOLID NEUTRAL
B. SWITCHED NEUTRAL POLE
- UL 1008

CIRCUIT BREAKER: ITEM 52LB & 52S2

- SQUARE "D" 80% RATED TYPE 'LHL' MOLDED CASE CIRCUIT BREAKER 400AF/150AT, 400AF/175AT, 400AF/200AT, 400AF/225AT, 400AF/250AT, 400AF/300AT, 400AF/350AT, 400AF/400AT.
MOLDED CASE CIRCUIT BREAKER, THERMAL MAGNETIC TRIP
SHORT CIRCUIT RATING: AIC 35,000 RMS SYM @ 480V.
- OPTIONAL ___VAC SHUNT TRIP MAY BE SUPPLIED.
- U.L. 489

TERMINATIONS

- SUPPLIED WITH MECHANICAL (SCREW TYPE) LUGS.
LOAD: (1) #4 - 600MCM OR (2) 1/0-250MCM PER PHASE & NEUTRAL & GROUND
SOURCE 1: (1) #4 - 600MCM OR (2) 1/0-250MCM PER PHASE & NEUTRAL & GROUND
A. SUITABLE WIRE BENDING SPACE IS PROVIDED AS PER THE NEC
- OPTIONAL LUGS MAY BE SUPPLIED.
- SUPPLIED WITH 1016 SERIES SINGLE POLE FEMALE RECEPTACLES.
LOAD BANK : (1) PER PHASE
LOAD BANK : (1) ON GROUND
- SUPPLIED WITH 1016 SERIES SINGLE POLE MALE RECEPTACLES.
SOURCE 2: (1) PER PHASE & NEUTRAL
SOURCE 2: (1) ON GROUND

PROJECT NAME:		288936	SV	RN	04-05-21
REV. TO SHEET	ECN NO.	BY	APP.	DATE	
OUTLINE		MOUNTING			
JMGDQ 150A - 400A, LHL AND CAM-LOK ON LB & S2					
TYPE 3R/3RX 95.5 X 41 X 37					
BY	DATE	MANUFACTURING TOLERANCES TO BE IN ACCORDANCE WITH ASCO PROCEDURE MP-1-003. FOR PLASTIC PARTS SEE MP-1-005			
DRAWN BY	SV	04-01-21	ASSEM. REF. NO.	COMPUTER GENERATED DRAWING	
CHECKED	RN			SCALE 1/16" = 1" SIZE	DS
PROJECT APPROVAL				PROPERTY OF ASCO POWER TECHNOLOGIES. USE PERMITTED FOR OUR WORK ONLY. ALL RIGHTS OF DESIGN OR INVENTION ARE RESERVED.	
FINAL APPROVAL				1410001-002	
DRAWING -		ECN	NO	288936	SHEET 1 OF 1

