

POWERTRON®



OWNER'S MANUAL FOR: *Tap Box Quick Connect*

BREAKER SERIES

- **100 AMP**
- **200 AMP**



Trapped cable door
prevents cable
disconnection by
unauthorized
personnel



POWERTRON CORP.
P.O. Box 160
Nokomis, Illinois, 62075
800.221.7665
www.powertronsolutions.com





OWNER'S MANUAL FOR: *Tap Box Quick Connect*

BREAKER SERIES

- **100 AMP**
- **200 AMP**

We're committed to providing premier products that are easy to install and safe to operate. To help ensure the longevity and performance of your Powertron® Tap Box, refer to this Owner's Manual and by contacting us at 800-221-7665 for any additional questions.

UL Verified Information

Trapped cable door prevents cable disconnection by unauthorized personnel



Your General Tap Box Information:

Product Label Apply Here

US Patent Information

Patent No.: US D771,580 S
Date of Patent: Nov. 15, 2016

UL Listing Information

cULus 1008 Listed
Control #: 47HY
Product ID: Transfer Switch
Accessory

General Installation Information:

Date of Installation: _____

Installed By: _____

Company Name: _____

Company Phone #: _____

Company Website: _____

Safety Information and Definition

In this manual and in labels located on the Powertron® Tap Box the Safety Signal Words and the Safety Alert Symbol are defined by:

• Safety Signal Words

DANGER: means if the safety information is not followed someone will be seriously injured or killed.

WARNING: means if the safety information is not followed someone could be seriously injured or killed.

CAUTION: means if the safety information is not followed someone may be injured.

• Safety Alert Symbol

This symbol (▲) indicates a potential personal injury hazard and is used to identify safety messages.

▲ DANGER: HAZARD OF ELECTRIC SHOCK, EXPLOSION OR ARC FLASH

- APPLY APPROPRIATE PERSONAL PROTECTIVE EQUIPMENT (PPE) AND FOLLOW SAFE ELECTRICAL WORK PRACTICES.
- THIS EQUIPMENT MUST ONLY BE INSTALLED AND SERVICED BY QUALIFIED ELECTRICAL PERSONNEL.
- TURN OFF ALL POWER SUPPLYING THIS EQUIPMENT BEFORE WORKING ON OR INSIDE EQUIPMENT.
- ALWAYS USE A PROPERLY RATED VOLTAGE SENSING DEVICE TO CONFIRM POWER IS OFF.
- REPLACE ALL DEVICES, DOORS AND COVERS BEFORE TURNING ON POWER TO THIS EQUIPMENT.
- ALL WIRING MUST BE MADE IN ACCORDANCE WITH THE NATIONAL ELECTRIC CODE (NEC) AND LOCAL BUILDING CODES.
- POWERTRON® TAP BOXES ARE NOT INTENDED FOR USE IN EMERGENCY SYSTEMS AS DEFINED BY NFPA/NEC CHAPTER 7, ARTICLE 700. EMERGENCY SYSTEMS HAVE SPECIAL REQUIREMENTS AS SPECIFIED BY LAW.
- REFER TO THE CONNECTION DIAGRAMS IN THE ELECTRICAL CONNECTION SECTION OF THIS MANUAL TO CONFIRM YOU HAVE THE CORRECT MODEL FOR THIS INSTALLATION.

Table of Contents

| | |
|--|---------|
| Unit & Shipping Weight | page 1 |
| General Safety Information | page 1 |
| Definitions | page 2 |
| Installation | page 3 |
| Considerations when Locating your Powertron® Tap Box | page 4 |
| Connecting your Tap Box to Building | page 5 |
| Electrical Connections to Building | page 6 |
| Tap Box Components & Parts | page 7 |
| Maintenance and Post Installation Check List | page 8 |
| Electrical Connections to Generator | page 9 |
| Connecting the Generator to the Tap Box..... | page 10 |
| Maintenance and Service of Powertron® Tap Box..... | page 11 |
| Powertron® Exclusive Limited Warranty | page 12 |

Unit & Shipping Weight

| | Unit Weight | | Approx. Shipping Weight (Skid, Packaging, etc.) | |
|---------------|----------------------|---------------------------|--|---------------------------|
| | Mild Steel Enclosure | Stainless Steel Enclosure | Mild Steel Enclosure | Stainless Steel Enclosure |
| 100 & 200 Amp | 105 lbs. | 90 lbs. | 155 lbs. | 140 lbs. |

General Safety Information

Within the material provided by Powertron® Corp., you shall find separate manuals (i.e. Hubbell single pole receptacles, Hoffman enclosure, etc.) of key components used in the Powertron® tap box. Read all component literature before installing the Powertron® Tap Box. Save the information for future reference. In addition to following instructions and warnings provided for the Powertron® Tap Box, also follow proper lockout/tagout procedures and what is supplied in the component manufacturers' information:



Danger: Hazard of Electric Shock, Arc Flash, or Explosion

- Hazardous voltages exist inside the Powertron® Tap Box. Before opening the barrier wall cover, make sure the generator cables are disconnected and the GFCI supply circuit has been de-energized and locked out at its breaker.
- Wear appropriate personal protective equipment (PPE) and follow safe electrical work practices per NFPA 70E.
- Connection of the Powertron® Tap Box to a building's electrical system must be carried out by a qualified person. Connection of a generator to the Powertron® Tap Box must also be made by a qualified person.
- The Powertron® Tap Box, Breaker Series, provides over current protection to the cables from the Tap Box, through the transfer switch and for cables to the building's distribution panel connections. The generator must provide fault current protection for cables to the Tap Box.
- The Powertron® Tap Box does not provide phase synchronization or matching. It is critical that the Powertron® Tap Box's is marked with the correct phase rotation for its connection to the building's wiring. When a generator is connected, its phase rotation must match what is marked on the Powertron® Tap Box. See *Electrical Connections to Building* section.
- To operate safely the Powertron® Tap Box must be maintained periodically. Refer to the Maintenance section of this manual for more information including the maintenance checklist.
- To prevent overheating of the electric cable connections inside the Powertron® Tap Box they must be free of corrosion and the cable lug bolts must be fully tightened to the lug manufacturer's specifications. The bolt torque required for the connectors to the copper bus bar or power distribution block is listed on the label located inside the Powertron® Tap Box and in the maintenance section of this manual.

Definitions

- **Cam-lock:** A single pole device commonly found on generators and tap boxes. The device enables the user to quickly connect and disconnect without to use of tools.
- **Busbar:** In electric power distribution, a busbar is a metallic bar or strip, typically found inside a panel, switchgear, and busway enclosures. Busbar provides connectivity between two electrical sources.
- **Generator Cable Trapped Door:** A hinged door, that allows generator cables to securely connect to the tap box and minimizes risk of removing cables while the main door is closed and properly locked.
- **Circuit Breaker:** an automatic device for stopping the flow of current in an electric circuit as a safety measure.
- **Emergency Source:** The electrical power supplied by the generator.
- **Emergency System:** Emergency Systems have special requirements as specified by law. Powertron® Tap Boxes are not intended for use in Emergency Systems as defined by NFPA/NEC Chapter 7, Article 700.
- **Field Assembled:** is a process by which products are designed to be installed within the field with minimal fabrication and ease of installation.
- **Generator:** Electrical/Mechanical device that converts mechanical energy into electrical energy.
- **Ground-Fault Circuit Interrupter (GFCI):** A device intended for the protection of persons that functions to de-energize a circuit within an established period of time when a current to ground.
- **Normal Source:** The electrical power supplied by the local electrical utility company.
- **Pass Through Device:** Electrical connection point that does not have over current, fault or other protection capabilities.
- **Penta Bolt:** Penta bolts are tamper resistant, having pentagonal heads that cannot be loosened by typical hardware store tools.
- **Power Distribution Block:** Block for making the connection of the conductors from building's transfer switch (lower lugs of block are factory connected to back of plugs).
- **Tap Box:** A pass through device that provides connection points for electric cables from the generator.
- **Transfer Switch:** An automatic or manual device for transferring one or more load conductor connections from one power source to another.
- **cULus 1008 Listing:** If a certain product is cULus Listed, it means that UL tested the product to meet all the requirements under Canadian and US standards. Anything that has cULus mark can be used both in Canada and US. This listing recognizes standby systems that allow portable generator connection, UL 1008 is the proper standard for transfer switches and tap boxes.
- **UL Verified Mark:** UL Verification is an objective, science-based assessment that confirms the accuracy of marketing claims. UL's independent certification process analyzes the validity of specific advertising or promotional statements, a separate verified fact from the ambiguous. To learn more, go to www.verify.ul.com.

Installation

Intended Use Statement:

The Powertron Tap Box, Breaker Series, provides a connection point between either a Wye or Delta wired portable generator and a pre-installed transfer switch. Upon loss of utility supplied electric power a correctly matched portable generator can be easily connected to a building where a Powertron Tap Box has been installed. The Powertron Tap Box with installed breaker provides overcurrent protection to cables connecting the Tap Box to the building's transfer switch, the transfer switch, and cables from the transfer switch to the building's distribution panel board.

Notice to Installer:

Powertron® Tap Boxes should only be installed by qualified persons (see Definition's section). Depending on your local building codes and ordinances a qualified licensed electrician, electrical contractor, or engineer should perform the installation after determining the following:

- Building's load requirements
- Building's 3Ø voltages and phase sequencing (rotation direction)
- Generator capacity required to meet load
- Proper size of Powertron® Tap Box
- Parking location for portable generator
- Cable lengths from transfer switch to Tap Box
- Cable length from Tap Box to generator
- Cable conductor material and size (ampacity)
- Grading of protection devices



Refer to the connection diagrams in the electrical connection section of this manual to confirm you have the correct model for this installation.



Powertron® Tap Boxes are partially wired at the factory. Internal connections to a building's transfer switch and grounding system must be completed before use.

If the included GFCI outlet is to be installed it must be connected to the load side of the building's load center. If it is desired for the outlet to remain powered when the Emergency Source is operating then it should be connected to a branch circuit that is energized by the transfer switch when operating on the Emergency Source. Do not connect GFCI to the tap box copper bus bar or power distribution block. It is recommended that the GFCI be connected to a dedicated branch circuit breaker so that the circuit does not become overloaded when supplying the generator block heater and battery charger. If a typical 20 Amp breaker is enough then it may be clearer to simply recommend that the breaker size be 20 Amp.



Tap Box GFCI receptacle shall be wired downstream of branch circuit protection. The rating of the protection shall not exceed the 20 Amp rating of the receptacle.

Considerations when Locating your Powertron® Tap Box

1. Access by unauthorized persons or vandals should be considered when selecting the location to install the Powertron® Tap Box. Appropriate door latching and locking hardware should be selected to meet your needs.
2. Powertron® Tap Boxes are designed to be installed on the exterior of a building. To reduce the length of cabling from the building's transfer switch, a typical installation would be near the utility service entry point. The transfer switch is normally located inside the building near this entry point and near the main electrical distribution panels.
3. A hard surface parking place should be selected for the portable generator near the Powertron® Tap Box. Choose a location that is likely to be easily accessible should there be a loss of utility power.
4. It is recommended that the Powertron® Tap Box should be installed where the generator cables can be connected by a person standing on firm ground without the need to use a ladder.
5. A correctly installed (located) Powertron® Tap Box should allow easy access for maintenance.
6. You should consider placing the Powertron® Tap Box away from areas where it might be damaged by vehicles, lawn maintenance equipment, trash trucks, dumpsters, or loading dock equipment.
7. Powertron® Tap Box should not be located where a lawn/irrigation system would spray water directly on it.
8. If unusual conditions exist where the Powertron® Tap Box is to be installed, contact your Powertron® representative. Unusual conditions include but are not limited to: chemical fumes, explosive vapors or dusts, salt laden air, vibration or shock loading, ungrounded power system, or below ground level in a pit.

Connecting your Tap Box To Building

1. Review Hoffman® Enclosure Manual supplied with the Powertron® tap box.



To ensure proper sealing and enclosure protection rating, use the provided sealing washers. Install the sealing washers inside the enclosure with tapered cone against the enclosure and then add the flat washers.

2. After determining the required size for the cable from the transfer switch to the tap box, an appropriate size conduit should be selected.



To maintain the Tap Box NEMA 3R rating, only use a conduit hub with a proper gasket.

3. The Powertron® Tap Box provides a variety of options when installing conduit to its enclosure. Use *Figure 1* and *Chart 1* for recommended conduit entry points and measurements when installing the Powertron® Tap Box. Extra care should be taken when connecting through the back panel so that the conduit hub does not interfere with the mounting of the box flush to wall.

| Conduit Entry Area | |
|--------------------|---|
| A | Entry area: Measure 2" from top of enclosure |
| B | Entry area: Measure 2" from bottom of enclosure |
| C | Entry area: Measure 1" from back of enclosure |

Chart 1

4. When creating the conduit hole in the tap box, cover pre-installed wires and power distribution block or copper bus bar to prevent metal shavings or filings from falling on them. Clean any stray metal pieces from the Powertron® Tap Box before installation is deemed complete.
5. The Tap Box must be mounted level and plumb to allow proper drainage. Do not block the small weep holes located in bottom of the Tap Box.
6. Tap Box must be securely fastened to the building with a minimum (4X) 3/8" fasteners. Use appropriate fasteners for the building wall material. The wall must be able to support 350 pounds and may need to utilize appropriate lifting method. See *Figure 3* for mounting hole pattern.
7. See *Unit and Shipping Weight* section for approximate tap box weight.

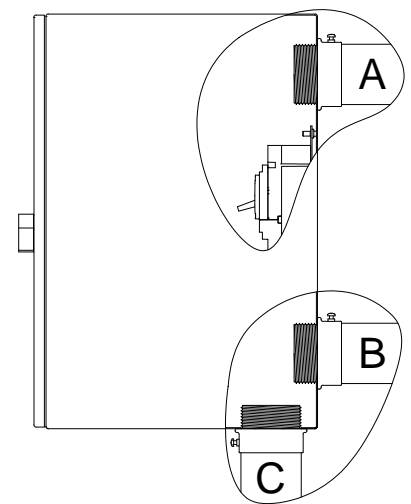


Figure 1

The above illustrates locations of conduit entry points for the Powertron® Tap Box. See *Chart 1* for approximate measurements.

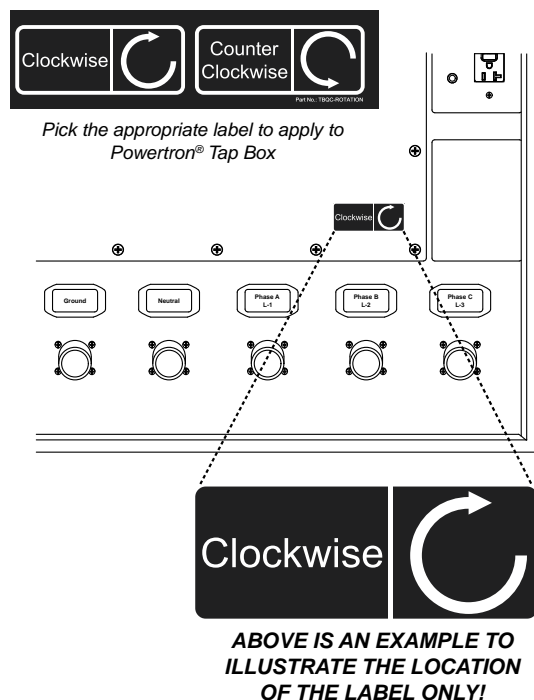
Electrical Connections to Building



Warning – Electrical

1. Do not attempt to use the Powertron® Tap Box for any purpose before it is fully installed.
2. A Transfer Switch must be installed between the Powertron® Tap Box and the building's load center (power distribution panels) that are connected to the normal source (local electrical utility company). **Failure to install a Transfer Switch will allow generator power to energize the utility lines and put utility workers at risk of electrocution.**

Figure 2



3. The Powertron® Tap Box connection to the transfer switch must only be made by a qualified person, with the transfer switch locked out from utility power.
4. Make sure the voltages are correctly indicated on the Powertron® Tap Box.
5. After determining the phase rotation, select appropriate label from the provided Phase Rotation label and apply to the Powertron® Tap Box. See *Figure 2* for example of the location for the Phase Rotation label.
6. If aluminum cable is used connecting to:
 - **Power Distribution Block:** Apply joint compound designed specifically for aluminum connections.
 - **Copper Bus Bar:** Use cable lugs designed specifically for aluminum connectors.

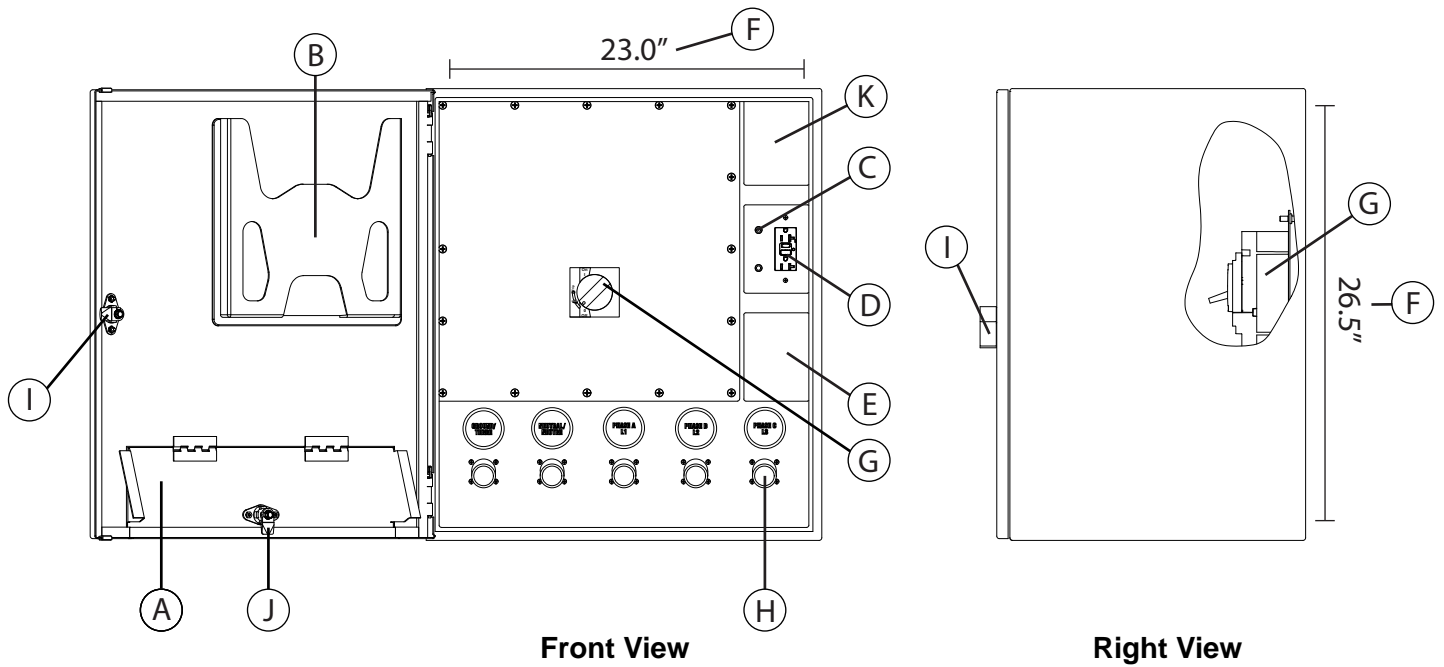


Warning – Grounding

1. Refer to the current edition of NFPA 70: National Electric Code, Article 445 for grounding of generators and Article 250 for general information on grounding.
2. The installer should make certain that a solid and permanent metallic connection between the building ground point and the Powertron® Tap Box is in place by:
 - a. Installing a ground cable from the power distribution block or copper ground bus bar to the building ground point.
 - b. A grounding jumper must be installed from the power distribution block or copper bus bar ground to the ground lug on the enclosure.
3. Conduit should not be relied upon to provide grounding protection to tap box.
4. The GFCI supply conductors should include a separate ground conductor.

Tap Box Components & Parts

Figure 3



Standard Components and Parts

| | | | |
|---|--|--|--|
| A | Trapped Cable Door Patented #US D771,580 S UL Verified A061453 | K | Additional accessory plates available online |
| B | Literature Holder ▲ Read and follow the component manufacturer's instructions and warnings provided | Additional Parts (Not Shown): <ul style="list-style-type: none"> • Safety and Product Labels • Grounding Jumping Cables • Mounting Back Panel • Cable Door Weather Guard • Terminal Strip • Internal Wiring for Accessories • Enclosure Touch Up Paint | |
| C | Remote Start/Stop Terminals | | |
| D | GFCI 20 Amp Receptacle | | |
| E | Cover plate shall only be removed when installing Powertron® Phase Rotation Monitor | | |
| F | Mounting Hole Pattern – (4X) 0.50" dia. | | |
| G | Molded Case Breaker <ul style="list-style-type: none"> • Connection Point: Mechanical Lug, 3/0 AWG-350 Kcmil • Screw Torque: 225 lb-i.n (26 N·m) | Notes: | |
| H | Series 16, 400 Amp, 600 VAC, Single Pole Cam-Lock Receptacle | | |
| I | Key Lock Handle (additional keys available upon request) | | |
| J | Quarter Turn Twist Lock Handle (Non-Locking) | | |

Maintenance and Post Installation Check List:

- ▷ Use check list for periodic inspection and maintenance.
- ▷ Powertron® Tap Box is easily accessible.
- ▷ Enclosure
 - Box is securely fastened to wall.
 - Inside cabinet is dry with no signs of water leaks.
 - Door gaskets intact and pliable.
 - Door hinges secure and lubricated.
- ▷ Cable Outlet Door.
 - Latch when not in use.
- ▷ Labels intact and readable.
- ▷ Conduit connection is weather tight with no signs of leakage.
- ▷ Interior spaces:
 - Clear all weep holes and inspect infestations such as ant or wasp colonies.
 - Paint is intact, no corrosion.
- ▷ Business owned generator connection cables:
 - Connectors are free of cracks, abrasions, wear.
 - Flexible cord insulation is free of cracks, wear marks, abrasions, exposed strands or underlying insulation layers. No tape repairs.
 - No exposed live parts.
- ▷ Grounding--the following are securely attached, not corroded:
 - Box grounding stud.
 - Wire from the grounding stud to upper door.
- ▷ Electrical Connections:
 - Electrical connections are corrosion free.
 - Electrical cable insulation is intact with no cracking.
- ▷ Electrical cable insulation are tight to 200 inch pounds torque.
- ▷ Receptacle bolts to copper bus bar are tight to 98 lb. ft. of torque.

Notes:



Before any maintenance is attempted the generator must be disconnected and the circuit breaker supplying the GFCI outlet must be open and locked out.



Only use replacements parts of equal or greater quality than original. If you're warning labels are damaged or not readable. Replacements are available upon request at www.powertronsolutions.com or 800-221-7665.

Electrical Connections to Generator



Warning

1. Follow all Warnings and Instructions provided by the generator manufacturer.
2. Connection of generator to Powertron® Tap Box must be made by a qualified person.
3. Tap Box does not provide phase synchronization or detection. Ensure that the generator's fault protection is in place.
4. All cables must be connected and disconnected to the Tap Box with the generator not operating.
5. Disable the generator's automatic starting circuit to prevent inadvertent starting.
6. Generator voltage and phase sequence must match what is marked on Powertron® Tap Box. A wrong phase sequence connection will cause damage to motors and other electrical equipment.
7. Cable receptacles are limited to 400 amps each. See diagram below for Powertron® Tap Boxes:

Amperage: 100/200 Amp

Phase: 3 Phase

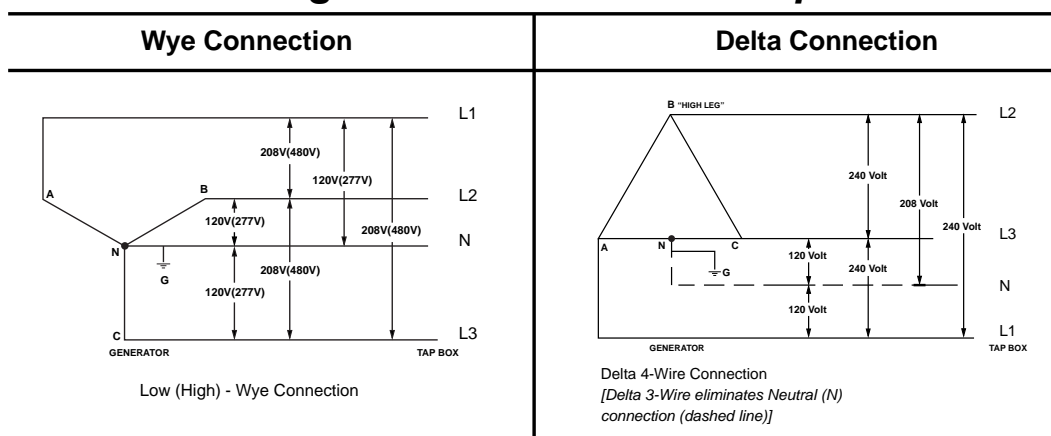
Fully Rated Ground: Yes

Number of Cables: 5 pcs.

| Voltage | Ground | Neutral | L1 | L2 | L3 | 100 Amp | 200 Amp |
|----------|--------|---------|----|----|----|---------|---------|
| 208Y/120 | | | | | | x1 Row | x1 Row |
| 240/120 | | | | | | x1 Row | x1 Row |
| 480Y/277 | | | | | | x1 Row | x1 Row |
| 600/347 | | | | | | x1 Row | x1 Row |

Figure 4

Connection Diagrams for Powertron® Tap Box Models



Connecting the Generator to the Tap Box

1. Confirm that the generator output voltage and Powertron® Tap Box voltage match.
 - a. Plug connectors are colored to indicate voltage. Green and White indicate Ground and Neutral terminals.
 - b. 3 phase terminals that are 208Y/120, 240/120, and 347/600 Volts are colored Black, Red and Blue.
 - c. 3 phase terminals that are 480Y/277 Volts are colored Brown, Orange, and Yellow.
2. Check that the generator is off using proper lockout/tagout procedures.
3. Turn breaker inside Powertron® Tap Box to OFF.
4. Disable any automatic generator starting circuit to prevent inadvertent starting while making connections.
5. Connect the generator ground (green) cable(s) first.
6. Then the neutral (white) cable(s) second.
7. Connect the 3 phase cables last. The phase sequence of the generator connections must follow the phase sequence marked on Powertron® Tap Box lower cabinet.
8. Proceed with generator manufacturer's starting procedures.
9. If appropriate, enable the generator's automatic starting circuit.
10. Turn breaker inside Powertron® Tap Box to ON.
11. When disconnecting remove the 3 phase cable(s) first, then neutrals and grounds last.
12. Follow generator's instructions for connecting its battery charger and block heater to the GFCI outlet in the Tap Box.



Keep bystanders away from Powertron® Tap Box, Generator, and cables.



Mark a hazardous zone with caution tape or flagging to alert persons to not enter area of generator or cables.



Follow all Lockout/Tagout and Arc Flash procedures.

Maintenance and Service of Powertron® Tap Box

- The Powertron® Tap Box, like all electrical equipment, requires periodic maintenance. Maintenance is important because the tap box may be installed and stand idle for a long period of time before it is required.
- For continued business operation when an unexpected loss of normal source power occurs, it is important that the Powertron® Tap Box be kept ready for use.
- Powertron® recommends, at a minimum, an annual inspection of the Tap Box. Proper maintenance will provide many years of “ready to use” service.
- A correctly installed (located) Powertron® Tap Box should allow easy access for maintenance. See section titled, *Maintenance and Post Installation Check List* as general guidelines for your maintenance program.
- Because of the variety of locations and applications of the Powertron® Tap Box not all maintenance issues can be anticipated. Additional items may be required at your installation.



Maintenance should be performed by a qualified person.



Before any maintenance is attempted the generator must be disconnected and the circuit breaker supplying the GFCI outlet must be open and locked out.



Refer to breaker instructions and the following:

RONK Electrical Industries

1-800-221-7665

www.powertronsolutions.com / www.ronkelectrical.com

Powertron® Exclusive Limited Warranty

This agreement constitutes the exclusive limited warranty of POWERTRON CORP. or Powertron® (“Manufacturer”) for the Powertron® Series Tap Boxes (all models), Tap Box accessories, cabling for Powertron products, and Powertron® scaffolding accessories (collectively or individually the “Product”) given to a purchaser of the Product (“Buyer”, and collectively with Manufacturer, the “Parties”). All prior or contemporaneous understandings or agreements regarding the warranty of the Product, whether written, oral, express or implied, are merged into and with this exclusive limited warranty which fully states the Parties’ agreement. Manufacturer warrants the Product manufactured and sold by it to be free of defects in workmanship and materials for a period of fifteen (15) months, which period shall begin on the date the Product is shipped by the Manufacturer to either the Buyer, distributor or other third-party contractor. If during the warranty period any Product is proven to be defective upon Manufacturer’s inspection, the sole responsibility of Manufacturer shall be to repair or replace, at its sole discretion, the Product or components thereof that have been found to be defective within the warranty period. Manufacturer shall not be obligated to remedy any defects covered by this exclusive limited warranty until Buyer notifies Manufacturer in writing of the defect and then only if such notification is made prior to the expiration of the warranty period.

Buyer agrees to properly install the Product and to use the Product under normal operating conditions in accordance with applicable instructions and specifications published by Manufacturer and the original manufacturers of the components of the Product (copies of which are included with the Product or can be obtained from the Manufacturer). Buyer acknowledges and agrees that the Product is not intended for use in connection with any hazardous activity or other activity where failure of a single component could cause substantial harm to persons or property.

Manufacturer denies and disclaims all liability for any loss, cost, damage or injury and any warranty provided pursuant to this exclusive limited warranty is rendered null and void if the Product is: (1) used for an improper or hazardous purpose; (2) improperly installed; (3) used for a purpose for which it is not designed or intended; (4) modified, repaired or altered without Manufacturer’s written consent; or (5) subjected to misuse, neglect, abuse, negligence, accident or improper maintenance. Buyer further agrees to indemnify, defend and hold harmless Manufacturer against any such liability, and any loss, cost, damage, injury or expense, including any attorneys’ fees and expenses, suffered or incurred by Manufacturer related to such conduct which voids this warranty, whether as a result of breach of contract, warranty, tort (including negligence), or otherwise.

THIS EXCLUSIVE LIMITED WARRANTY IS IN LIEU OF AND MANUFACTURER EXPRESSLY DISCLAIMS AND EXCLUDES ANY OTHER WARRANTY, EXPRESS OR IMPLIED, STATUTORY, AT LAW OR IN EQUITY, INCLUDING (BUT NOT LIMITED TO) ANY IMPLIED WARRANTIES OF MERCHANTABILITY AND/OR FITNESS FOR A PARTICULAR USE OR PURPOSE, AND BUYER HEREBY WAIVES ANY AND ALL SUCH WARRANTIES. IN NO EVENT, WHETHER AS A RESULT OF BREACH OF CONTRACT, WARRANTY, TORT (INCLUDING NEGLIGENCE), OR OTHERWISE, SHALL MANUFACTURER BE LIABLE FOR ANY SPECIAL, CONSEQUENTIAL, INCIDENTAL OR PUNITIVE DAMAGES, WHETHER FORESEEN OR FORESEEABLE, INCLUDING BUT NOT LIMITED TO LOSS OF PROFITS OR REVENUES, LOSS OF USE OF THE PRODUCT OR LOSS OF USE OF ANY ASSOCIATED EQUIPMENT, COST OF SUBSTITUTE PRODUCTS, COST OF FACILITIES OR SERVICES, COST OF REPLACEMENT POWER, DOWN TIME COSTS, OR CLAIMS OF THIRD PERSONS WHO BUY FROM OR DEAL WITH BUYER FOR ANY SUCH DAMAGES DESCRIBED HEREIN. WITHOUT LIMITING THE FOREGOING, THE MAXIMUM LIABILITY, IF ANY, OF MANUFACTURER FROM ANY CAUSE WHATSOEVER SHALL NEVER EXCEED THE ORIGINAL COST OF THE DEFECTIVE PRODUCT SOLD.

This exclusive limited warranty has been agreed upon by Buyer through either a direct contractual relationship with the Manufacturer or an assignment and assumption of this exclusive limited warranty from Manufacturer’s distributor or third-party contractor. No actions taken by Manufacturer to correct defects shall extend the warranty period. No representative of Manufacturer (or anyone else) has the authority to expand the scope or extend the duration of this exclusive limited warranty or to make agreements with respect hereto.

All written notices or returns to Manufacturer must be delivered to: Powertron®: Corporate Headquarters, P.O. Box 160, Nokomis, Illinois, 62075; Fax Number 217-563-8336. Customer service is available at 1-800-221-7665 or 217-563-8333 or at www.powertronsolutions.com. In order to obtain warranty service, the Product or its defective components must be returned to the Manufacturer. A Return Material Authorization (“RMA”) number is required for every return shipment to Manufacturer. An RMA number can be obtained by contacting a Powertron® Sales & Service representative at 1-800-221-7665 or 217-563-8333. Returned Products are refused unless a RMA number accompanies the shipment. In no event shall Manufacturer be liable for installation, removal or re-installation costs. To the extent any removal and installation of a Product or its components is required, such removal or installation must be handled by a professional and/or fully licensed electrician. ALL WARRANTY CLAIMS ARE VOIDED IF the Product was damaged during transport as a result of improper packaging.

This exclusive limited warranty shall be governed by and construed in accordance with the laws of the State of Illinois, USA and any disputes hereunder or relating hereto shall be subject to the jurisdiction of the courts in Nokomis, Illinois, USA.

POWERTRON®

P.O. Box 160

Nokomis, Illinois, 62075

800.221.7665

www.powertronsolutions.com

PART #: TBQCB-1020-E4616-MAN