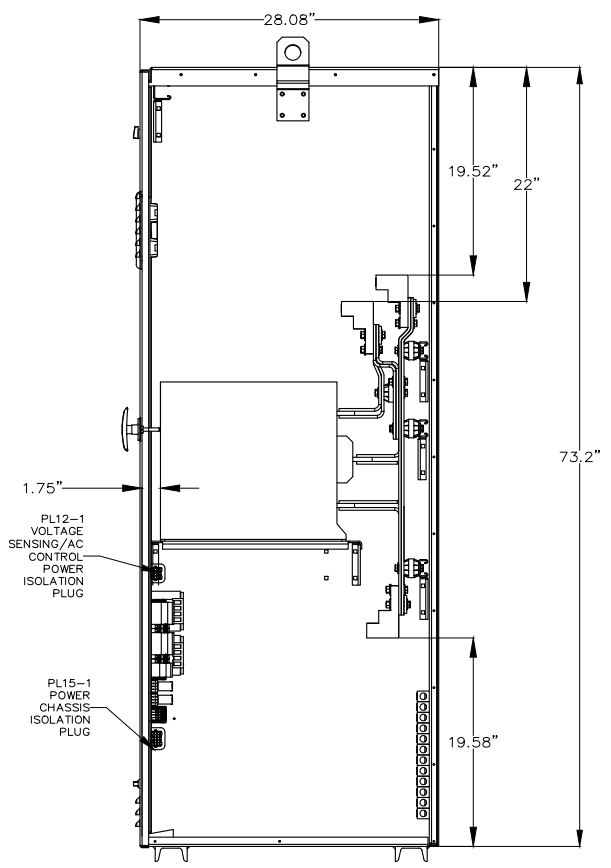
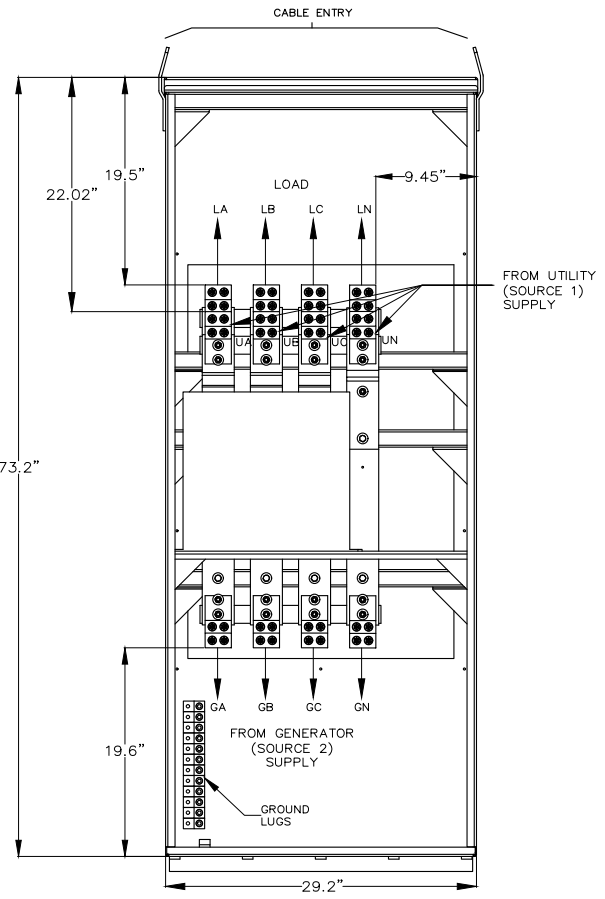


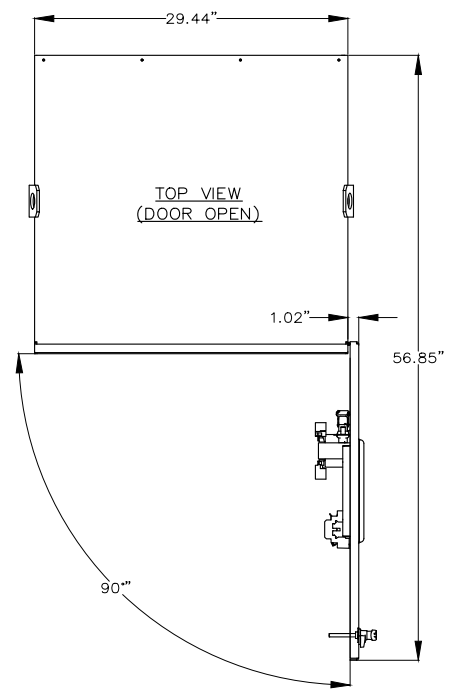
FRONT VIEW



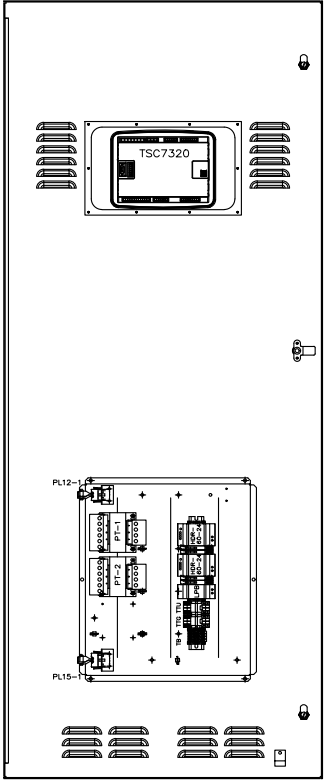
RIGHT SIDE VIEW  
(SIDE SHEET REMOVED)



INTERIOR FRONT VIEW  
(DOOR NOT SHOWN)



TOP VIEW  
(DOOR OPEN)



VIEWED FROM REAR  
(INSIDE) OF DOOR

CONNECTION DATA	
UTILITY (SRC1)	1-4C, #4-600MCM Cu/Al PER PHASE & NEUTRAL
GENERATOR (SRC2)	1-4C, #4-600MCM Cu/Al PER PHASE
LOAD	1-4C, #4-600MCM Cu/Al PER PHASE
NEUTRAL	1-4C, #4-600MCM Cu/Al PER SOURCE
GROUND	12C, #6-250MCM Cu/Al

GENERAL NOTES	
1	NEMA 12 / NEMA 3R SD ENCLOSURE C/W GASKETING
2	FOR 1 PHASE, 3 WIRE SOLID NEUTRAL APPLICATION, CONNECT PHASE TO 'A' & 'B'. OMIT 'C'
3	FOR 1 PHASE, 3 WIRE SWITCHED NEUTRAL APPLICATION, CONNECT PHASE TO 'A' & 'B'. CONNECT NEUTRAL TO 'C'
4	REFER COVER PAGE / SELECTED OPTION LIST FOR PROJECT SPECIFIC DETAILS

2.5" x 5"

**⚠ DANGER PELIGRO**

**Arc Flash and Shock Hazard**  
Will cause severe injury or death. More than one live circuit - see diagram. Disconnect all sources of supply before servicing. This equipment must be installed and serviced only by qualified electrical personnel utilizing safe work practices and appropriate Personal Protective Equipment (PPE). Failure to comply may result in injury or death. Refer to NFPA 70E for minimum PPE requirements.

**Risque d'Arc Electrique et d'Electrocution**  
Peut causer des blessures graves ou la mort. Plus d'un circuit sous tension - voir schéma. Couper toutes les sources d'alimentation avant de faire l'entretien et les réparations. Ce matériel doit être installé et entretenu uniquement par un électricien qualifié. Ce dernier doit connaître les pratiques de travail sécuritaires et porter l'équipement de protection individuelle approprié. Le non respect peut entraîner des blessures ou la mort. Reportez-vous à NFPA 70E pour le manuel des exigences minimales PPE.

**Riesgo de Arco y Choque Eléctrico**  
Se causarán lesiones graves o muerte. Más de un circuito energizado - ver diagrama. Desconectar todas las fuentes de suministro antes de hacer mantenimiento. Este equipo solo se debe instalar y mantener por personal calificado, usando medidas de seguridad y equipo de protección personal adecuados. No seguir estas recomendaciones puede causar lesiones o la muerte. Reporte-los a NFPA 70E para los requisitos mínimos del equipo de protección personal (PPE)

QTY = 1

APPROVED FOR CONSTRUCTION  
 MASTER COPY  REFERENCE COPY OF \_\_\_\_\_  
 MULTIPLE UNIT WORK ORDER  
 RELEASED FOR INFORMATION  
 AUTH. BY: \_\_\_\_\_ DATE: \_\_\_\_\_

CROSS REFERENCE LEGEND  
 50C-C-1  
 GRID COORDINATE  
 SHEET No. \_\_\_\_\_

DRAWING No.	REFERENCE DRAWINGS	No.	REVISIONS	BY	AUTH	DATE



**AUTOMATIC TRANSFER SWITCH  
 MODEL TS 970  
 PHYSICAL LAYOUT & INSTALLATION DETAILS  
 1200A, 3P, NEMA 1/2/12/3R SD, PCS ATS, STD**

FOR REVIEW ONLY

DRAWINGS AND/OR OTHER TECHNICAL INFORMATION SUPPLIED BY THOMSON POWER SYSTEMS AS A PART OF A SALE OF EQUIPMENT ARE FOR THE PURCHASER'S USE SOLELY IN CONJUNCTION WITH THAT EQUIPMENT, UNLESS SPECIFICALLY AGREED TO OTHERWISE AS A PART OF THE TERMS OF SALE.

CUSTOMER THOMSON POWER SYSTEMS	
CUSTOMER ORDER No. C-XXXXXX	WORK ORDER No. W-XXXXXX
DRAWN BY SK	AUTH BY OG
DATE 22-11-08	REV 0
DRAWING/FILE No. PCS970M308	SHEET 10A